



The Ins and Outs of Fabrication Ancillaries

Scott Hendricks
Fabrication Specialist

Class summary

We will cover how to build and use Autodesk Fabrication ancillaries.

Key learning objectives

At the end of this class, you will be able to:

- Have a better understanding of what ancillaries are and how we can use them
- Know how to build your own Fabrication ancillaries
- Know all the locations the ancillaries can be applied and how to apply them to your Fabrication items
- Report ancillaries for procurement

What are ancillaries?

ancillary

adjective | an·cil·lary | \ˈan(t)-sə-ˌlɛr-ē, -ˌle-rē, especially British an-ˈsi-lə-rē\

Simple Definition of ANCILLARY

Popularity: Top 1% of lookups

: providing something additional to a main part or function

Source: Merriam-Webster's Learner's Dictionary

How can we use ancillaries?

Estimating

Item LD20003 - Butterfly valve Lever Lock (LUG) - 2 (4'') [x 1]

- Material Costs = \$382.86 per Qty
 - Price List Cost = \$359.50 per Qty (Harrison: Harrison List Prices)
 - Ancillary Cost = \$23.36 per Qty
 - Ancillary Cost = \$23.36 per Qty
 - Kit (Nibco 1000/2000/3000 Series Lug Butterfly valve) x 2 = \$23.36 per Qty
 - Clips: 5/8" Plain Flat washer [ENC_90000034] x 8 = \$2.80 per Qty
 - Fixings: 5/8-11 x 1.75 Hex Head Cap Screw [ASTI_90000073] x 8 = \$8.88 per Qty
 - Insulation Cost = \$0.00 per Qty
 - Total = \$382.86 per Qty
- + Fabrication Cost = \$0.00 per Qty
- + Installation Cost = \$0.00 per Qty
- Total Unit Cost = \$382.86 per Qty
- Gross Unit Cost = \$382.86 per Qty (@ 0% Total)
- Gross Item Extn = \$382.86 Total

Close

How can we use ancillaries?

Procurement

Applied Software [®]		Ancillary List			11/13/2016
2801 Buford Hwy NE, Atlanta, GA 30329 (800) 899-2784					Untitled2 Est No: 0 Reference:
Qty	Size	Type	Name	Length	
16	5/8"	Clips	5/8" Plain Flat Washer		
16	5/8-11 x 1.75	Fixings	5/8-11 x 1.75 Hex Head Cap Screw		

Steps to building ancillaries?

Step 1 - Add an entry in the Product Information Editor

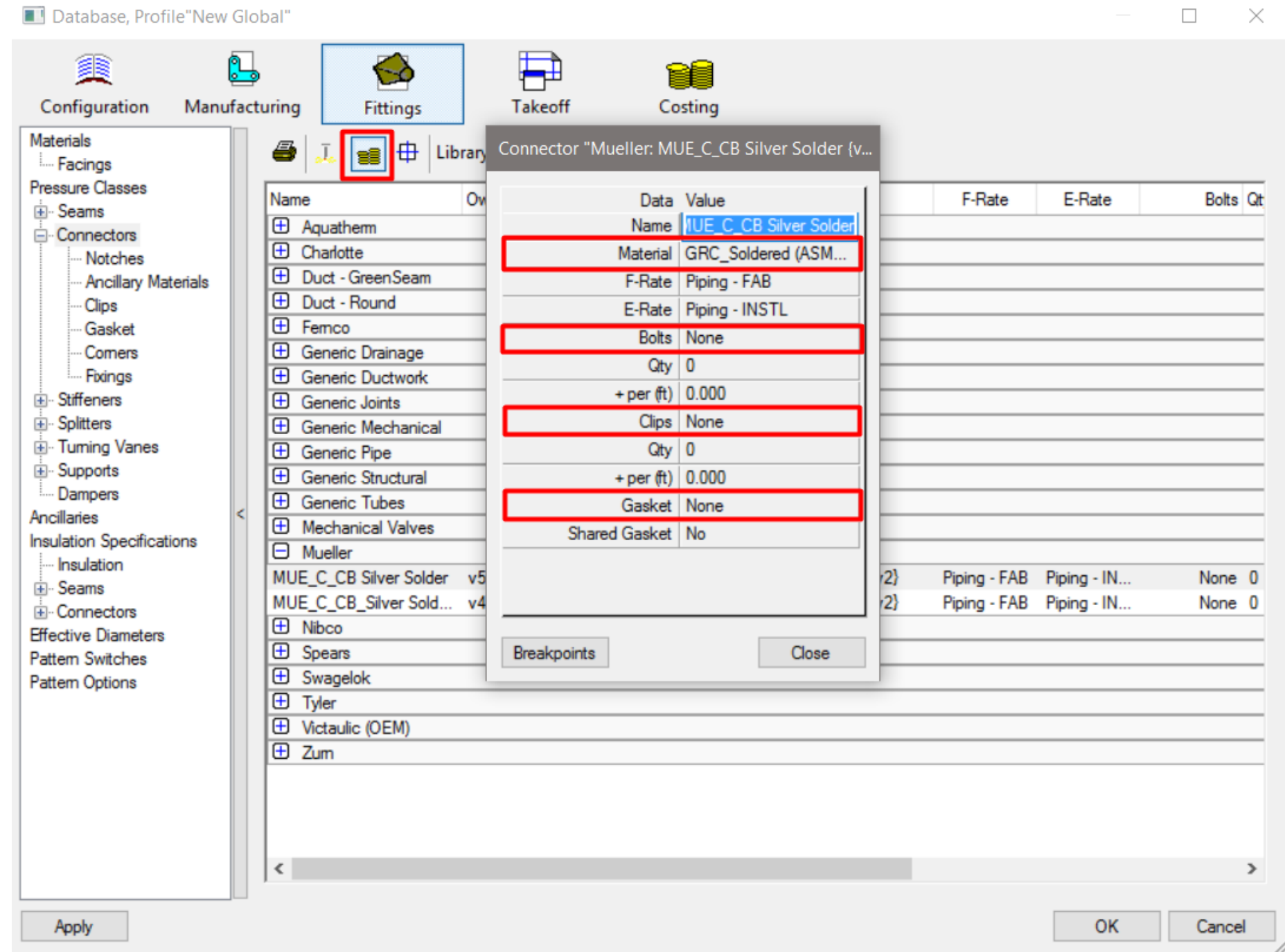
Step 2 - Add the cost in a pricing table

Step 3 - If install labor is required, add the labor to an install table

Step 4 - Make the ancillary

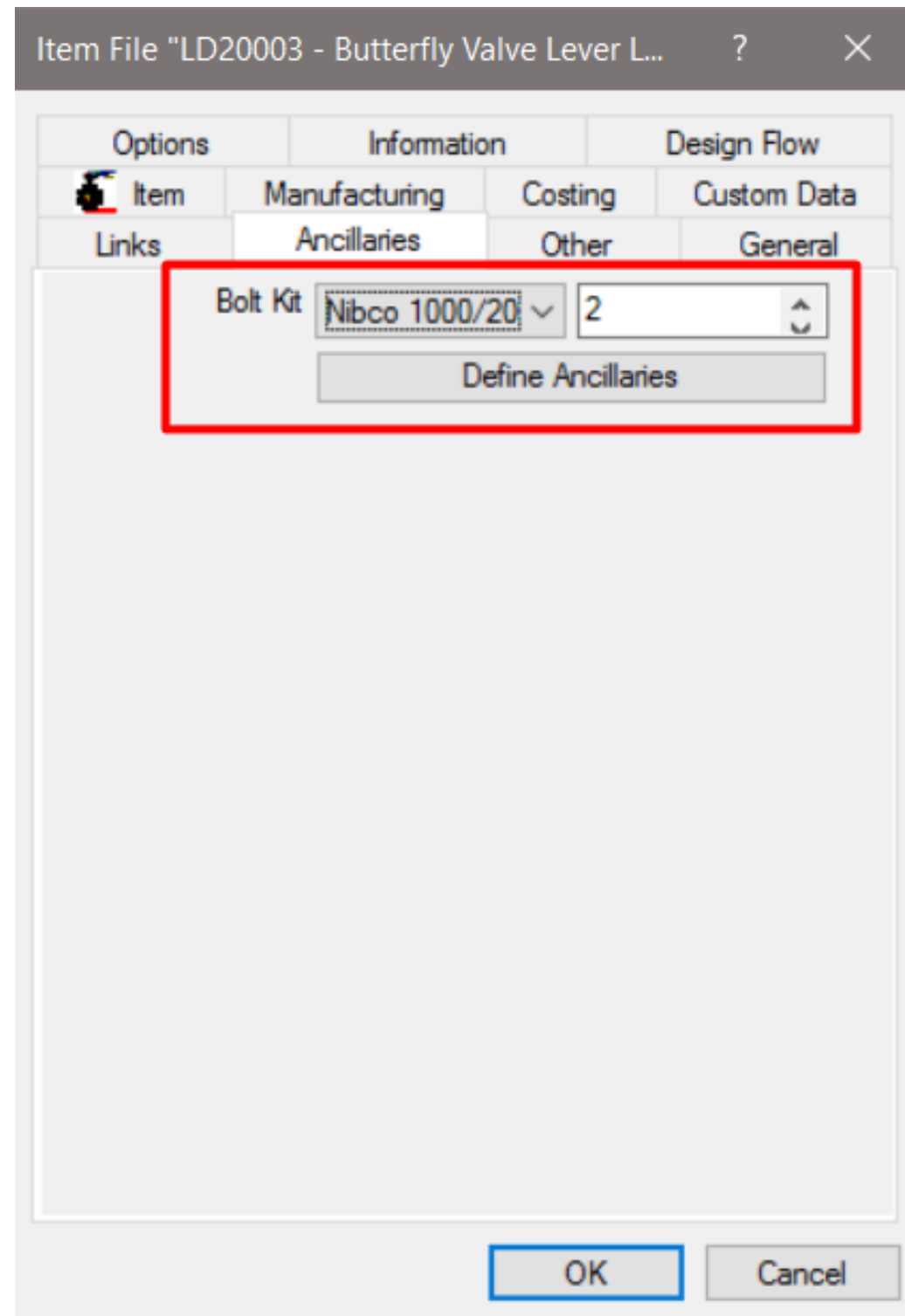
Attaching ancillaries to Fabrication items.

- Seams
- Connectors
- Stiffeners
- Splitters
- Vanes
- Supports

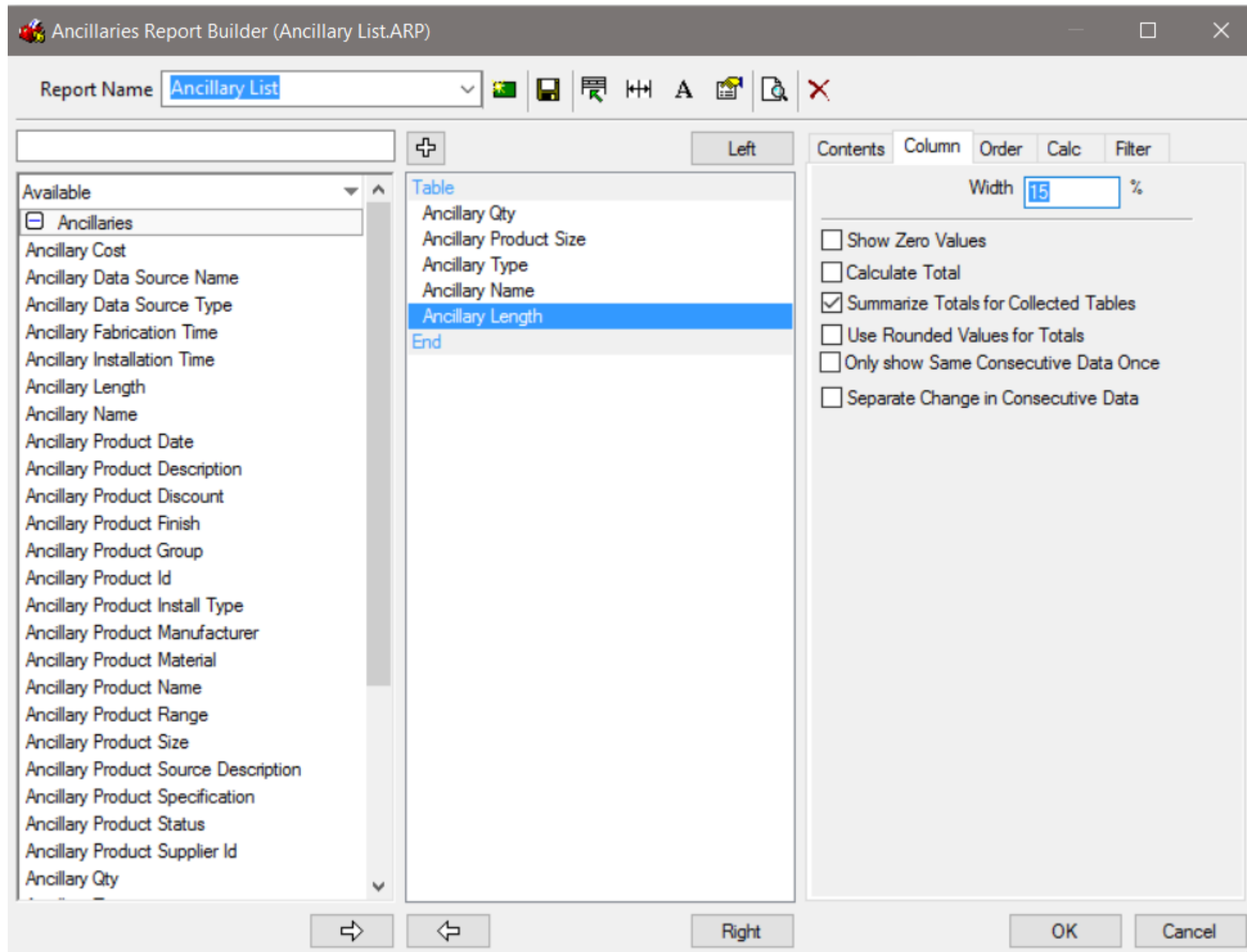


Attaching ancillaries to Fabrication items.

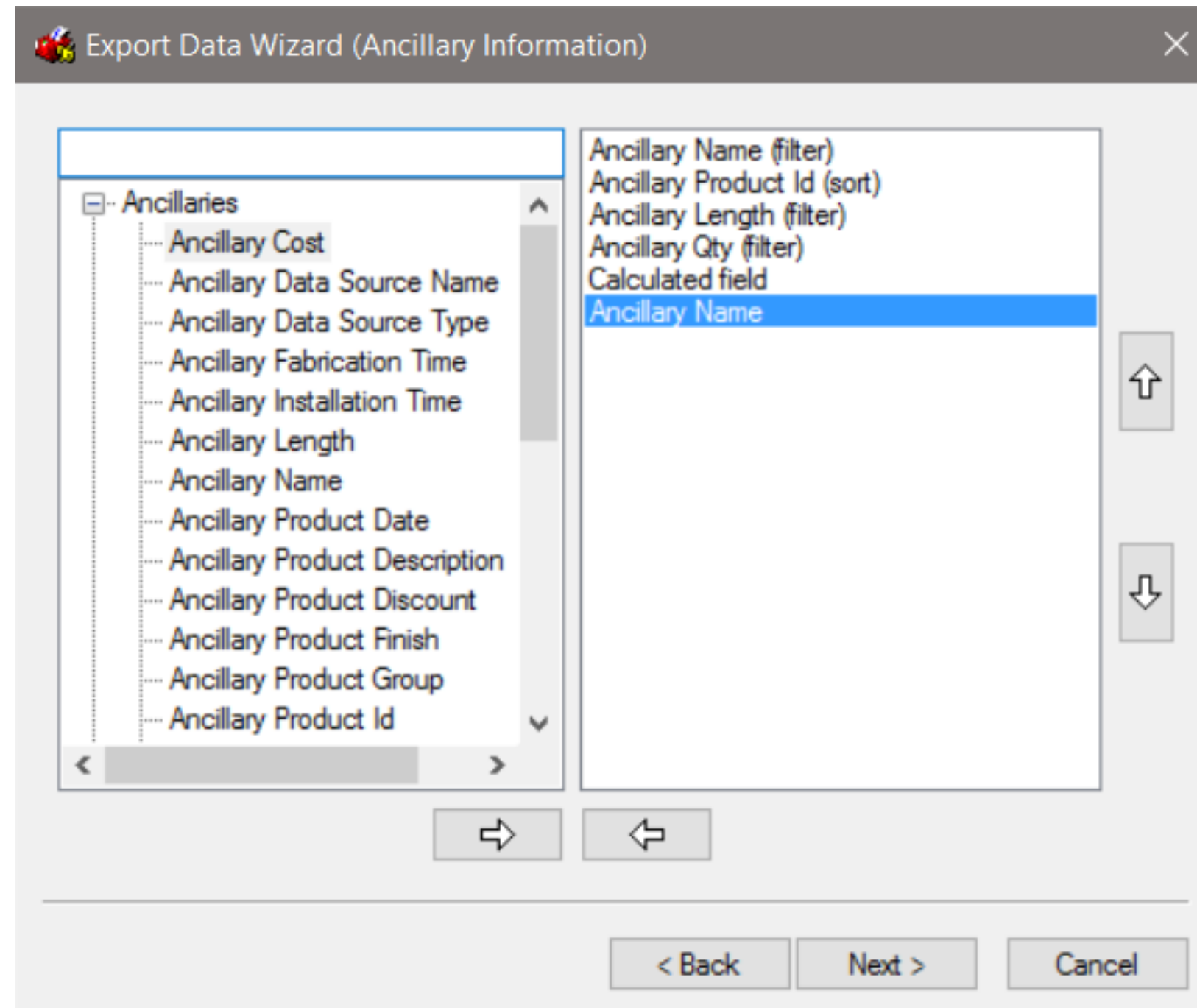
- Items



Reports



Exports



How did I do?

- Your class feedback is critical. Fill out a **class survey** now.
- Use the AU mobile app or fill out a class survey online.
- Give feedback after each session.
- AU speakers will get feedback in real-time.
- **Your feedback results in better classes and a better AU experience.**



