

All Natural Autodesk Vault Enhancements

Irvin Hayes Jr.
Product Manager

Robert Stein
Technical Consultant

Class summary

Do you have a check-in that lasts more than 4 hours? Trouble reaching peak performance in your Autodesk Vault software environment? Do you want to manage files all day long? Not as excited about files as you wish to be? Then this class is for you. Learn how to make check-ins complete as fast as possible. Learn how to keep your environment operating at its peak and ready to perform when it needs to.

Key learning objectives

At the end of this class, you will be able to:

- List and describe the different hardware configurations
- Find and use the Vault tools to monitor and maintain performance
- Make adjustments to make Vault perform better
- Assess and determine when to scale your environment

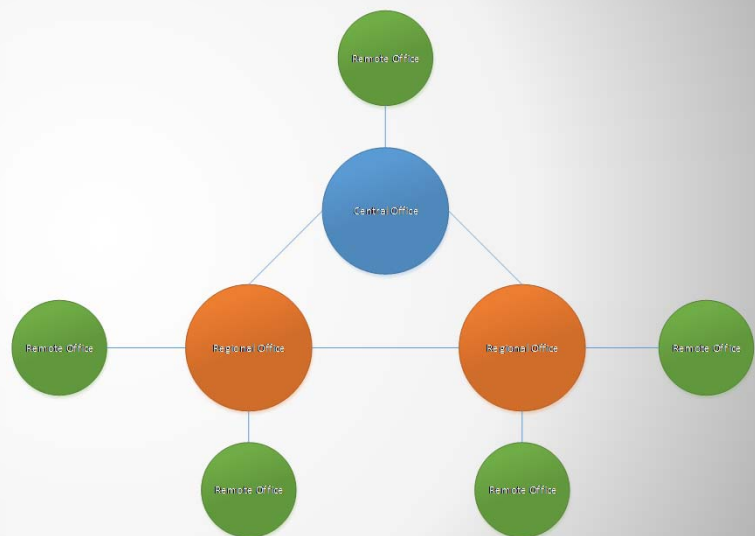
“Silence is more musical than any song.”

Christina Rossetti

Environments

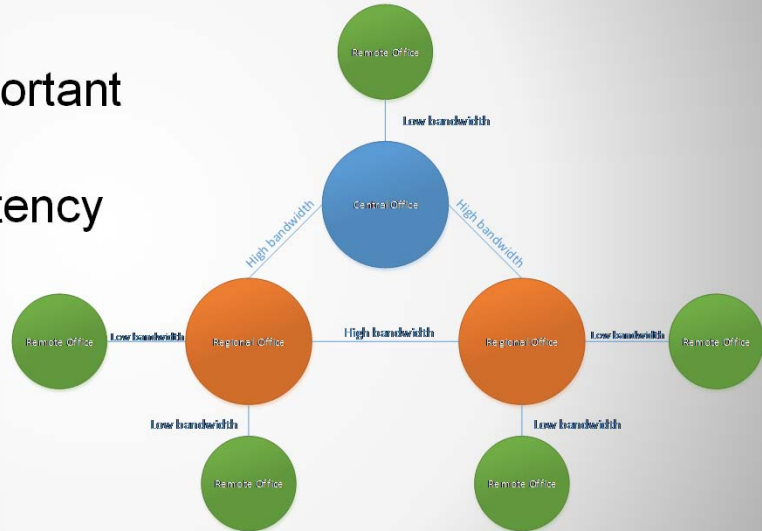
Environments

- No one-size-fits-all
- Documentation is important
- Remote Offices



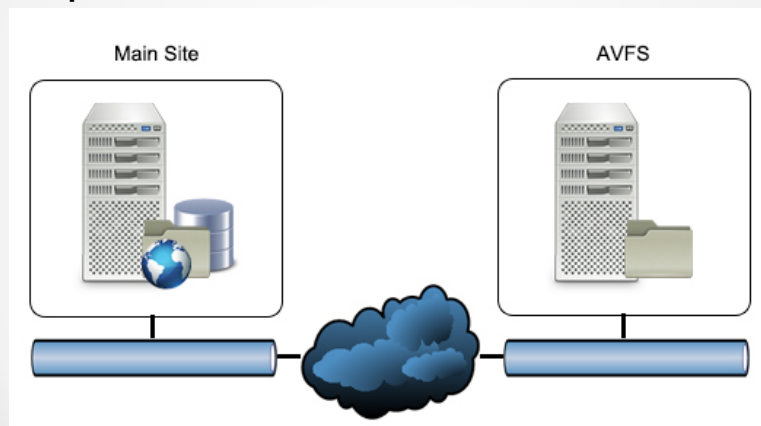
Environments

- No one-size-fits-all
- Documentation is important
- Remote Offices
- Note Bandwidth & Latency



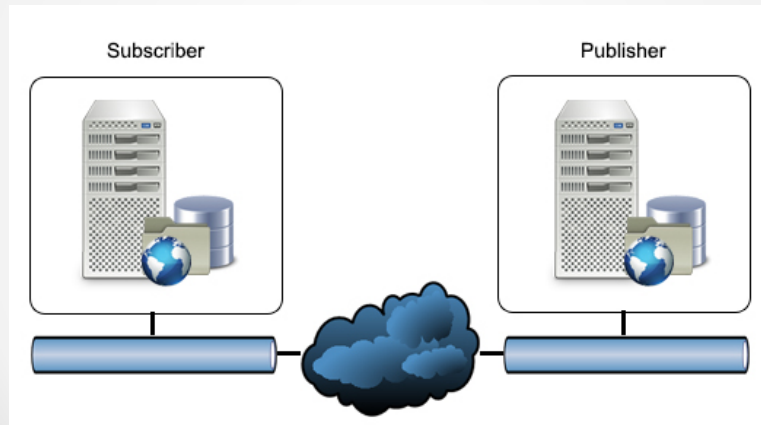
File Replication

- Files are replicated



Full Replication

- Files and databases are replicated



Vault Components

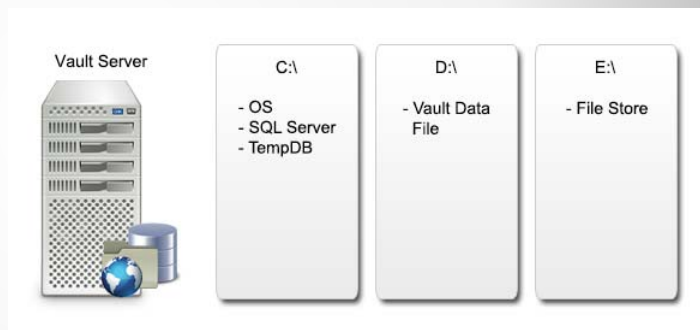
- Autodesk Vault Server
- Internet Information Services (IIS)
- Microsoft SQL Server
- File store



Software Configuration

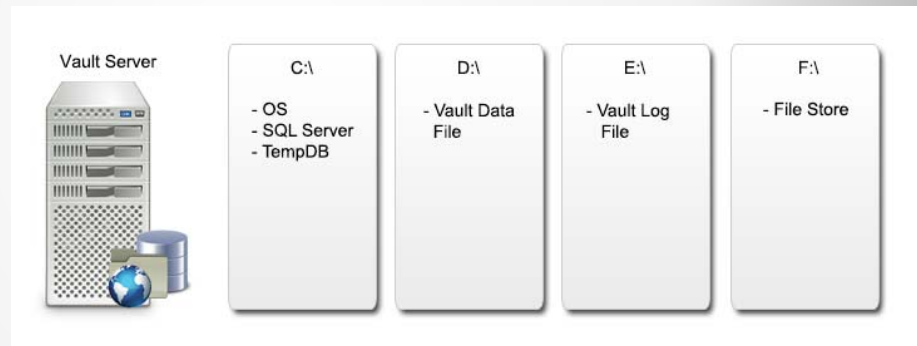
Multiple Drives

- Increase performance by splitting up I/O request



Splitting Database Files

- Split MDF & LDF files
- Performance for I/O request



Splitting Servers



Test Environment

- Similar CPU, memory and disk space
- Operating system, service packs/updates & settings
- Same SQL Server edition & updates
- Other application

Tools & Documentation

Documentation

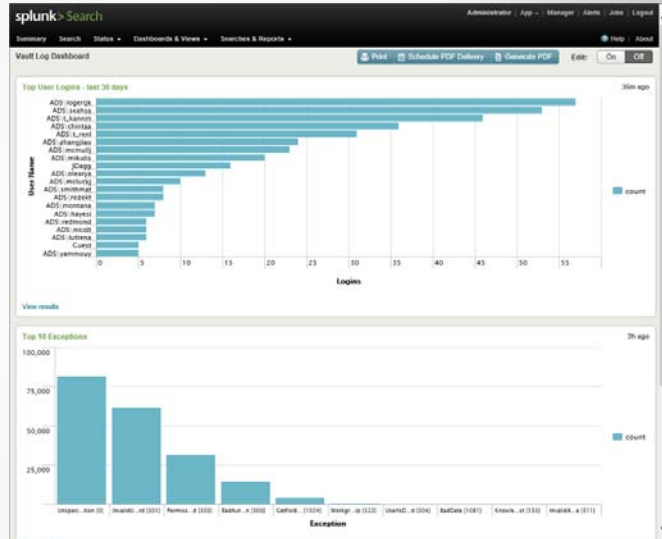
- Server Information
 - Hardware
 - Server configuration
- Vault Information
 - Install information
 - SQL information
 - IIS information
- Replication
 - Replication setup

Monitoring Tools

- SQL Database Mail
 - Email alerts
 - [Monitoring Replication with Replication Monitor](#)
 - [Setting Thresholds and Warnings in Replication Monitor](#)
 - [How to: Set Thresholds and Warnings for Merge Publication](#)
 - [Monitoring Performance with Replication Monitor](#)
- SQL Replication Monitor
 - Dialog display

Splunk

- Data Analytics
- Log file indexing
- Email alerts



Turning the Dials

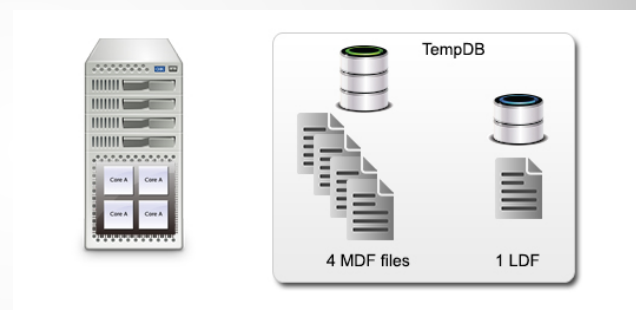
SQL Database Growth

- Performance effected during growth
- Set growth size to 500MB



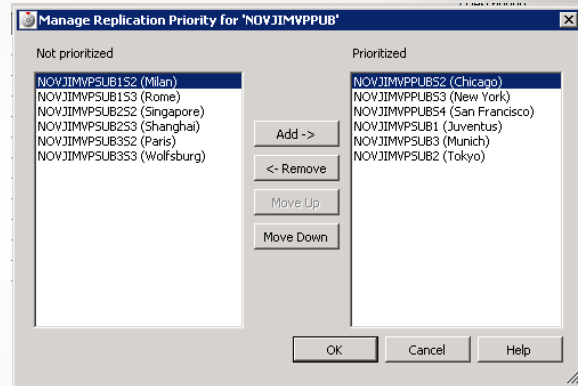
Multiple TempDB Data Files

- Used for temporary transactions
- One file by default
- One file per CPU core



Replication Priority

- Replication randomized
- Not prioritized by default
- Prioritize based on connections





Autodesk is a registered trademark of Autodesk, Inc., and/or its subsidiaries and/or affiliates in the USA and/or other countries. All other brand names, product names, or trademarks belong to their respective holders. Autodesk reserves the right to alter product offerings, specifications and pricing at any time without notice, and is not responsible for typographical or graphical errors that may appear in this document. © 2013 Autodesk, Inc. All rights reserved.

