



# AC6496 A Tribute to Attributes - Adding Intelligence to Your Drawings

Volker Cocco

Product Support Specialist

## Before We Begin

- Please silence cell phones
- If this class isn't right, feel free to attend a different class
- Class will be recorded
- Download the handout and dataset
- Check out the AutoCAD Help Webinars
  - [Build Your AutoCAD IQ!](#)
  - Free Webinar Series Hosted by Autodesk Product Support
  - Exhibit Hall, Booth #147
  - Held weekly

# Key learning objectives

At the end of this class, you will have an understanding of:

- How to define block attributes
- How to redefine (update) block attributes
- How to extract attributes to a table or an external file
- How-to's "attribute tips and tricks"

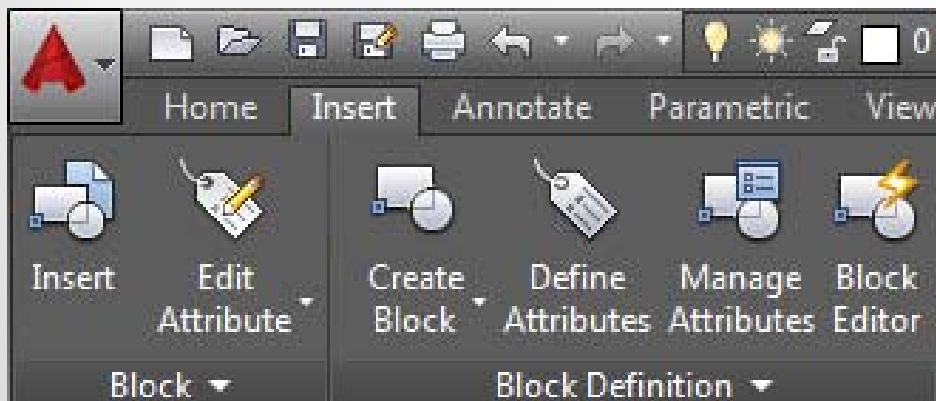
# About Attributes

An attribute is a label or tag that attaches data to a block.

- Can be made into a stand alone block, i.e., a label block
- Common attribute use is in title blocks
- Examples attribute data are part numbers, prices, comments, and owners' names, etc.
- Enforce consistency
- Attribute data can be extracted to a Table or external file
  - Schedule
  - Bill of Materials

# About Defining Attributes

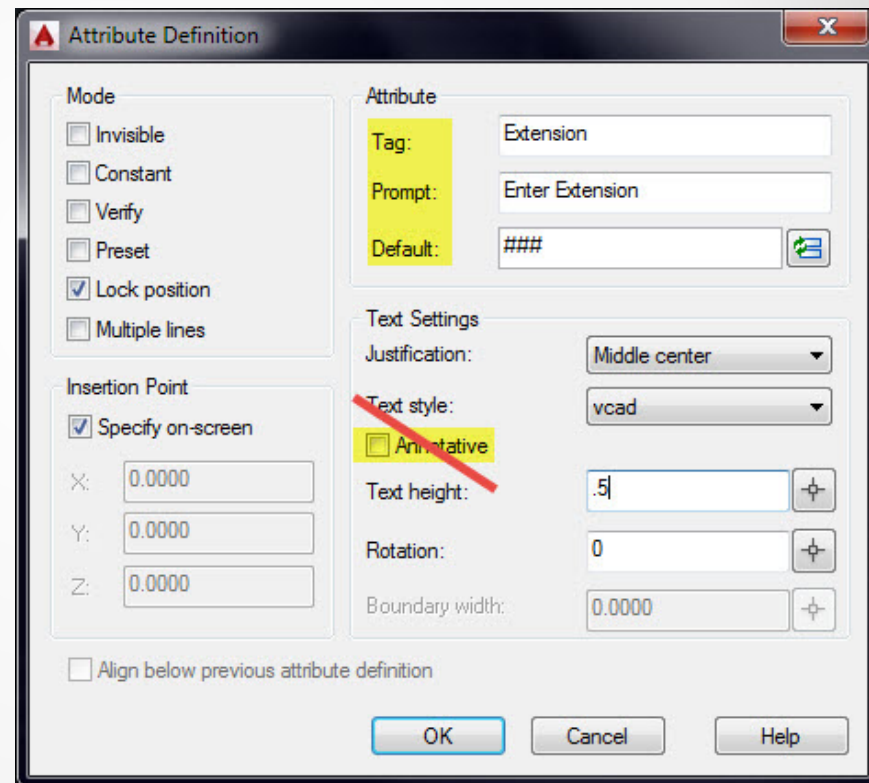
- Attributes are defined using the Attribute Definition dialog
- Attached to a block or as a stand alone block
- Commands: **ATTDEF** or **AT**



# About Defining Attributes

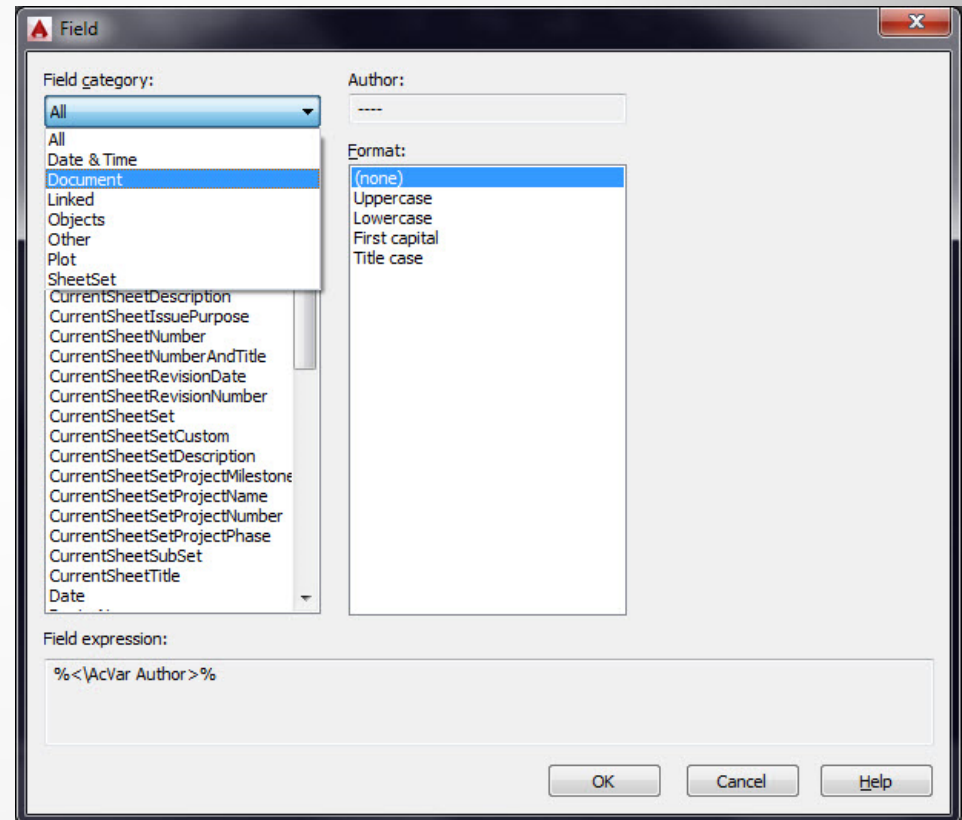
There are three primary components to an attribute definition:

- A unique tag
- A prompt
- A default value



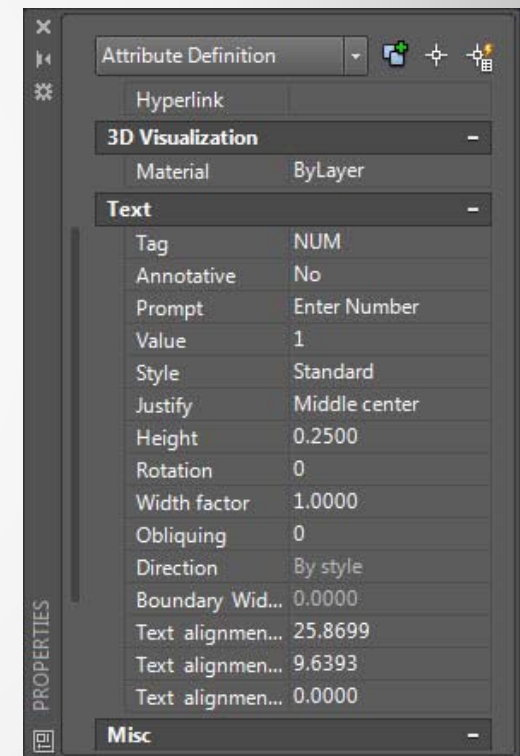
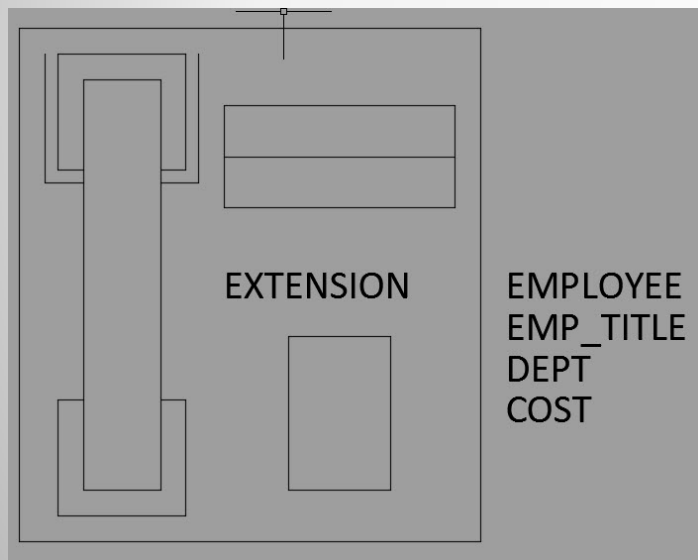
# Defining an Attribute with Fields

- Attribute Text is Static
- Use Fields to Define Dynamic Attributes
  - Drawing Properties (DWGPROPS)
  - Area
  - Location
  - More...



# About Defining Attributes

- Define the Attributes
- Modify the Attribute using Properties (if necessary)
- Define the Attributed Block using the Block command





# Inserting Attributed Blocks

## Commands

- INSERT – Inserts Attributed Block
- ATTDISP – Controls Visibility
  - Normal (Default)
  - Off
  - On

## System Variables (toggles how a command works)

- ATTDIA – Controls Display of Prompts via Dialog or CLI
  - 0
  - 1 (Default)
- ATTREQ – Controls Display of Prompts
  - 0
  - 1 (Default)

# Editing Attributes

- **Single Modification**
  - Properties Palette
  - ATTEDIT – Edit Attributes Dialog (Same as Insert Attribute dialog)
  - EATTEDIT – Enhanced Attribute Editor (Double-Click default)
- **Global Modification**
  - BATTMAN – Block Attribute Manager
  - BEDIT – Block Editor
    - ATTSYNC – Synchronize Attributes

# About Extracting Attribute Data

- **EATTEXT** (Command) or Data Extraction Wizard
- Extracts Property Data from Selected Objects
- Extract to a Table
- Extract to External File
  - XLS, CSV, MDB, TXT
- Creates a template (DXE file) for reuse
- Not available in AutoCAD LT

## Session Feedback

- Via the Survey Stations, email or mobile device
- AU 2015 passes given out each day!
- Best to do it right after the session
- Instructors see results in real-time



*Students, educators, and schools* now have

**FREE** access to Autodesk design software & apps.

Download at [www.autodesk.com/education](http://www.autodesk.com/education)



**Earn your professional Autodesk Certification at AU**

Visit the [AU Certification Lab](#)

