

OG121500

Collaborate with AutoCAD Plant 3D and BIM 360 Team

Carsten Beinecke
CAD STUDIO ABCOM GMBH

Learning Objectives

- Learn how to bring your AutoCAD Plant 3D project into the cloud
- Learn how to check DWGs in/out
- Learn about the workflow with BIM 360 Team
- Learn about limitations

Description

This class will show how you can share AutoCAD Plant 3D software with BIM 360 Team and Fusion Team (formerly A360 Team) to collaborate within your company or with your customer. We'll show how to bring your AutoCAD Plant 3D project into the cloud and how to work with the project through BIM 360 Team and Fusion Team.

Speaker(s)

Carsten Beinecke has worked in the plant industry for 29 years, starting as a drafter and becoming a supporter and developer for plant software.

As the author of books and training manuals for AutoCAD P&ID and AutoCAD Plant 3D, Carsten has helped numerous customers set up and customize these software systems.

He has a very deep understanding of the database structure of AutoCAD P&ID and AutoCAD Plant 3D. He supports customers around the world.

Carsten is the Product Manager of PlantTools. He started with the development in 2008. PlantTools are apps for AutoCAD P&ID and AutoCAD Plant 3D.

Carsten is also an Expert Elite and helps customers with articles on the Autodesk Knowledge Network (AKN) and the AutoCAD P&ID and Plant 3D forum.

Intro

Instead of writing an extensive document which explains the workflow, I rather created a comprehensive video explaining step by step how you get started and how you use this collaboration feature. You will find a video link at the end of this document. The video may also be available on AU Online as additional class material later on.

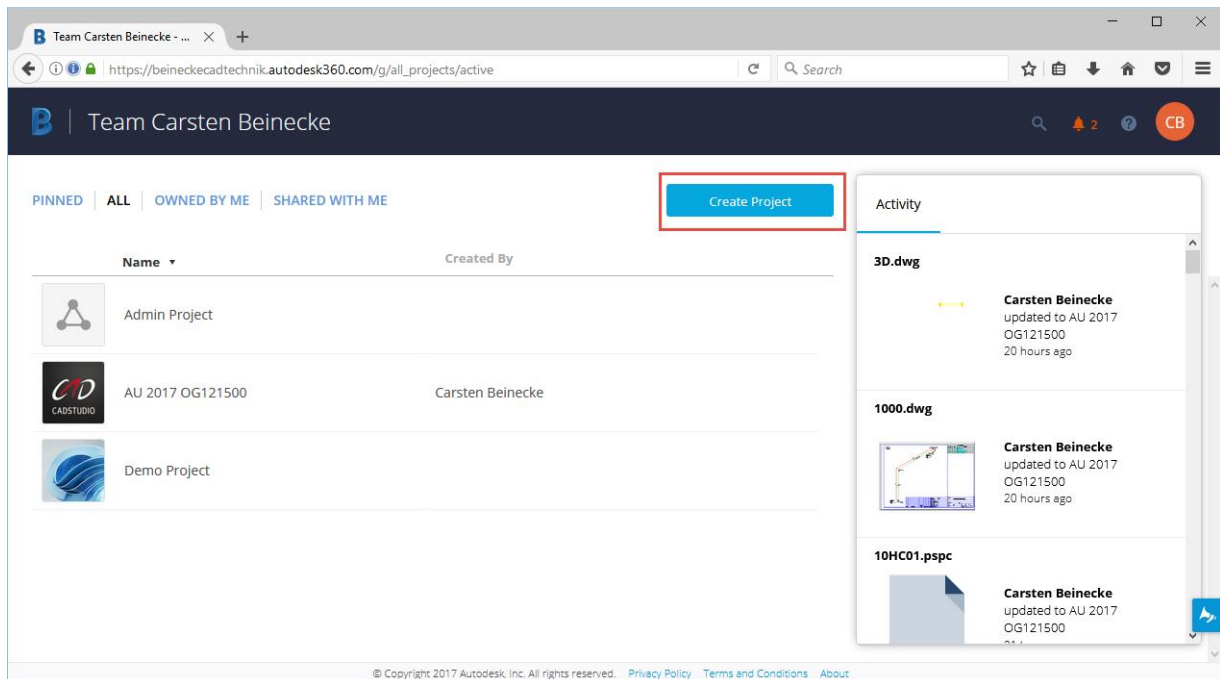
In addition, Autodesk allowed me to add the “*Project CALGARY Getting Started - Public Preview 2.pdf*” which they created during the beta phase of this collaboration feature of AutoCAD Plant 3D 2018.

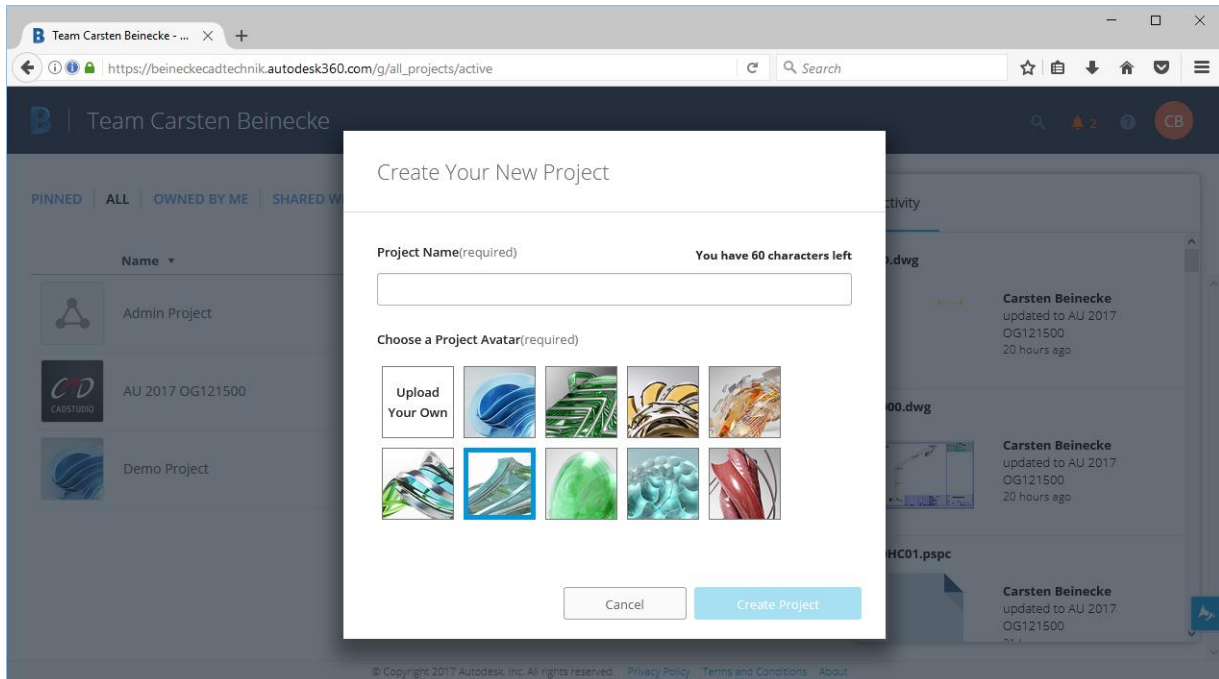
Workflow

Create a BIM 360 Project

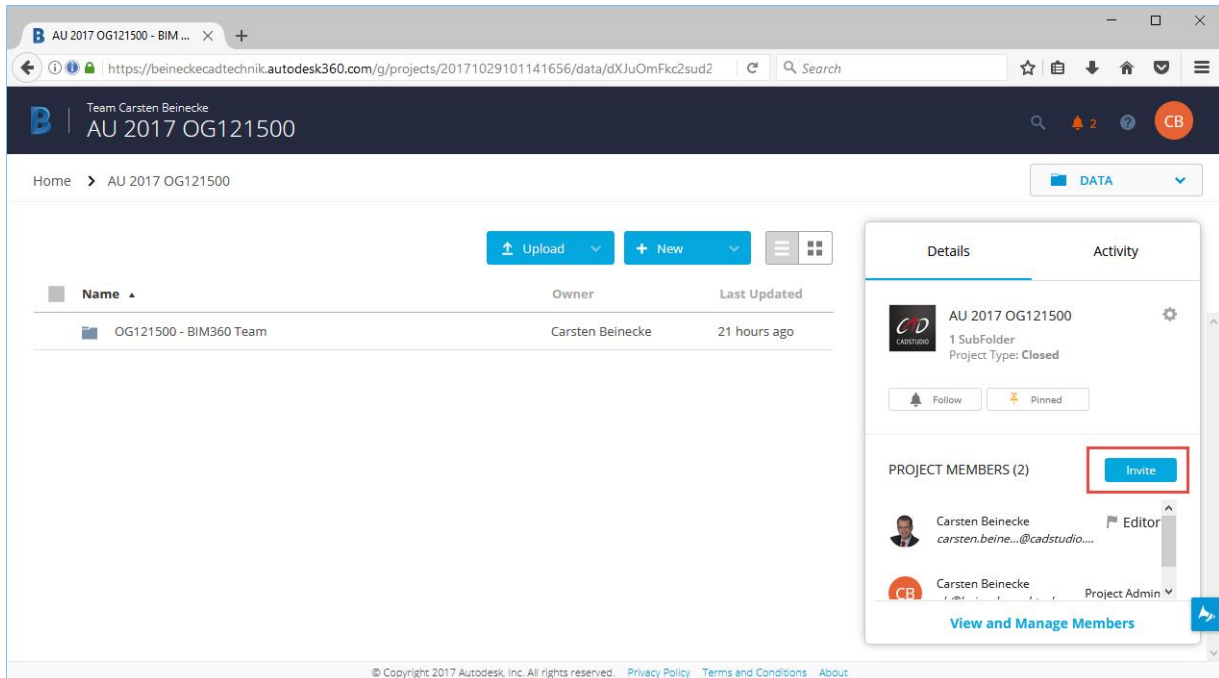
Before you can get started uploading your Plant project to the cloud, you need to create a project within BIM 360 Team. If you already have a project within BIM 360 Team you can skip this chapter.

Please be aware that a project in AutoCAD Plant 3D is not the same as a project in BIM 360 Team. The Plant project will later be located under your BIM 360 Team project.





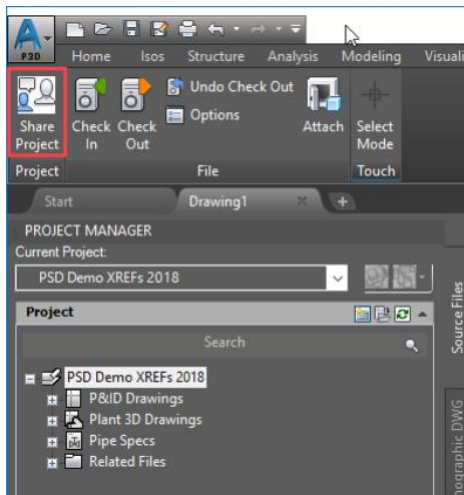
If you enter the BIM 360 Team Project you can now (or later) invite people to your project.



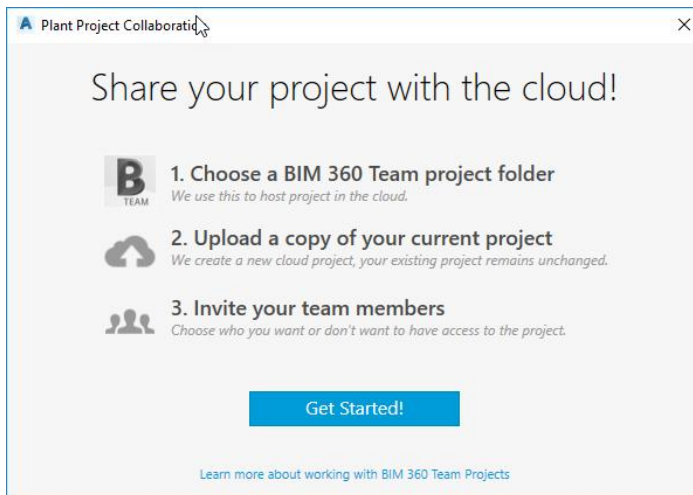
Upload your AutoCAD Plant 3D Project

Now you can upload your Plant project to the Cloud. Make sure you have your project open in Plant 3D 2018.

Access the “Collaboration” ribbon and click on “Share Project”.

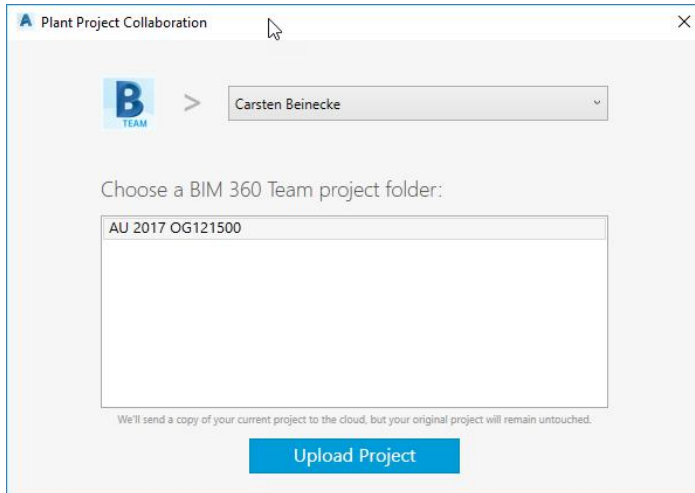


You will see this dialog.



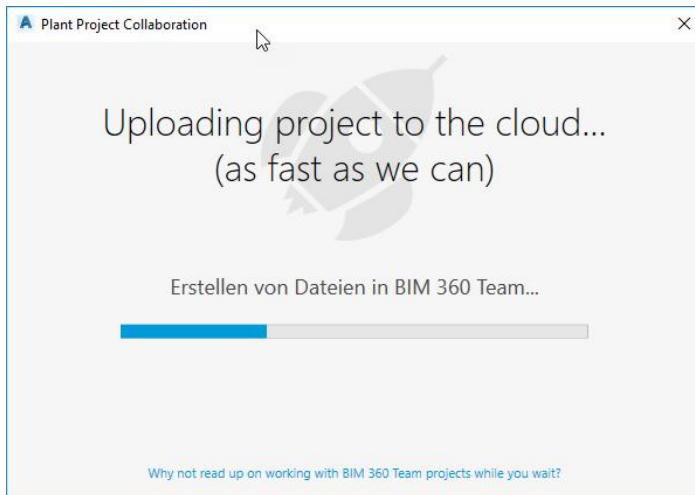
Click on “Get Started!”

You will see a list of all your available BIM 360 Team projects. Select the one you want and click on “Upload Project”.



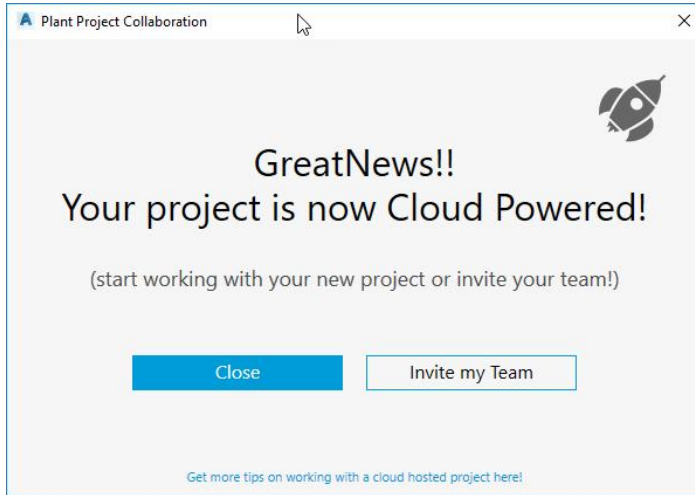
If there is any drawing open from your project, you will be notified that those drawings will be automatically closed.

Next you see the upload process of your files (sorry for the German text in the dialog).

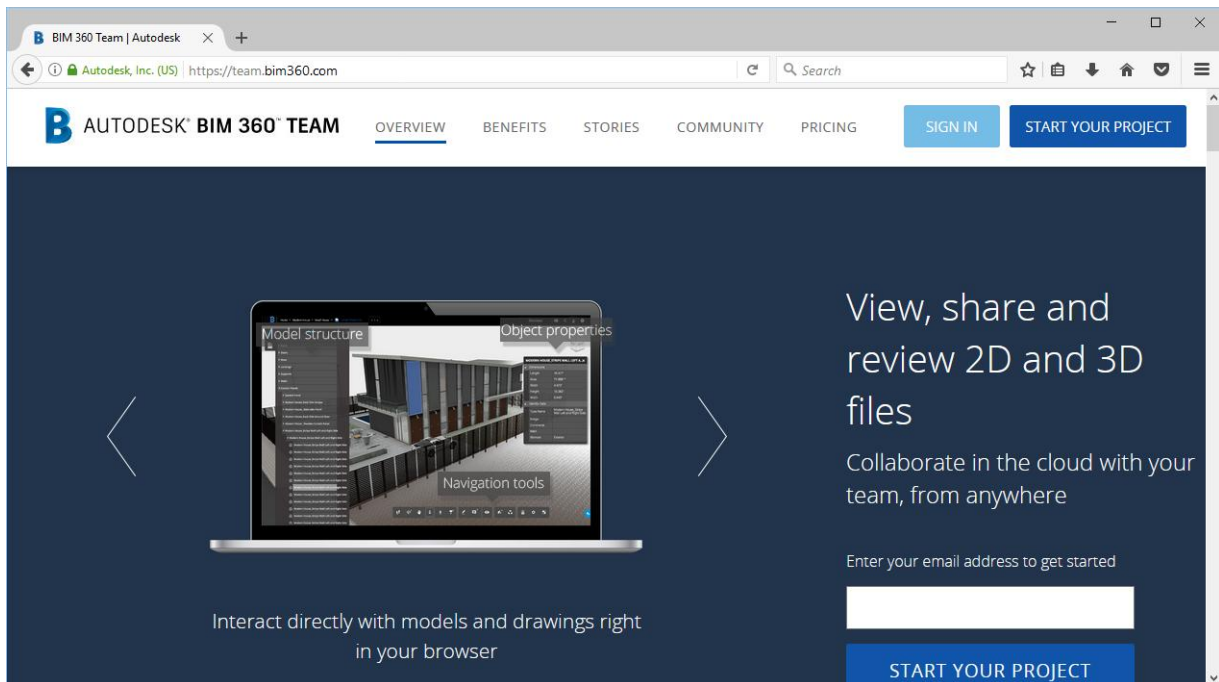


Share Project

If everything has been uploaded, you see the final dialog.



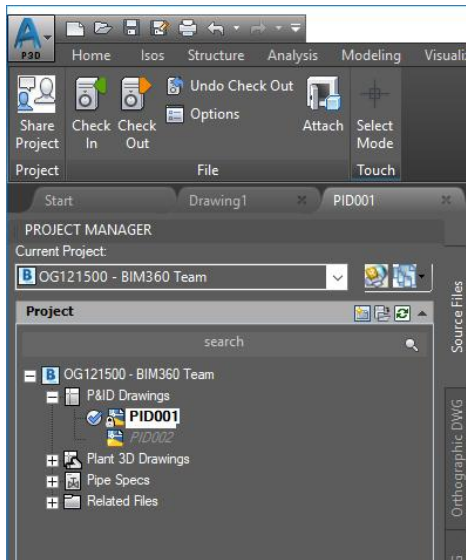
If you click on the "Invite my Team", you will be re-directed to:



Here you can login and invite others, but maybe you already did this when creating the BIM 360 Team project. Then you can skip this chapter.

Start working

Now you see you project coming from the Cloud and by double-clicking you can open it.



All the other workflows are explained in detail in the video link below.

Limitations

Right now, there are two main issues.

1. Speed

You work with a local copy of the cloud project. So, for starters the project files (except for the drawings) have to be downloaded. This may not take too long, but each drawing you want to view or edit, needs to be downloaded. This may not be much of a problem for P&ID drawings, but certainly for 3D. Also, all drawings you modify have to be uploaded again. And this will be even slower.

2. Tags

If you assign a Tag to an object, that Tag is stored only on your local machine. If a team member assigns a Tag at the same time, the same Tag can be used. Only if you check-in the drawing, the locally stored Tag will be uploaded to the cloud. If your team member now also checks-in his/her drawing he/she will get a notification that the Tag xxx is already in use and it was changed to xxx? So, your team member must edit the conflicting Tags again and check-in again. Hopefully there won't be a conflict again. In a bigger project with multiple people, this can be very annoying.



Additional Material

[AU2017 - OG121500 - 171029.mp4](#)

[Project CALGARY Getting Started - Public Preview 2.pdf](#)