

BLD319726

Airports: Asset Management Ownership Policies

Speakers

Dino Lustri, P.E., P.S., Special Projects Engineer
Cleveland Airport System

Brendan Dillon, Facilities & Infrastructure Manager
Denver International Airport

Nigel Stroud, Head of Information Management
Heathrow Airport

Lewis Watts, Business Consultant
Autodesk (Previously Gatwick Airport)

Eddy Krygiel, Major Projects Development Executive
Autodesk

Learning Objectives

- Compare your own environments to those of other airports and see examples of how others navigated similar obstacles
- Discover the ramifications of decisions made prematurely
- Develop strategies to address current and future obstacles
- Learn the differences between critical and parallel path requirements

Description

Undertaking the monumental effort of organizing data within an organization is difficult alone. Add standardization and, ultimately, the development of specifications to provide guidance to all who do business with your organization, and you really have a mountain to climb. Airports have unique requirements that set them apart from other asset management systems. During this panel discussion, we'll share the obstacles encountered from the conception of an asset management program all the way through to an enterprise-level BIM (Building Information Modeling), geographic information system (GIS), and computerized maintenance management system (CMMS). We'll share experiences on how these obstacles were handled both temporarily and permanently to achieve steps toward a single source of truth. Panel members will offer their unique perspectives on the various issues confronted through the implementation of these programs.

Speaker(s)

Dino Lustri, P.E., P.S. is a consulting water resources engineer and surveyor. Dino has extensive experience in information technology. His professional experience includes hydrologic and hydraulic modeling as well as contracts in construction. He has acted in the capacity of city engineer, and provides expert testimony in legal cases. Dino is a certified trainer as well as an author of a variety of training materials and best practices for civil engineering and surveying workflows. He is a past president of the Professional Land Surveyors of Ohio, Cleveland Chapter, and Surveyor of the year 2018. His present duties as Special Projects Engineer for the City of Cleveland, Department of Port Control, is the development of BIM, GIS and CMMS for two airports and a municipal harbor.



Brendan Dillon is the Program Manager for the Digital Facilities & Infrastructure Program for Denver International Airport. DEN is the fifth busiest airport in the United States and has developed a comprehensive BIM and Asset Management plan unsurpassed by any airport in the country. DEN's DFI program manages over 120 projects at a time with a net value in excess of \$2 billion. Prior to joining DEN, he had managed over \$1B in BIM projects, including as the BIM standards coordinator for the design team on Denver International Airport's South Terminal Redevelopment Project. Brendan is also the founder of the annual Airport Information Integration and Innovation (AI3) forum and is the founder of Red5ive Consulting, specializing in BIM deployment and integration for airports. Along with managing DEN's Digital Facilities & Infrastructure program, Brendan still enjoys getting into the weeds with Revit, writing scripts in Dynamo and generally getting his hands dirty.



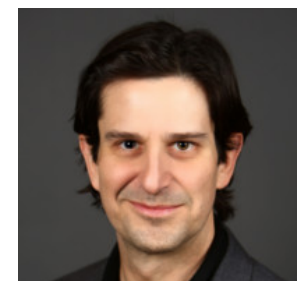
Nigel Stroud has worked for 28 years in the construction industry, Implementing Digital Asset Information strategies and evangelizing in efficient data workflows. His focus is always on a single source of data, providing decision making capabilities for a diverse customer base. As a practitioner, he has adopted a 'keep it real' approach enabling usable and sustainable solutions to be adopted. He was privileged to have worked for the duration of Heathrow's Terminal 5 and Terminal 2 programs, setting up and on-going management of the Common Data Environment. He is currently setting the company wide Asset Information Strategy and leading Information Management for the expansion program.



Lewis Watts has established a well-rounded understanding of design, construction and operational requirements. Understanding the impacts across the business and supply-chain has enabled him to better define consistent, efficient and cost-effective processes and technological solutions as the business or project requires. With experience spanning architectural design, project management, model coordination and BIM strategy, Lewis has developed a strong working knowledge of industry standards, guidance documentation and practical application, with a wealth of experience defining and implementing digital strategy, workflows, processes, standards, supporting documentation and templates within large infrastructure and aviation organizations.



Eddy Krygiel is a Major Projects Development Executive within the AEC Solutions team at Autodesk, Eddy focuses on BIM and technology workflows for Architectural, Engineering, and Construction clients. He works with large project teams and owners to help leverage end-to-end technology solutions to optimize design, construction, and facility management outcomes. Eddy has almost twenty years of experience in architectural offices and on a range of projects from single family residential to office, federal, civic, and aviation clients.



TOPICS OF DISCUSSION

- **The vendor supply chain – how to facilitate buy-in with delivering per standards?**
- **What is an reasonable level of data to ask for? What is too much or not enough? Is there a sweet spot so vendors can perform well?**
- **How do you make sure you're getting what you asked for? How do you perform quality control / quality assurance?**
- **What is the impact of NOT following a standard or asking for data?**
- **What are the drivers for wanting digital assets? Why does the owner care? How do you deliver that message to the supply chain?**
- **How do you incentivize compliance both with vendors and internal stakeholders?**
- **What are the biggest hurdles internally / within the owner's organization?**
- **What internal group has the most to gain? Which are the easiest to adopt the new systems? Which are the hardest?**
- **Questions from the audience?**