

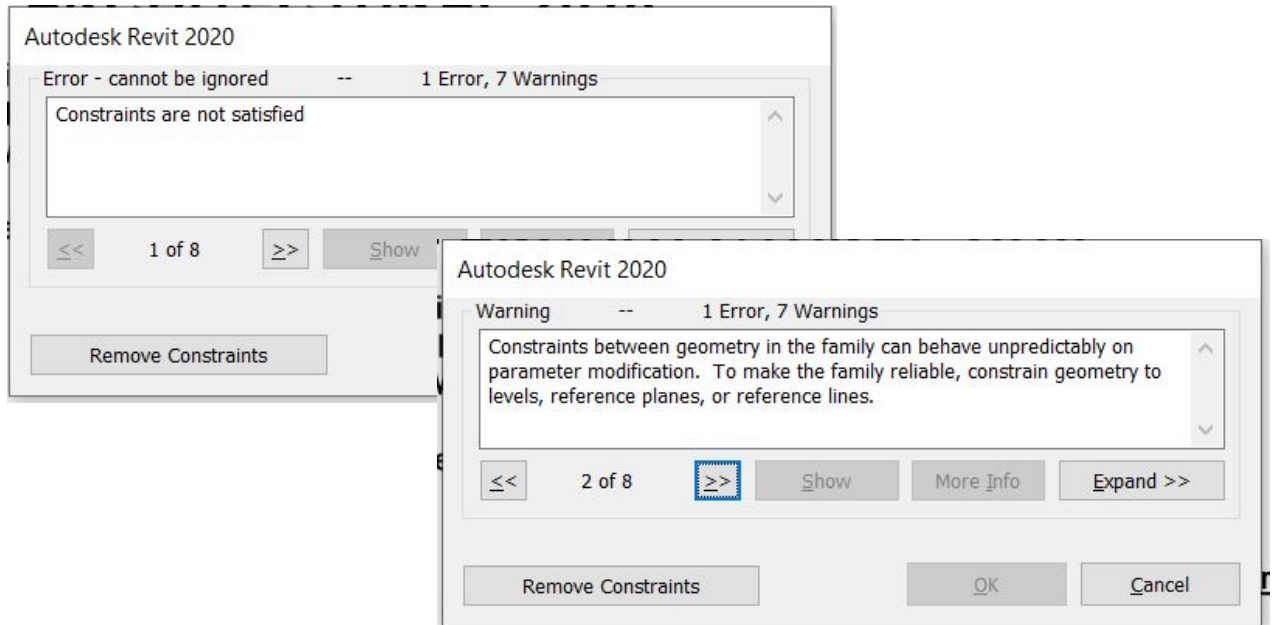
Additional Class Materials -

Appendix

- a. To address model health
 - Screen for causes and signs corruption -
 - screen for corrupt families

<https://knowledge.autodesk.com/support/revit-products/learn-explore/caas/CloudHelp/cloudhelp/2016/ENU/Revit-Model/files/GUID-FC6CC53B-0010-4AF9-BFE2-6B044191A645-htm.html>

- i. when any of the following constraint related errors pop up,

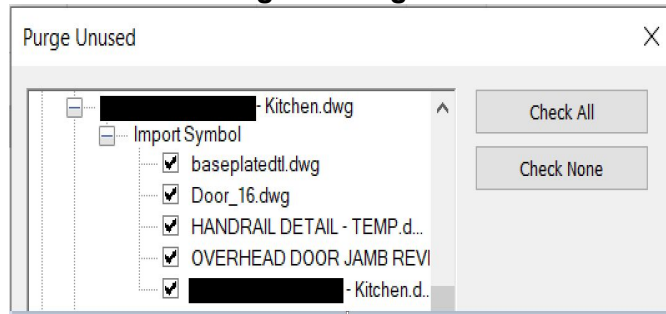


The family would need to be audited, saved to the Revit version that the project is in, and then reloaded.

- ii. Convert any in-place models to Revit families
 - <https://knowledge.autodesk.com/support/revit-products/learn-explore/caas/screencast/Main/Details/26ad32fc-5f7f-4fea-bf5e-7056e7aecb6c.html>
- remove imported / exploded DWGs
 - To see them – **Object Styles >> Imported Objects**
 - You will see the imported / linked DWGs, but you will only be able to delete the DWG layers, not the actual DWGs.

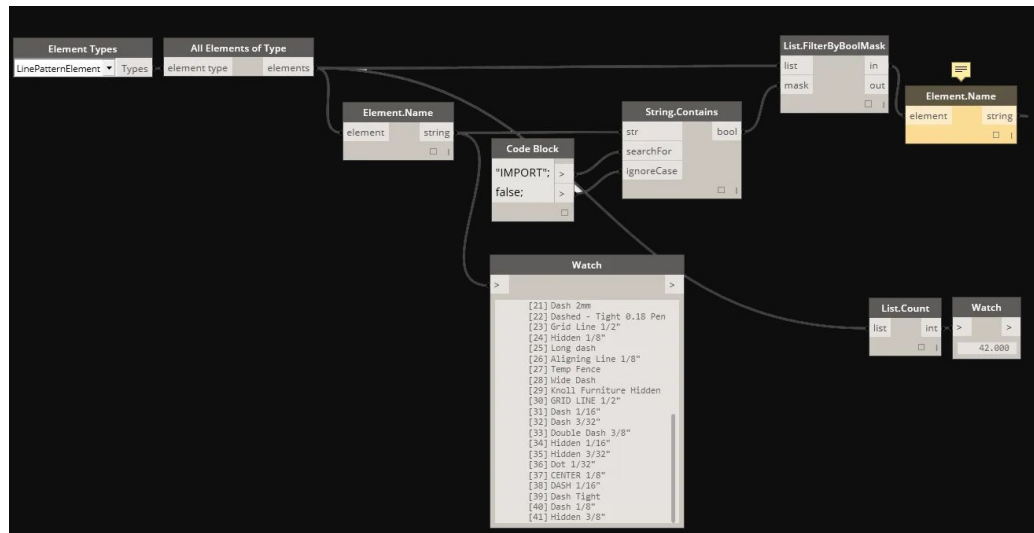
Category	Line Projection	Line Color	Line Pattern
-R16.dwg	1	RGB 118-118-1	Solid
-A1B01_Equipment Only.dwg	1	RGB 118-118-1	Solid
-baseplatedtl.dwg	1	RGB 118-118-1	Solid
-Equipment Layout No Walls.dwg	1	RGB 118-118-1	Solid
-CHI 3rd Floor.dwg	1	RGB 118-118-1	Solid
-CHI Concessions 1st Floor.dwg	1	RGB 128-128-1	Solid
-CHI Concessions 2nd Floor.dwg	1	RGB 128-128-1	Solid
-Curtain Wall Frame.dwg	1	RGB 118-118-1	Solid
-Curtain Wall Frame.dwg (2)	1	RGB 118-118-1	Solid
-Curtain Wall Frame.dwg (3)	1	RGB 118-118-1	Solid
-Door_16.dwg	1	RGB 118-118-1	Solid
-HANDRAIL DETAIL - TEMP.dwg	1	RGB 118-118-1	Solid
-Imports in Families	1	Black	Solid
-OVERHEAD DOOR JAMB REVISED.dwg	1	RGB 118-118-1	Solid
-Kitchen.dwg	1	RGB 118-118-1	Solid
-Kitchen Floor Plan.dwg	1	RGB 118-118-1	Solid
-STOREFRONT JAMB DETAIL.dwg (2)	1	RGB 118-118-1	Solid
-STOREFRONT JAMB DETAIL.dwg (2)	1	RGB 118-118-1	Solid
-Window Sill.dwg (3)	1	RGB 118-118-1	Solid

- To get rid of them – **Manage >> Purge Unused**



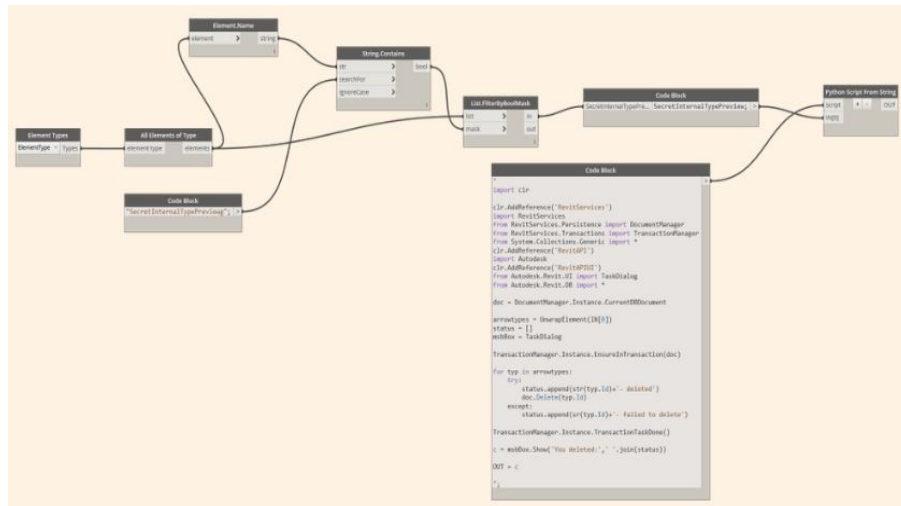
This will allow you to remove the errant DWGs in their entirety. But sometimes, you may not be able to catch imports – in which case, you would need to try the next step.

- Address Symptoms of corruption -
 - **IMPORT line patterns** are a symptom of imported DWG files. Sometimes even a directly linked DWG will bring them in.
 - How do I find them?
Manage>>Additional Settings>>Line Patterns
 - **Solution** – a Dynamo script will clean them out.



- **SecretInternal Arrowheads and Dimensions** are also a symptom of imported DWG files. Sometimes even a directly linked DWG will bring them in.
- How do I find them?
Manage>>Additional Settings>>Arrowheads

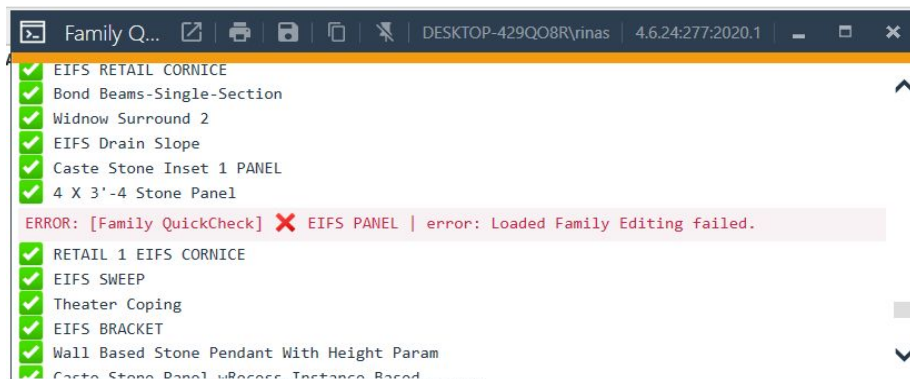
- **Solution** – a Dynamo script will clean them out.



- Some helpful tools that we considered and used during our process –
 - PyRevit – Family Quick Check tool

<https://ein.sh/pyRevit/>

Family Quick Check screens all families and stops when a corrupt family is encountered - when this error is seen, you will need to reload a clean version of the family from a library



- Family Size Reporter

<https://apps.autodesk.com/RVT/en/Detail/Index?id=3536917954730046399&appLang=en&os=Win64&autostart=true>

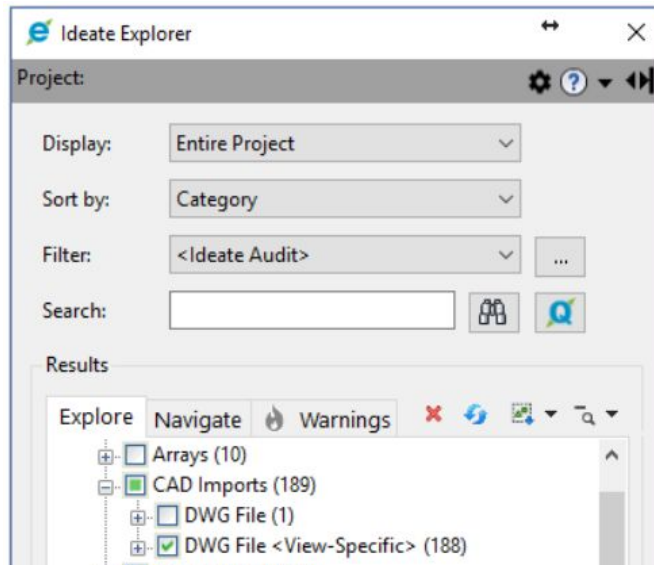
This handy app will produce a report of the number of families, their sizes, any nested families AND any nested DWGs. You will then be able to delete them as needed.

- Imaginit Utilities DWG Check tool

<https://www.imaginit.com/software/imaginit-utilities-other-products/utilities-for-revit>

iv. Ideate Apps

<https://ideatesoftware.com/support/help/ideate-explorer/how-to/how-do-i-delete-a-hidden-dwg>



More information on Infraworks -

<https://knowledge.autodesk.com/support/infraworks/learn-explore/caas/CloudHelp/cloudhelp/2015/ENU/InfraWorks-UserHelp/files/GUID-DA8FE9DA-1790-4DA2-8B92-D3DE6ECD6FD8-htm.html>

<https://knowledge.autodesk.com/support/infraworks/learn-explore/caas/CloudHelp/cloudhelp/ENU/InfraWorks-UserHelp/files/GUID-FFF2514C-0174-45F6-B530-480FD3A000BC-htm.html>

<https://knowledge.autodesk.com/support/revit-products/learn-explore/caas/CloudHelp/cloudhelp/2020/ENU/Revit-Collaborate/files/GUID-CBD6414F-2756-4AD5-95D7-D819DEEAC07A-htm.html>

More information about Autodesk Cloud rendering

<https://pano.autodesk.com/>

Difference between types of VR

<https://www.autodesk.com/solutions/virtual-reality>