



000MEP21505-L

Fabrication: Hacking ITM Content - Content Management Bootcamp

Darren Young
Southland Industries

Learning Objectives

- Safely use content from others
- Massage content to align with your database standards
- QA/QC your content before distribution
- How to manage your content and stop it from managing you

Description

We all have to deal with content. Some are well versed in creating ITM content. Others find it confusing and complicated. This lab will speak to both audiences with a different twist on content. We will NOT cover creating content from scratch that fits nice and neat in your database configuration. Instead, we'll show you how to take someone else's content and hack it into your configuration without destroying your database integrity. After all, it's not always about building the content, rather getting it done quickly to keep production moving. We'll also show how you can easily scale content creation to multiple users in a safe manner while keeping everyone on the same page with your configuration approach. Lastly, we'll show you how you can distribute your content into other configurations as well as QA/QC your work. In short, if you want to learn not just how to create content but Manage it, this lab is for you.

Your AU Expert(s)

A Midwestern transplant now based in Southern California, and a veteran Autodesk University speaker, Darren Young has held a variety of positions over the last 20 years, including CAD and CAM (computer-aided manufacturing) engineer, CAD administrator, and CAD/CAM systems developer. Currently, Young is the Building Information Modeling (BIM) applications manager for Southland Industries, one of the largest mechanical engineering and construction companies in the United States. Young manages one of the largest installations of Fabrication software licenses in the world. Young's true interest is the automation of manufacturing systems, and his experience ranges from lean manufacturing to architecture. This has led him to projects varying in scope from dress patterns to gas turbine piping. He has founded a consulting and development business, and he has been a technical editor and publication author.



Database Environments

Your production Fabrication database configuration is critical to the success of your organization. For this reason, you should be cautious about bringing unknown content into your database. This can be done by creating multiple database environments, used to examine, text and clean content from other sources.

- Create a “development” database configuration for working on content
- Create a “blank” database configuration for QA/QC of content

Validating Geometry

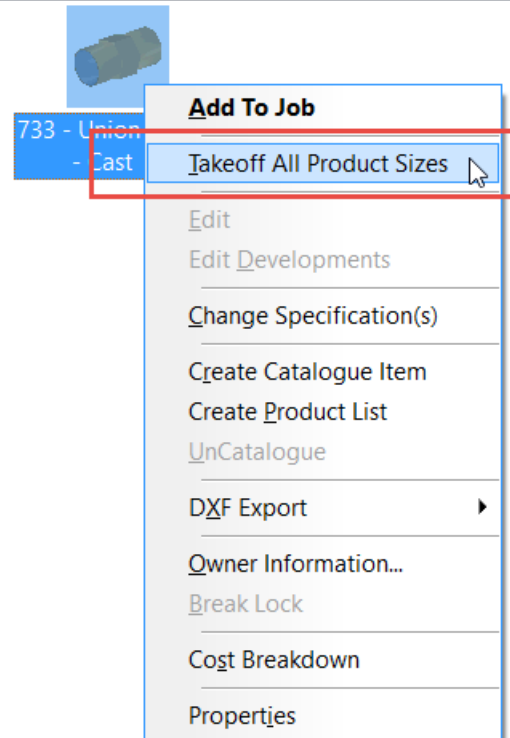
Geometry validation is an important part of validating content from other sources. Use ESTmep or CAMduct to takeoff one of every size in an ITM.

You can save as an MAJ and use the OPENJOB command in CADmep top import the MAJ or just stay in CAMduct/ESTmep to complete your content editing tasks.

Locked Content

If using locked content that you need to modify, you can clone the content to make your own editable version.

- Make new ITM using the same CID/Pattern number
- Examine the Dimensions/Option of the locked ITM to determine which are controlled by the product list.
- Extract the product list data using either method...
 - COD Script (provided in class)
 - Custom report that exposes the locked fields.
- Use Excel to clean up product list data for import into the new ITM
- Clone (Copy) the connectors/materials used by the locked content for use by your new ITM.





Realigning Connectors

You should have a “methodology” for how you manage your connectors.

- Name
- Group
- Connectivity

Rarely will content you get from somewhere else meet your naming standards. Simply copy/rename the connectors and point the ITM to it.

Realigning Materials

Similar to connectors, materials can be renamed per your standards (if a new material) or completely ignored if you already have it. Change ITMs to point to your materials.

Fix Paths/Names

Use the Button Path Repair tools and commands like VIPS (**V**alidate **I**tm **P**ath**S**) to rename or reorganize ITM content without breaking services or drawings.

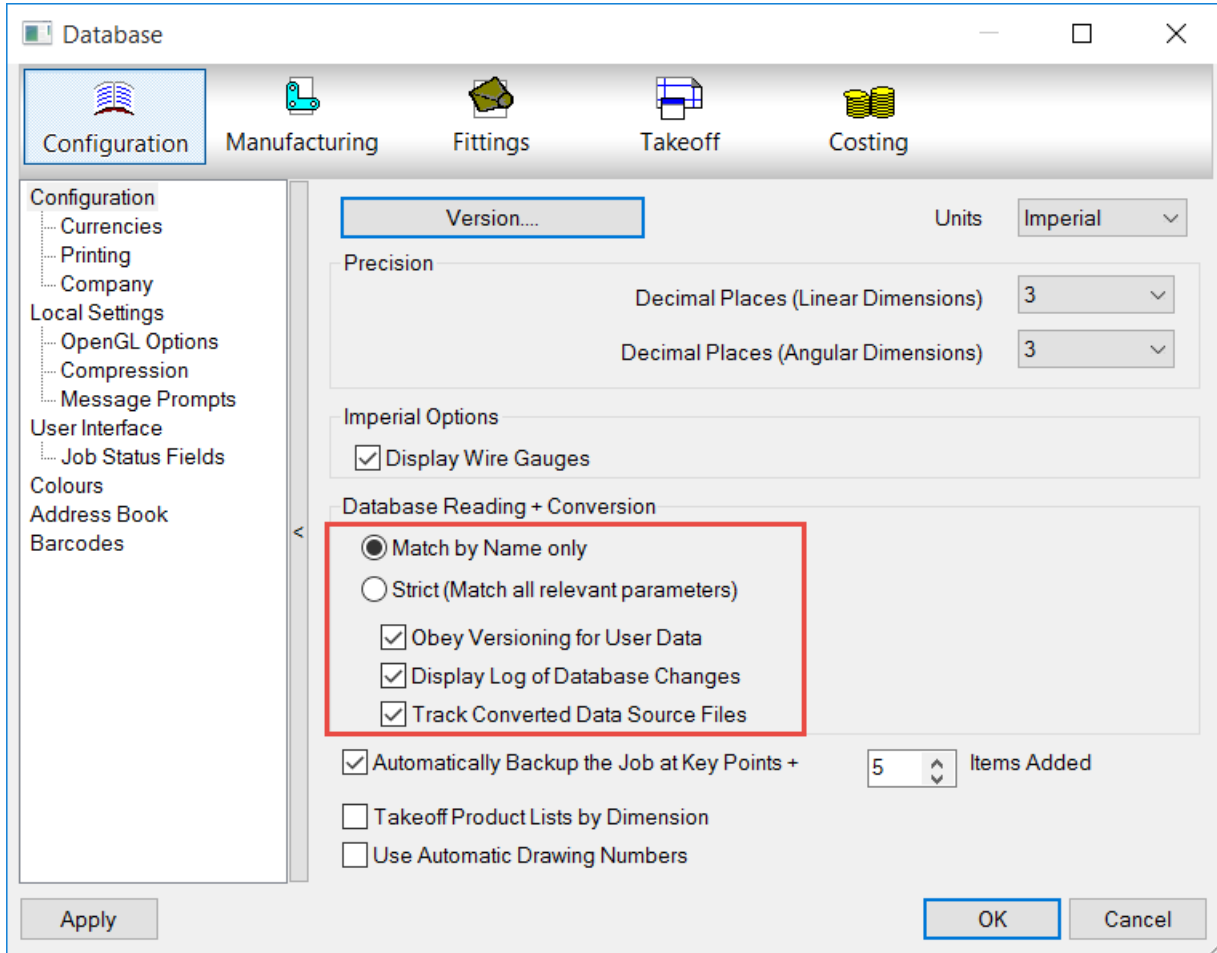
Use Excel to Understand your database

There's a lot of information you can export from your database. If there's not a function for exporting the data, often you can export it using scripts. When viewed, sorted and filtered in Excel, it can provide as wealth of information about your configurations. A couple more helpful functions are...

- ExportServiceDatabase
- SysScrReport

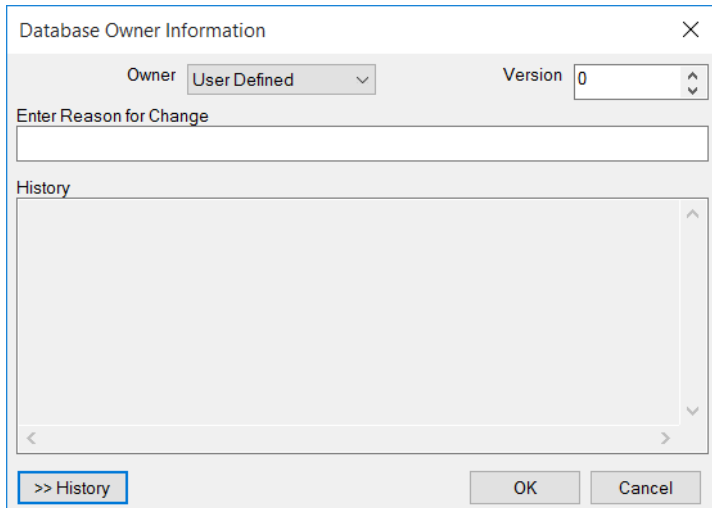
Transport Services / IEZ Files

IEZ files can transport services & content from one database to another. To best use this functionality, it's recommended that you use User Data and Versioning. In order to effectively use this functionality, it's recommended that certain options are enabled within your database configuration.



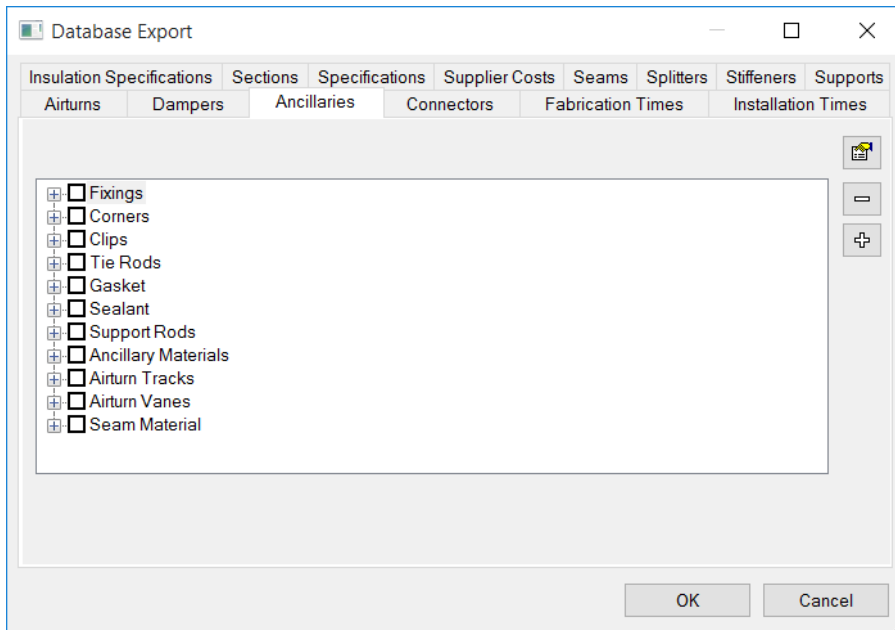
OWNER INFORMATION

Use Owner Information and Versioning of Materials, Connectors, Seams, even ITM's and services to help ensure when young move data from one configuration to another, that only the newest data is imported.



Import / Export Database Entries

Use commands like DBEXPORT or DBIMPORT to move database entries between different configurations.





Resources

Autodesk Content: <http://www.building3dcontent.com/>

Managing a Database: <https://knowledge.autodesk.com/support/fabrication-products/learn-explore/caas/CloudHelp/cloudhelp/2016/ENU/Fabrication-UsersGuide/files/GUID-84A3B553-FA17-47FD-8568-4758B822614B-htm.html>

Piping CID/Patterns: <https://knowledge.autodesk.com/support/fabrication-products/learn-explore/caas/CloudHelp/cloudhelp/2016/ENU/Fabrication-UsersGuide/files/GUID-05C92B70-163E-41FD-B543-28350A563395-htm.html>

Sheetmetal CID/Patterns: <https://knowledge.autodesk.com/support/fabrication-products/learn-explore/caas/CloudHelp/cloudhelp/2016/ENU/Fabrication-UsersGuide/files/GUID-493A0891-D5E5-4A7C-B448-D0C1E9590D88-htm.html>

Electrical CID/Patterns: <https://knowledge.autodesk.com/support/fabrication-products/learn-explore/caas/CloudHelp/cloudhelp/2016/ENU/Fabrication-UsersGuide/files/GUID-729126EB-A222-4594-A9BA-953AB0D2CA8C-htm.html>

ITM Creation Step by Step: <https://knowledge.autodesk.com/support/fabrication-products/learn-explore/caas/CloudHelp/cloudhelp/2016/ENU/Fabrication-UsersGuide/files/GUID-F4AF7D00-2050-45EB-89F5-638D04948BE5-htm.html>

Creating Connectors: <https://knowledge.autodesk.com/support/fabrication-products/learn-explore/caas/CloudHelp/cloudhelp/2016/ENU/Fabrication-UsersGuide/files/GUID-B1ECD34A-BE51-49C6-8564-8F680FB5F335-htm.html>

Creating Materials: <https://knowledge.autodesk.com/support/fabrication-products/learn-explore/caas/CloudHelp/cloudhelp/2016/ENU/Fabrication-UsersGuide/files/GUID-8764672C-B258-4C00-89AA-5CAB5B9FE985-htm.html>



AUTODESK UNIVERSITY

