



GEN21392

60 AutoCAD Tips in 60 Seconds

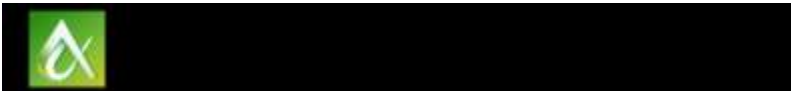
Lynn Allen
Autodesk Inc.

Learning Objectives

- Learn how to complete AutoCAD tasks in fewer steps
- Learn how to set up the AutoCAD user interface for maximum productivity
- Learn how to use the new features from recent releases of AutoCAD software
- Discover tips that AutoCAD software veterans and gurus know

Description

If you want a plethora of power-user tips, be sure join Cadalyst Columnist and Autodesk, Inc.'s, technical evangelist Lynn Allen as she takes you through a whirlwind of productivity techniques that are certain to improve your everyday drawing life. At a tip a minute, you'll be sure to discover some top-secret AutoCAD software features that will remove tedium and boost your ability to meet project deadlines. Note: This class is updated with new tips every year This session features AutoCAD, AutoCAD Civil 3D, and AutoCAD LT. AIA Approved



60 AutoCAD Tips in 60 Minutes

Note: All attendees will get a hardcopy of my AutoCAD 2017 Tips and Tricks booklet. The first 40 tips are covered in that. Below you'll find information on any of the tips not contained in the booklet!

Lazy Layer Tips:

41) Move Layer Drop-down list to QA Tool Bar

Tired of jumping to the Home tab on the ribbon just to change your current layer? Simply right click on the layer drop-down list to add it to the QA Toolbar



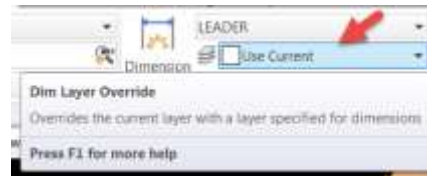
42) Set a default Hatch Layer

Tired of setting a layer for hatching? From the Hatch tab in the ribbon, drop down Properties and you can set up a hatch layer override.



43) Set a default Dimension Layer

Use the Dimension Layer override drop-down list to set a default layer for all of your dimensions.



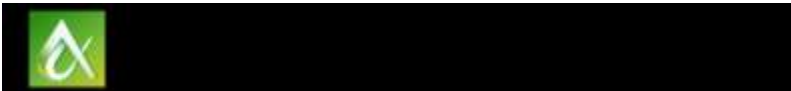
Migrate Custom Settings

44) Migrate Settings after install

When installing AutoCAD onto the same computer as a previous release - simply go to Start=>Autodesk=>AutoCAD 2017=>Migrate Custom Settings=>Migrate from a previous release. Select the AutoCAD Release you are migrating from and the custom settings you want to migrate.

Note: AutoCAD cannot be open at the time.





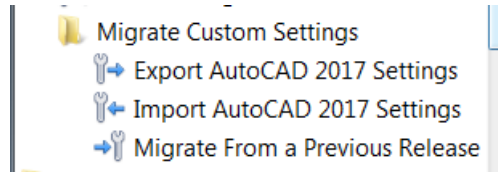
45) Reset Settings to default

Should everything go terribly badly – no worries! You can easily reset the settings back to the AutoCAD default with Start=>All Programs=>Autodesk=>AutoCAD 2017=>Reset Settings to Default.



46) Migrate same release – different computer

- Export Settings to .zip file
- Import Settings from .zip file



47) Migrate different release – different computer

Install the free trial version of newer release of AutoCAD on old computer.

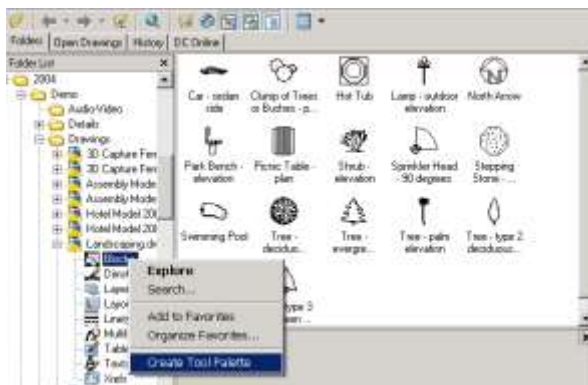
Migrate settings to the new release. Then Export to zip on old computer...Import Zip onto new computer

48) Migrate different release – different older computer

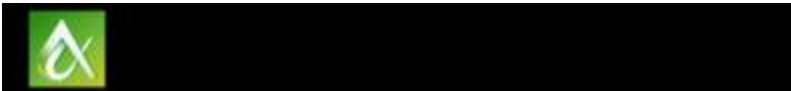
- Install trial version of older release of AutoCAD onto new computer
- Export settings on old computer to .zip
- Import settings (.zip) on new computer
- Migrate!

Tool Palettes (Ctrl+3)

49) Quickly create a Tool Palette of your blocks in Design Center



Tip: Be sure to PURGE the drawing with the blocks first!



50) Drag and Drop blocks to your Tool Palette

Highlight a block and use a right click to drag a block to an open tool palette. Your new tool will also remember the layer, rotation angle, scale, etc.

51) Drag and Drop Hatch patterns

Easily drag an existing hatch onto the palette that will remember the pattern, scale, layer, etc.

52) Set up tools to automatically scale to your drawing

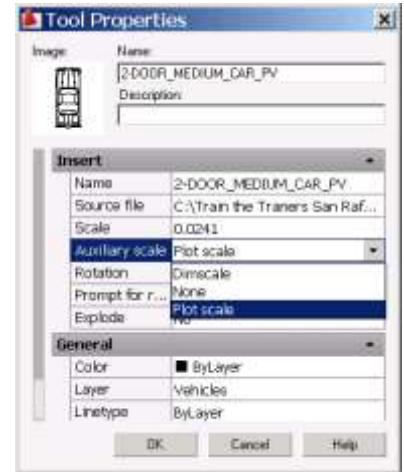
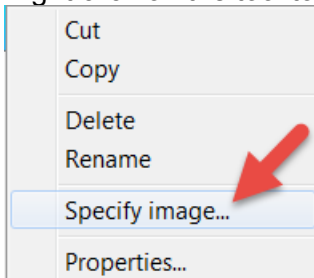
Set the Auxiliary scale factor to Plot Scale or Dimscale – let AutoCAD do the scaling for you!

53) Speedy dimensioning techniques

Need to duplicate a dimension? Grab it and drop it on the Tool palette (all settings/properties will be remembered)... Drag/drop new dimensions.

54) Easy to customize the icon

Right click on the tool to get to the specify image option



Ways to Torture your Coworkers

And now to the most popular part of the class...the dreaded “ways to torture your coworker” section! (You didn’t hear them from me!)

55) Ctrl+9 – Turn off command line

(It’s a toggle so you can easily turn it back on...but wait awhile). ☺

56) Zoomfactor controls speed of mouse wheel (3 -100)

Set it to a low number to help your coworker burn more calories!

57) Zoomwheel to reverse Zoom

Originally set to help Inventor users match zoom directions – set to 1 to reverse zoom!

58) Set Pickbox to 0 or 50

No pickbox or a great big one!

59) Set FILEDIA to 0 (turns off the file dialog box for commands like OPEN and SAVE)

60) MTJIGSTRING

Use this to set your default text string to something exciting!

61) MODEMACRO

MODEMACRO controls a text string along the bottom of the AutoCAD display editor.

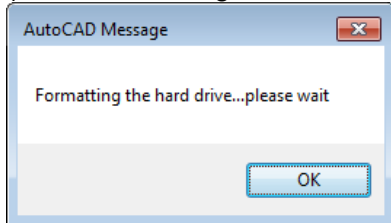


62) UNDEFINE

Have some fun and undefine your coworkers commonly used commands! (Note: Don't forget REDEFINE)

63) ALERT

(alert "Formatting the hard drive...please wait")



Be sure to visit my blog for more tips www.autodesk.com/lynnallen

And visit Cadalyst for my short video tips! www.cadalyst.com

Thank you for joining me!!! Don't hesitate to email me if you need help understanding one of my tips. Lynn.allen@autodesk.com