



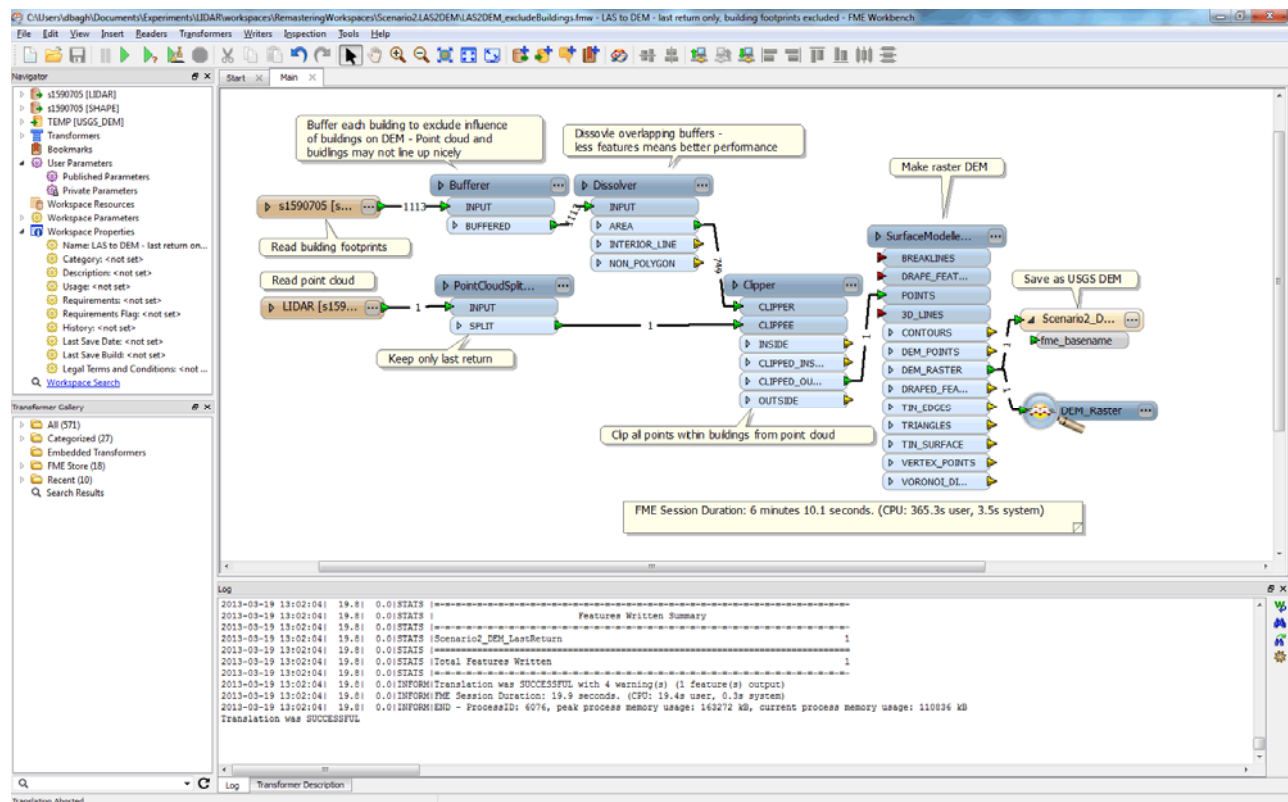
FME Desktop

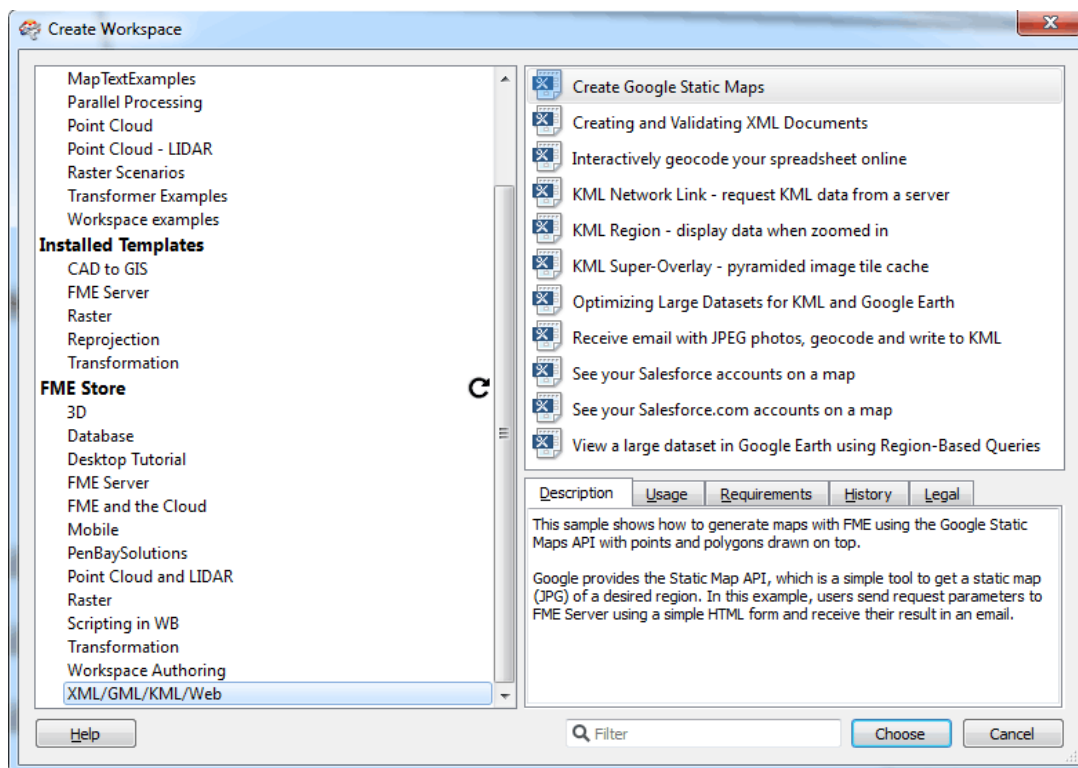
Improve Productivity with FME Desktop's Key Features

Easy-to-Use

Configure transformation workflows in minutes, or even seconds, with FME Desktop's intuitive interface.

- **Get started quickly with a point-and-click interface**
- **Handle any data with highly flexible transformer tools**
- **Understand at a glance with self-documenting workflows**





Time-Saving Functionality

Automation

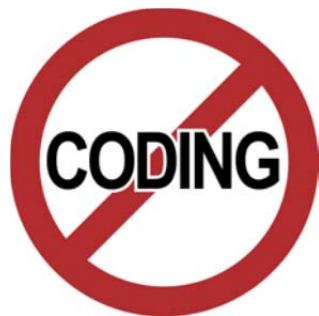
Data processes are launched with a mouse click and run in the background without manual interaction - freeing you to work on other tasks.

Repeatability

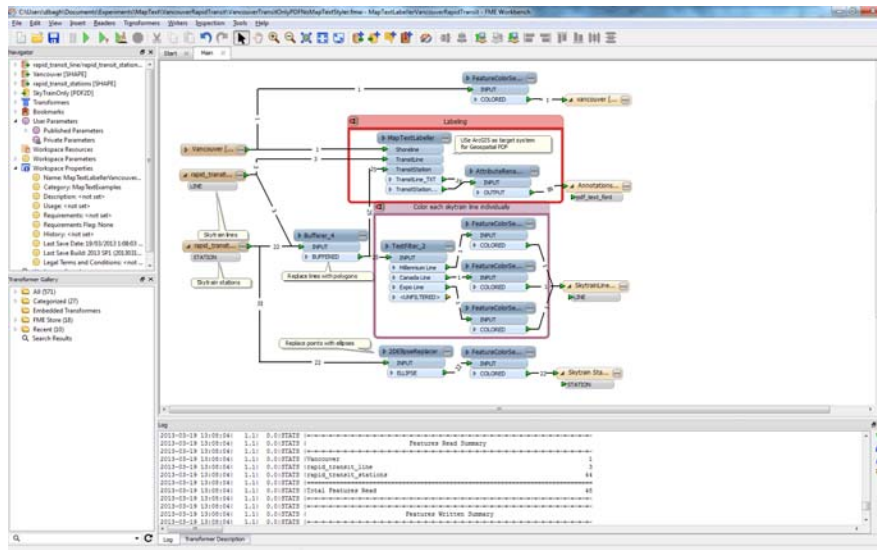
Cut down on workflow configuration time with data-independent, reusable workspaces and pre-built workspace templates designed to save you time.

Absolutely No Coding Required

FME Desktop is designed for use by all levels of technical expertise and absolutely no knowledge of coding is required.



Components:

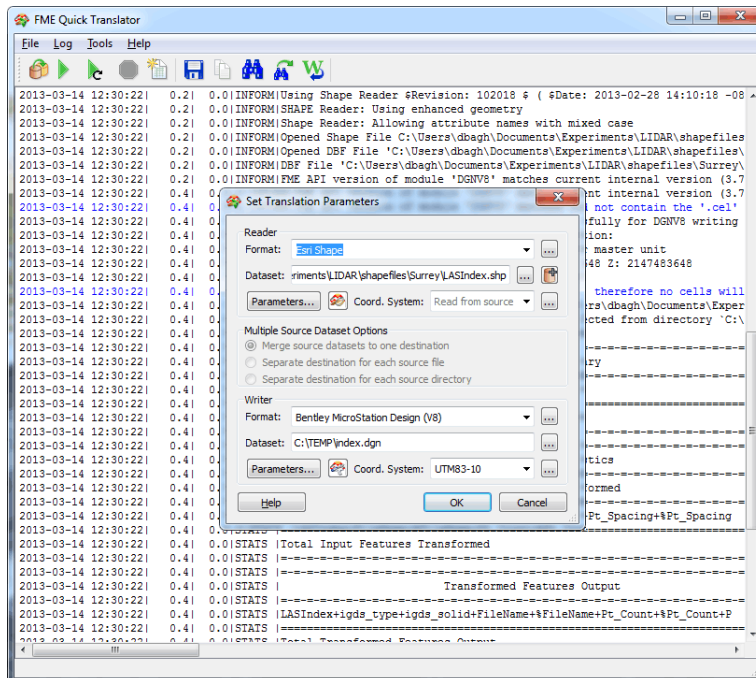


FME Workbench

Everything FME, whether via FME Desktop or FME Server, starts in this authoring environment! Use it to configure and run your transformation workflows.

FME Data Inspector

Inspect your data's attributes and geometry. This tool makes it easy to understand data structure - before, after and during translation.



FME Quick Translator

An interface for quickly executing simple one-to-one format conversions.