

PL9967

# If the PLM shoe fits... (Trying on Autodesk PLM 360 for size)

Keri Bender  
PLM Product Manager

## Learning Objectives

- Understand what PLM is and how it can benefit your manufacturing processes
- Determine if the timing is right for your company to implement a PLM solution
- Get an overview of how quickly and easily it is to implement PLM 360

## Description

What is PLM? How do I know if I am ready for product lifecycle management (PLM)? How complicated is it to set up Autodesk PLM 360 software? Are you currently managing your day-to-day workflows by emailing your Microsoft Excel spreadsheets around? Do you wish there was a better way to organize the state of your products within the manufacturing timeline. Have you wondered about PLM but thought it probably wasn't for you? This discussion will be a great opportunity to see how customers (especially from smaller companies with few employees) can take advantage of Autodesk PLM 360 software. In this discussion we will showcase how some of the basic workflows work, how they can apply to your workflow, and how implementing Autodesk PLM 360 software will have an immediate impact on your efficiency. We will discuss and show examples of workflows, milestones, and approvals—what we ship out of the box and what level of implementation you should consider.

## Your AU Experts

*Keri Bender is an Autodesk PLM 360 product manager at Autodesk, Inc., based in the Boston office in Massachusetts. In this role she is primarily focused on creating and delivering content and tools for both customers and Autodesk's channel partners to increase successful use of Autodesk PLM 360, creating evangelists in the process. Keri came to Autodesk after spending over 13 years defining, implementing, supporting, and evangelizing CAD, data management and support, and community tools at DS SolidWorks. Keri earned her BSME from the University of Central Florida.*



## What is PLM?

### What all manufacturers aim for ...

Requirements Design Engineering Production Planning Production Delivery

AUTODESK UNIVERSITY 2015 AUTODESK.

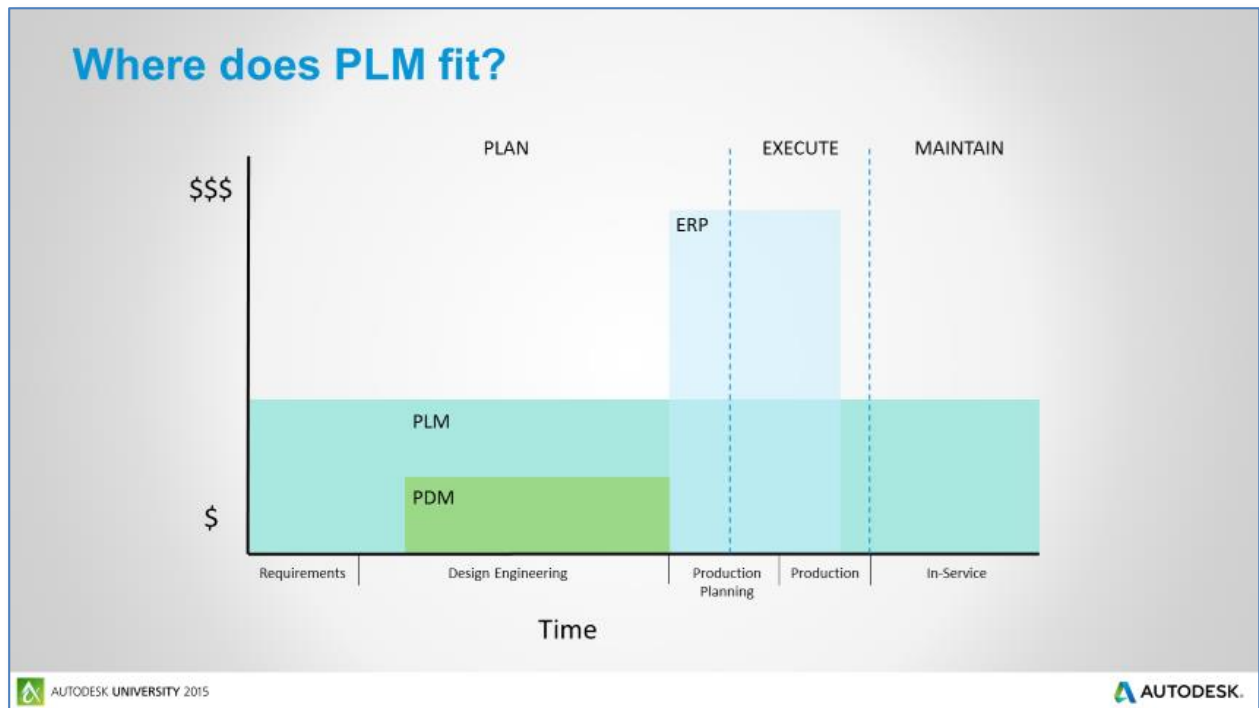
### What all manufacturers usually get ...

Requirements Design Engineering Production Planning Production Delivery

AUTODESK UNIVERSITY 2015 AUTODESK.

### Benefits of implementing a PLM System:

- Full insight of Product, Project and Process
- Focus on value added tasks – removes waste from processes
- Enter data once, accessible by the right people at the right time
- Improved staff utilization
- Faster to market
- Better quality
- More product innovation
- Higher customer satisfaction



PLM is far wider in scope than both PDM and ERP. It manages information and processes across the whole product lifecycle, from initial requirements right through to In-Service.

The key to making these solutions work for you is using the right tool for the right job. You wouldn't use PLM to do what ERP should do, such as manage the physical shipping to, and invoicing of, your customers. Similarly, you wouldn't use ERP to manage what PLM is designed for, such as the new product development process. PLM, PDM and ERP will typically co-exist in an organization and, implemented properly, will complement each other.

## Are you ready for PLM?

### What processes do you need to manage?

Autodesk PLM 360 sweet spots:

- Bill of Materials\*
- Change Management\*
- New Product Introduction
- Supplier Collaboration
- Quality

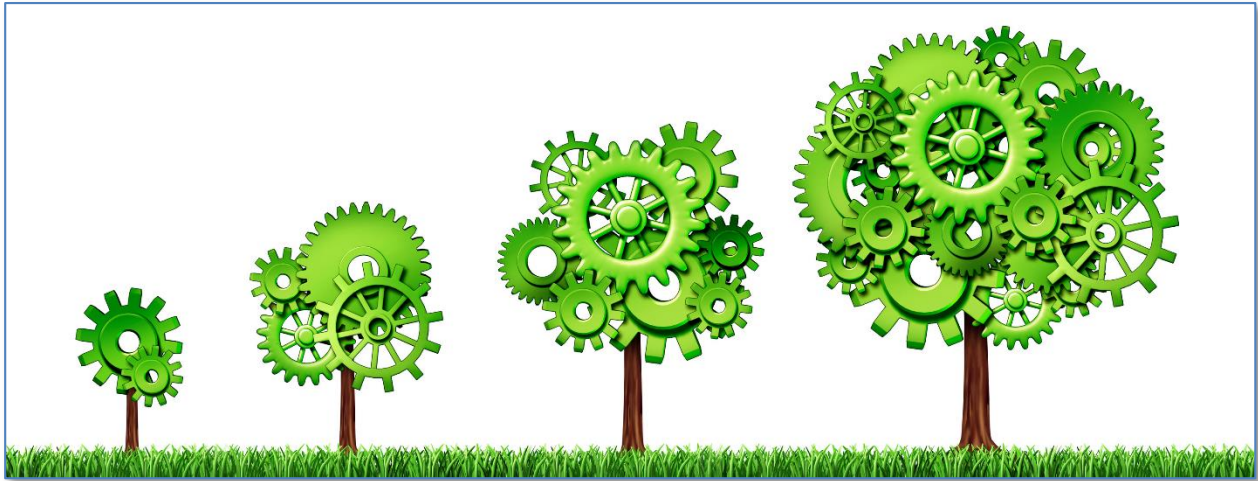
\*Sweet spots – foundations for companies just getting started with PLM

### Other questions to ask yourself:

- Have you built past your first prototype
- Are you getting ready to introduce products to the market?
  - You will want/need to manage your BOM's
- Have you started collecting your parts list?
  - Even without Part numbers – PLM360 can help with that
- Do you need to gain control over your BOM and CM?
  - Are you currently tracking your changes with spreadsheets, forms and emails?



## Implementing Autodesk PLM 360



### Simple Implementation

- Out of the Box workflows
- Recommend Starter Packs or Advisor/Partner Small Customer engagement packages to help you get familiar with workflows
- Best fit for small start-ups or low seat-count companies ready to gain control of their processes
- Designed to get you up and running fast – low impact to your resources
- Get started with just a few seats
- Start with a simple workflow (\*this is key!)
- You can gain control of your BOM and Change Management within a few weeks with this approach!

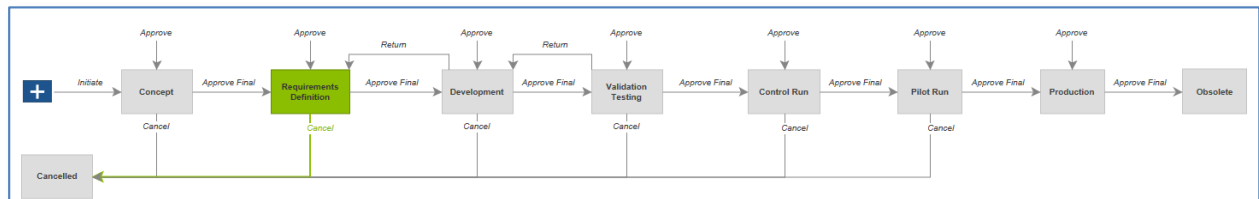
### Standard Implementation

- Ready to grow from a Simple Implementation
- Combining Multiple workflows
  - E.g.: BOM & Change, NPI and Supplier Collaboration
- One or two integrations with other software
- Autodesk Consulting or Advisor/Partners to help map a plan and implement
- Designed to help connect multiple processes and/or softwares together



## Large Scale Implementation

- Ready to grow from Standard
- Complex integrated workflows
- Multiple integrations with other software



- Autodesk Consulting or Advisor/Partners required to help map a plan and implement
- Designed for the larger companies just starting PLM or migrating over from other systems, as well as those organically growing their PLM implementation

## Explore Autodesk PLM 360

- Request a Trial through our [website](#)
  - You will be contacted by Technical Sales – let them know you learned about the trial through AU
  - This will include a User Tutorial Guide with step by step instructions for walking through BOM & CM scenarios as I just did
- Visit our [You Tube Channel](#)
  - Great way to see demos
- View our [Essential Skills Videos](#)
- Join our active [User Community](#)
  - Most valuable interaction is between users
- Attend a Virtual User Group or [Accelerate event](#)

