

**REBAR SIZES SHOWN ARE METRIC**

QTY	DESCRIPTION	REBAR SIZE	REMARKS
6.8	WM-D	SHTS (D) 6 X 6 - W4.0 X W4.0 (8'-0" X 11'-10")	
4	GRTB	3" DIA X 24" HIGH CONCRETE GROUT TUBE	
4	RL3/79589	RL3/79589 X 12-1/2" 8T/10T TECH ERECTION ANCHOR ( GALVANIZED)	
8	RL-31	SHEAR BAR (79142)	
4	SL	1/2" DIA X 6'-0" STRAND LOOP	
4	MCC	MC CONNECTOR (STAINLESS)	
12	P335	#22M X 3'-9 3/4" BAR W/ LENTON TAPERED THREAD ONE END & ERICO EL22SA FORMSAVER	4' - 0"
2	SP365	PL 3/8" X 8" X 0'-8" W/ (4) 5/8" DIA X 4 1/8" BARS	
2	M70	REBAR HAUNCH ASSEMBLY W/ (4) #13M BARS	1' - 7 1/4"
2	M71	REBAR HAUNCH ASSEMBLY W/ (4) #13M BARS	1' - 7 1/4"
1	5A-LT	PANEL LINER "5A-LT"	
1	5A-RT	PANEL LINER "5A-RT"	
1	5B	PANEL LINER "5B"	
1	5C	PANEL LINER "5C"	
1	BM80	L 1/2" X 6" X 6" X 20'-0" W/ (6) 13/16" DIA. HOLES (PRIMED)	20' - 0"
6	FX-2	FERRULE LOOP INSERT FX-2 3/4" DIA X 4 1/8" W/ 3/4" DIA. X 3" NC THREADED ROD & 3/4" DIA HEAVY HEX NUT & WASHER (E-PLATED)	
8	MB DB-52 8T	MB DB-52 10S DOGBONE 8T X 10" LG ANCHOR (GALV)	
8	MK13523	#13M BENT BAR (T2) X LENGTH SCHEDULED	5' - 9"
12	MK13524	#13M BENT BAR (17A)	4' - 0"
2	MK16502	#16M BENT BAR (17)	7' - 4"
2	S13M	#13M STRAIGHT BAR	5' - 10"
2	S13M	#13M STRAIGHT BAR	6' - 4"
2	S13M	#13M STRAIGHT BAR	12' - 0"
2	S13M	#13M STRAIGHT BAR	12' - 3"
4	S16M	#16M STRAIGHT BAR	3' - 5"
4	S16M	#16M STRAIGHT BAR	3' - 6"
2	S16M	#16M STRAIGHT BAR	12' - 0"
4	S16M	#16M STRAIGHT BAR	12' - 2"
2	S16M	#16M STRAIGHT BAR	12' - 4"
8	S16M	#16M STRAIGHT BAR	23' - 9"

**FINISH NOTE:**  
 FF = FORM FINISH  
 SB = MODERATE SANDBLAST

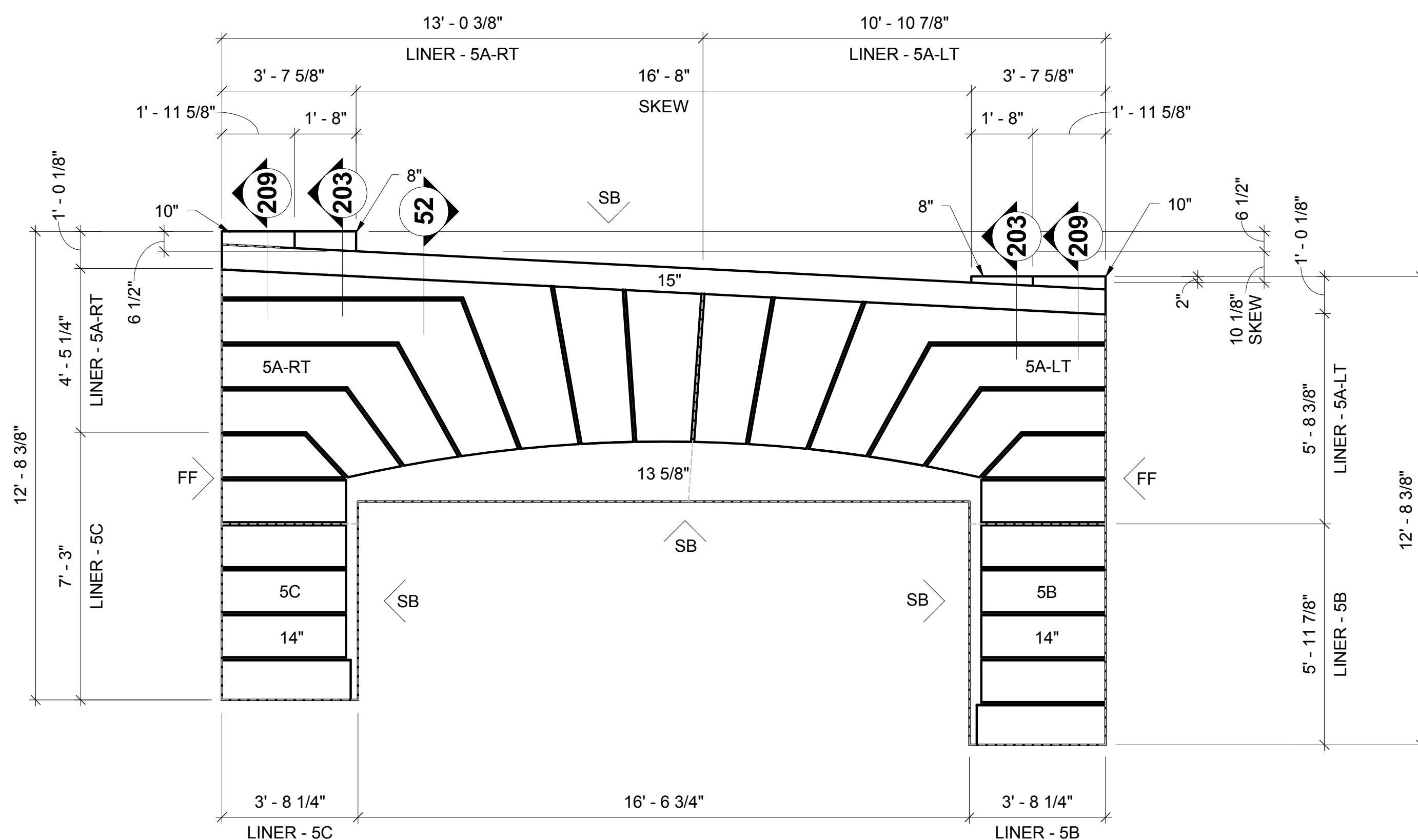
**SHOP NOTE:**  
 SEE SHEET 2 FOR SECTIONS & DETAILS

**SHOP NOTE:**  
 REINFORCING AROUND OPENINGS AND BLOCKOUTS TO BE 3" CLEAR TO THE FIRST BAR AND 6" O/C FOR ADDITIONAL BARS - U.N.O

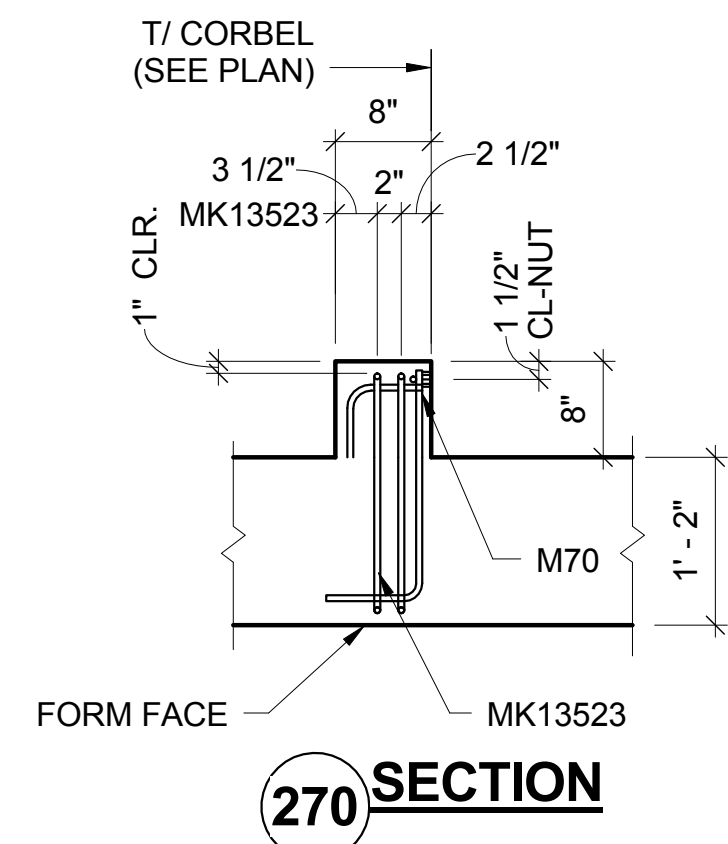
**PRODUCTION FINISH**

TOP SIDE..... LIGHT BROOM  
 ENDS..... SEE PLAN  
 SIDES..... SEE PLAN  
 FORM SIDE..... MEDIUM SANDBLAST  
 OPENINGS..... SEE PLAN

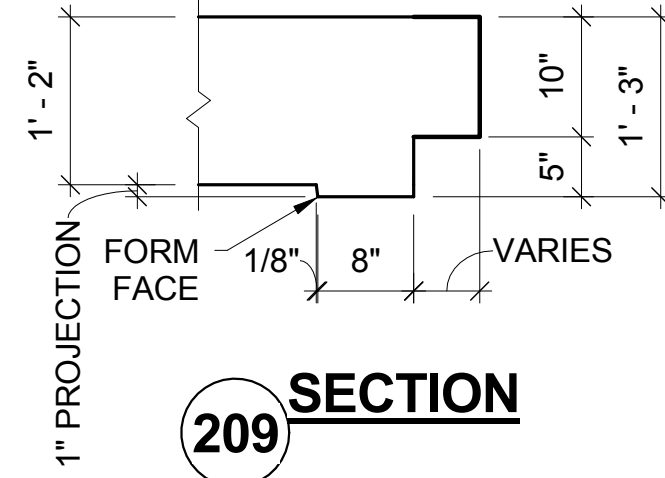
BLOCK AT STRIPPING POINTS FOR STORAGE & SHIPPING



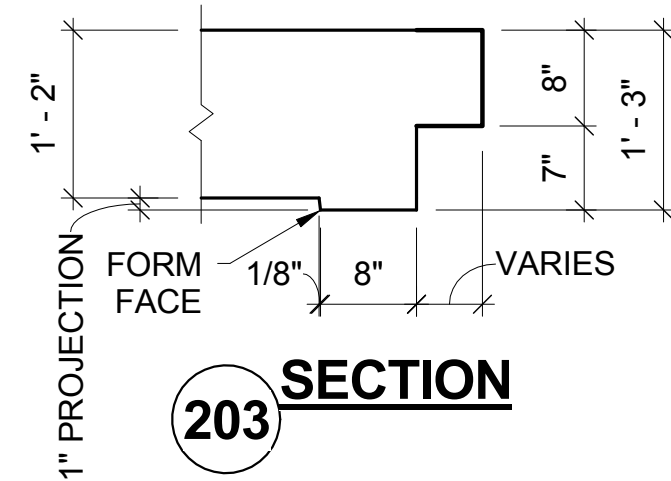
REQ'D	EMBED	DESCRIPTION	LENGTH
<b>MATERIAL LIST</b>			
<b>METROMONT</b>			
<b>CONTROL NUMBERS</b>			
611	616	622	649
655			
LENGTH	WIDTH	ADD-ONS	WASH/BLAST
23' - 11 1/4"	13' - 11"	Yes	Yes
		No	No
REQ'D	WEIGHT	FACE YDS.	BACK YDS.
5	34,789	8.59	N/A
		FINISH SF.	CODE
		230.32	R
APPROVED FOR PRODUCTION			
10/16/15	JAG	1	
DATE	BY	ISSUE	DESCRIPTION
DWG. COVERS 14" HORIZONTAL SOLID WALL PANEL			
PROJECT JAMES MADISON UNIV.			
DRAWN BY: VAC	DATE: 10/07/15	JOB NUMBER	DRAWING NUMBER
CHK'D BY: JAG	DATE: 10/16/15	6084	WPA110 (SHT. 1 OF 2)



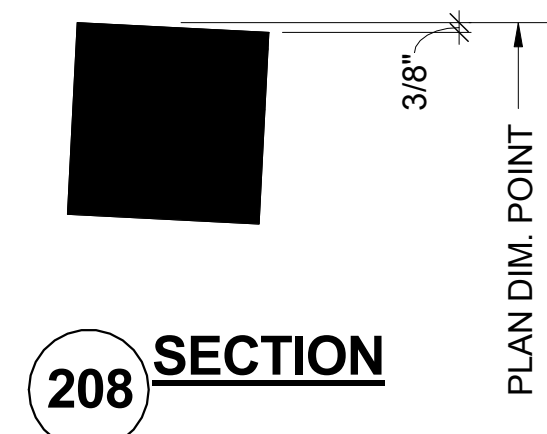
**270 SECTION**



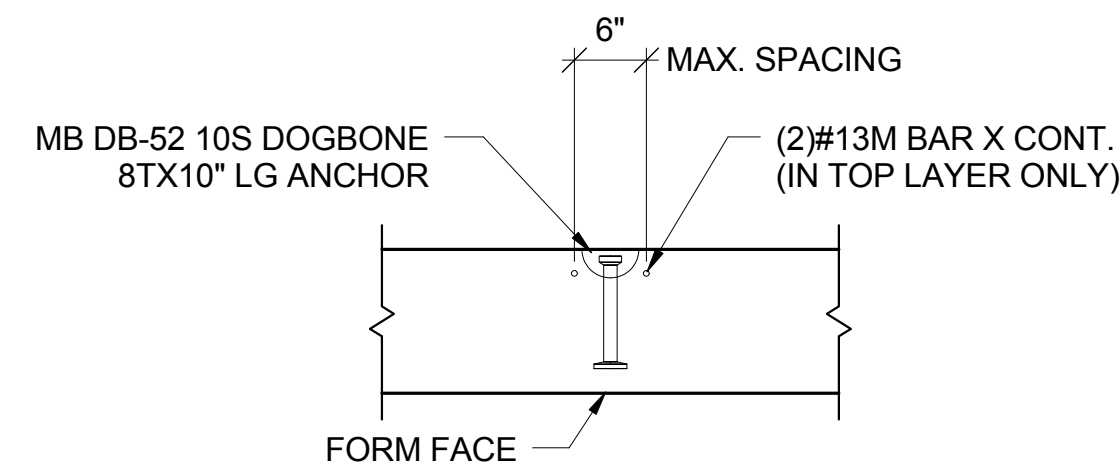
**209 SECTION**



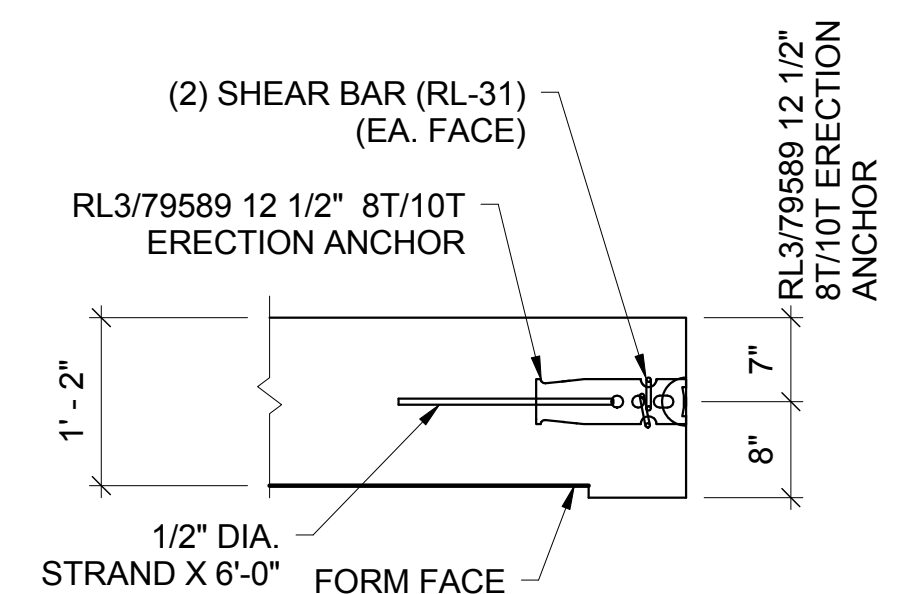
**203 SECTION**



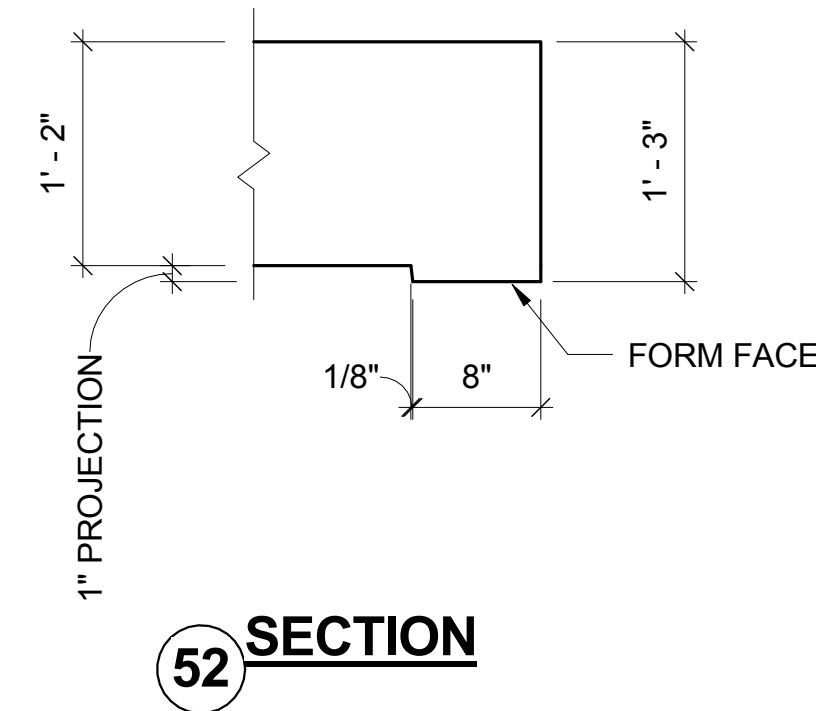
**208 SECTION**



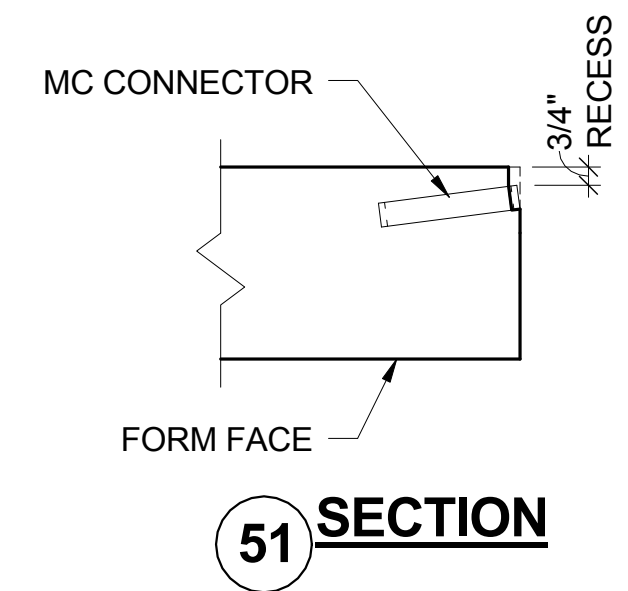
**TYP. STRIPPING INSERT**



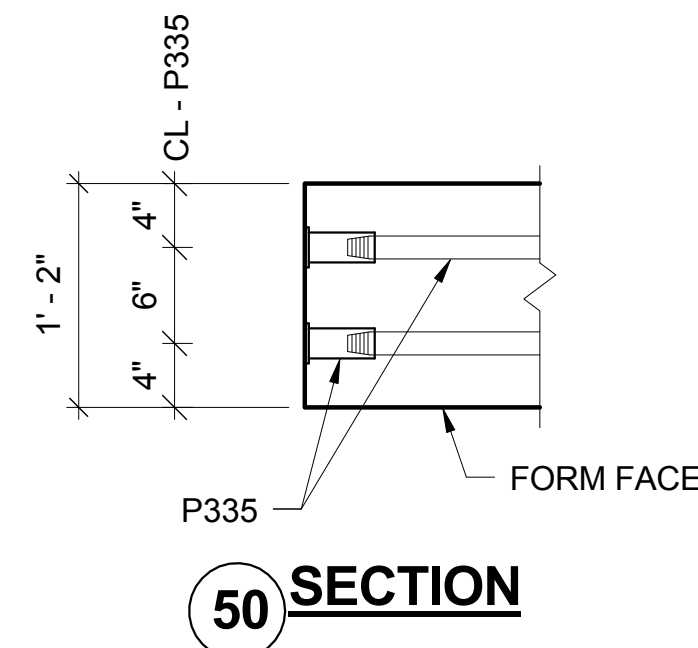
**TYPICAL ERECTION ANCHOR**



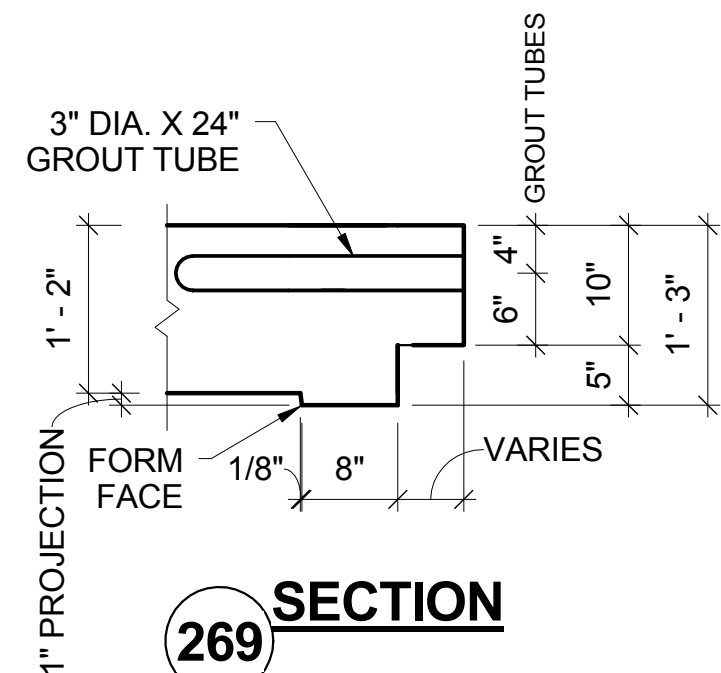
**52 SECTION**



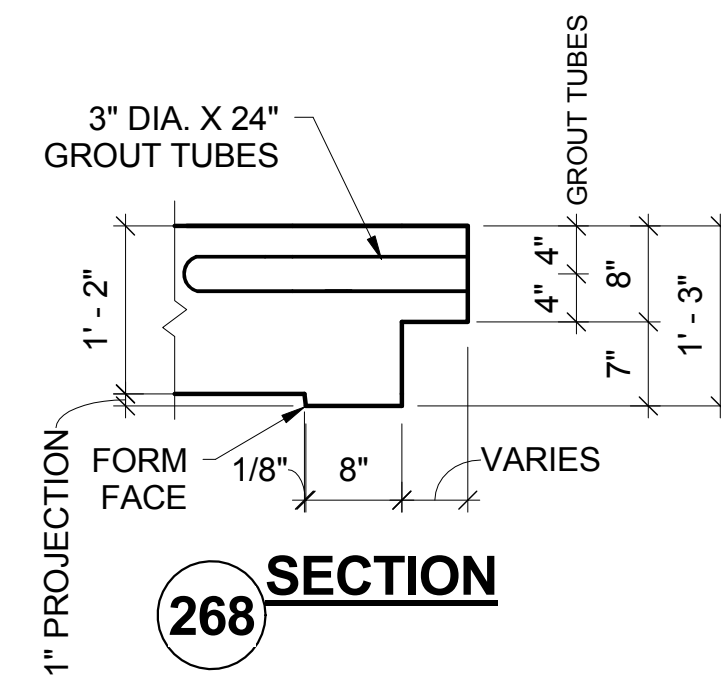
**51 SECTION**



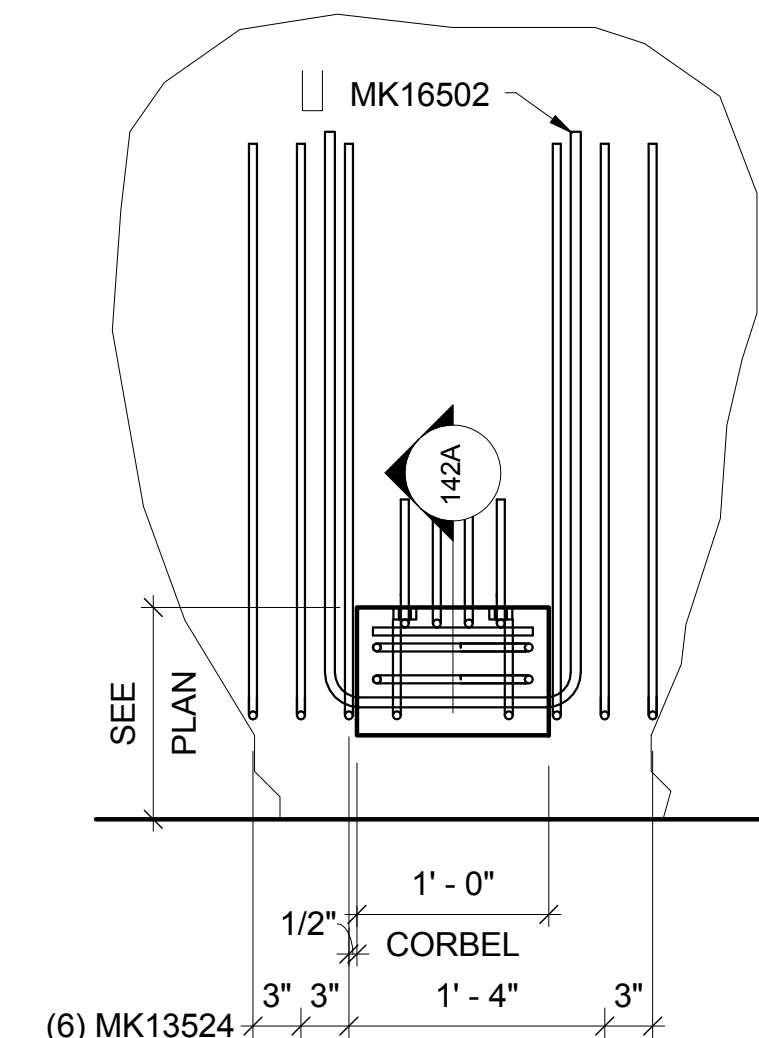
**50 SECTION**



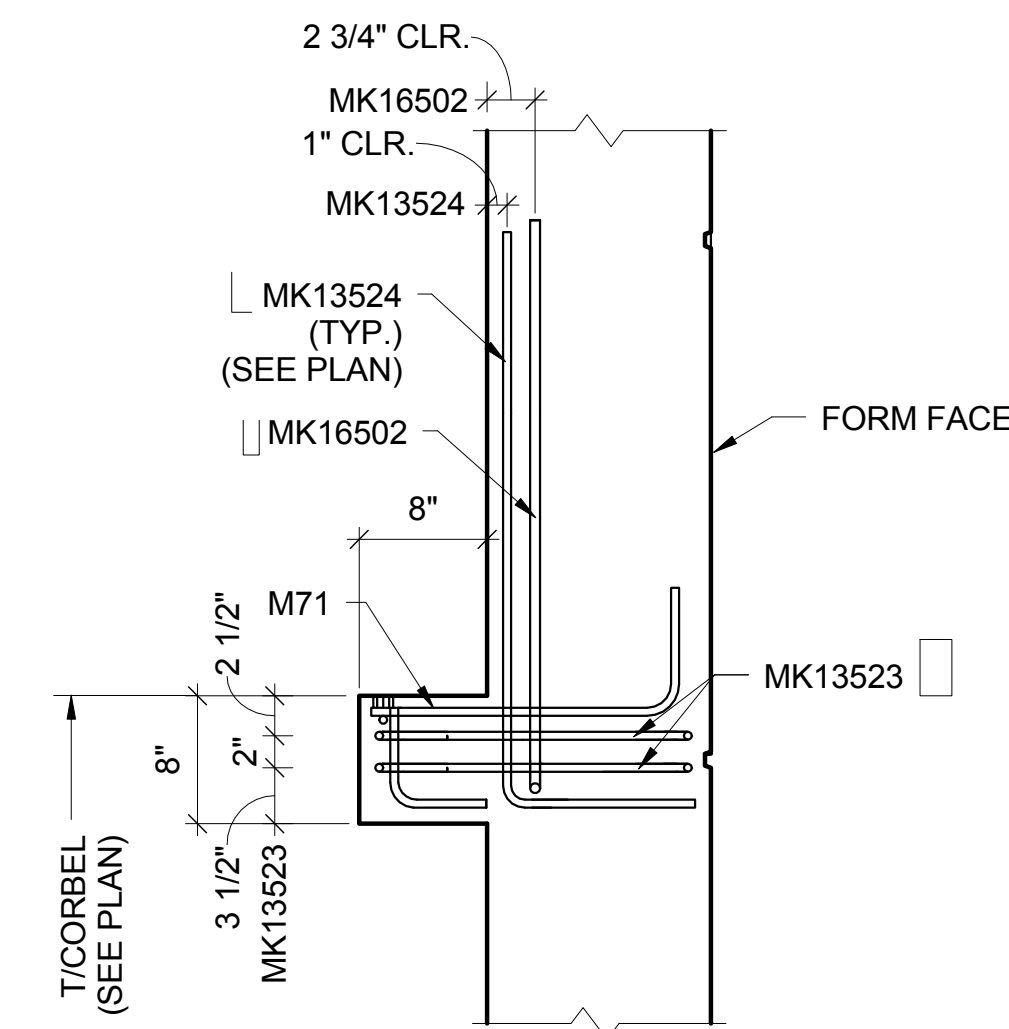
**269 SECTION**



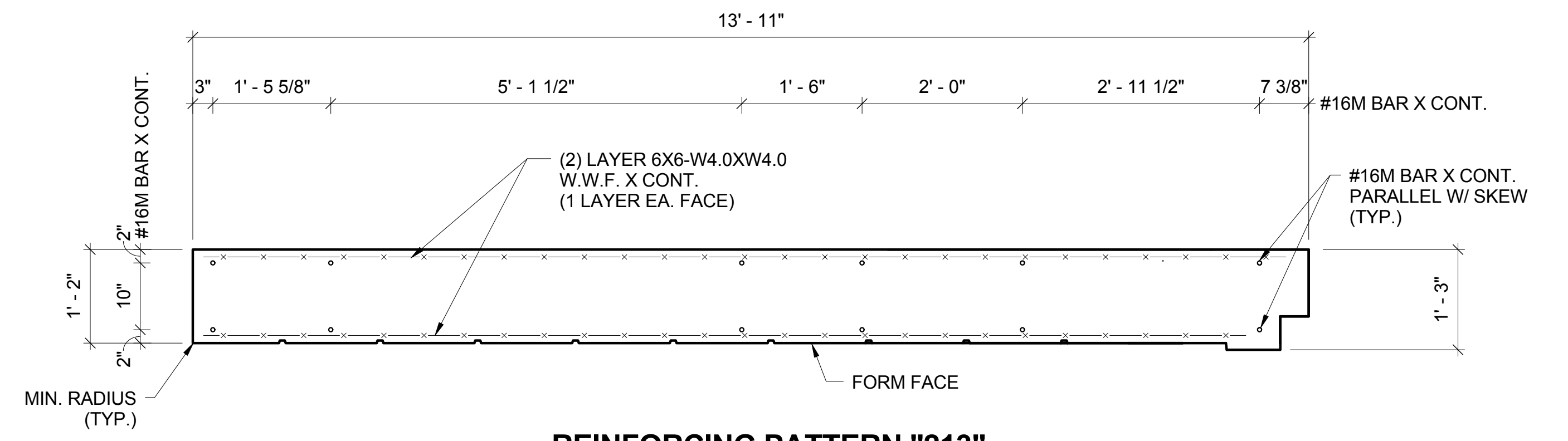
**268 SECTION**



**142 SECTION**

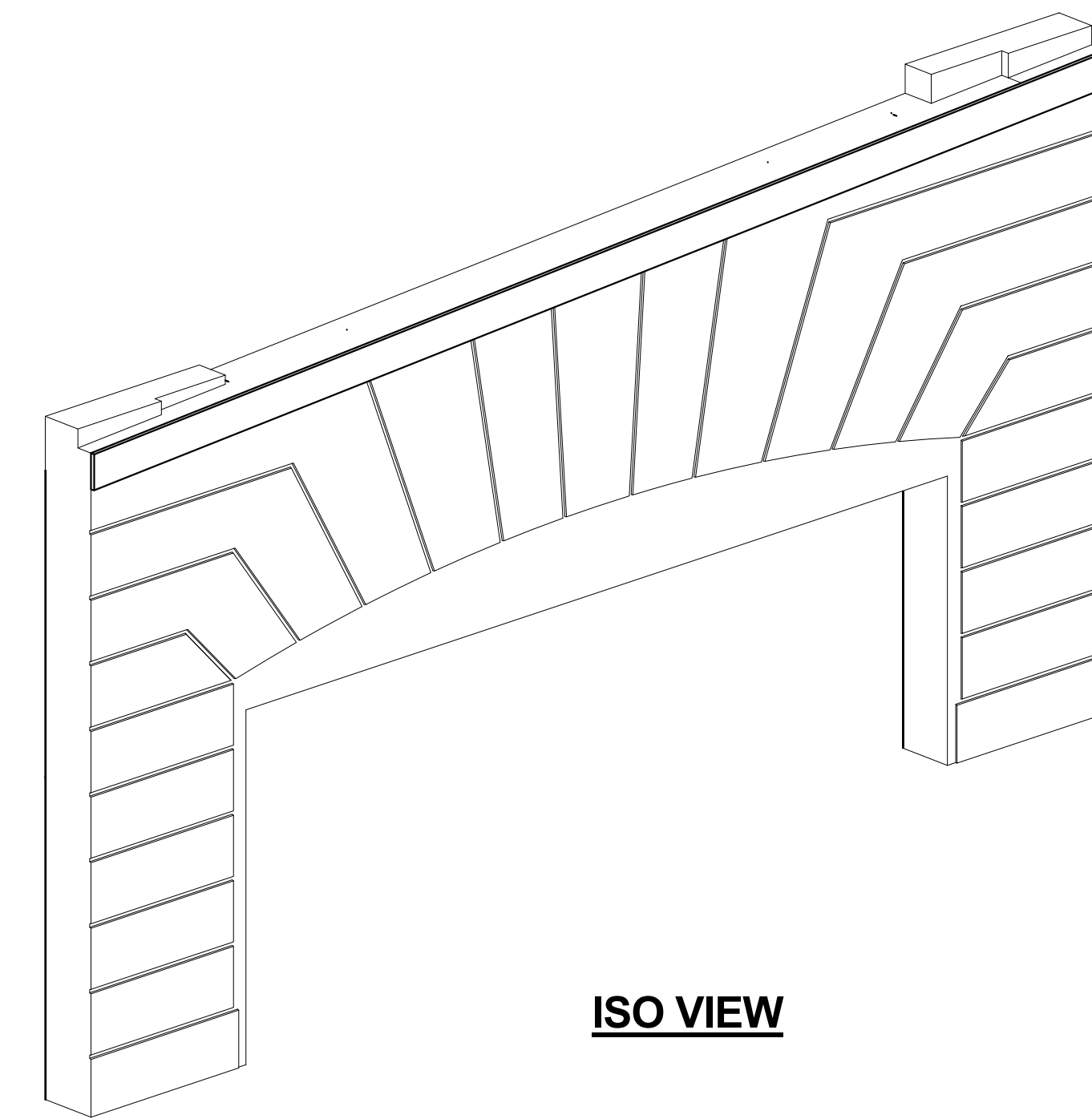


**142A SECTION**



**REINFORCING PATTERN "213"**

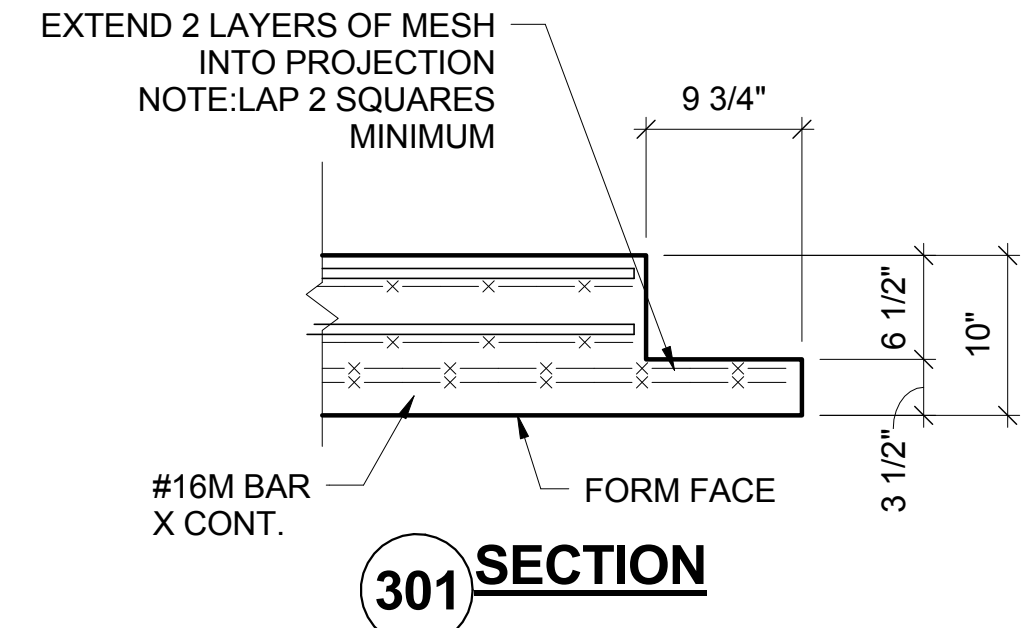
USE 60 KSI MILD REINFORCING  
 USE 6,000 PSI CONCRETE AT 28 DAYS MINIMUM  
 RELEASE AT 3,800 PSI CONCRETE MINIMUM  
 USE NORMAL WEIGHT 150 #C.F. MRA 4A LIGHT GREY ARCH. MIX  
 ALL REINFORCEMENT SHALL BE GRADE 420



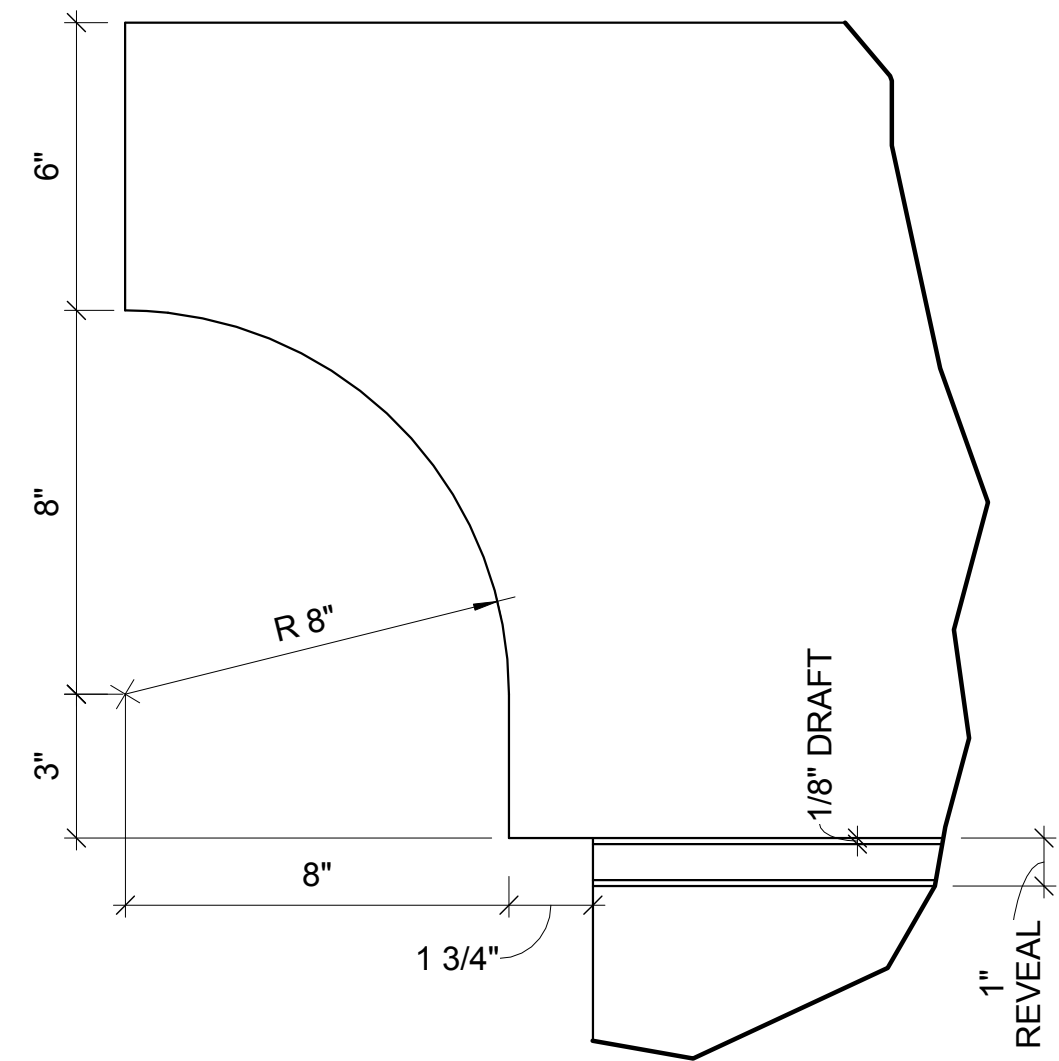
**ISO VIEW**

REQ'D	EMBED	DESCRIPTION	LENGTH
<b>MATERIAL LIST</b>			
<b>METROMONT</b>			
CONTROL NUMBERS			
611	616	622	649 655
LENGTH	WIDTH	ADD-ONS	WASH/BLAST OTHER
23' - 11 1/4"	13' - 11"	Yes	Yes No
REQ'D	WEIGHT	FACE YDS.	BACK YDS. FINISH SF. CODE
5	34,789	8.59	N/A 230.32 R
APPROVED FOR PRODUCTION			
DATE	BY	ISSUE	DESCRIPTION
10/16/15	JAG	1	
DWG. COVERS 14" HORIZONTAL SOLID WALL PANEL			
PROJECT JAMES MADISON UNIV.			
DRAWN BY: VAC	DATE: 10/07/15	JOB NUMBER	DRAWING NUMBER
CHK'D BY: JAG	DATE: 10/16/15	6084	WPA110 (SHT. 2 OF 2)

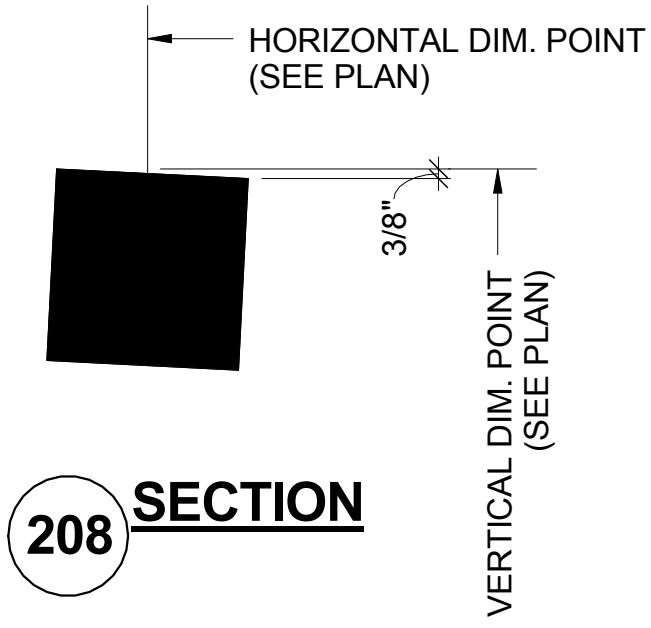




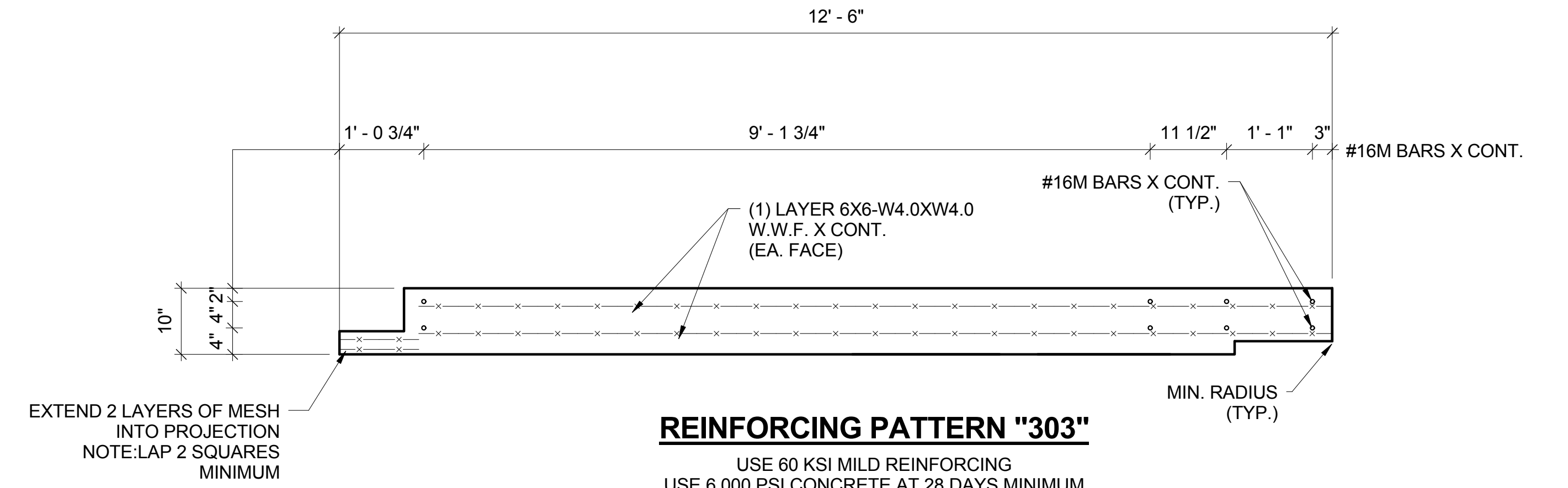
**301 SECTION**



**181 SECTION**

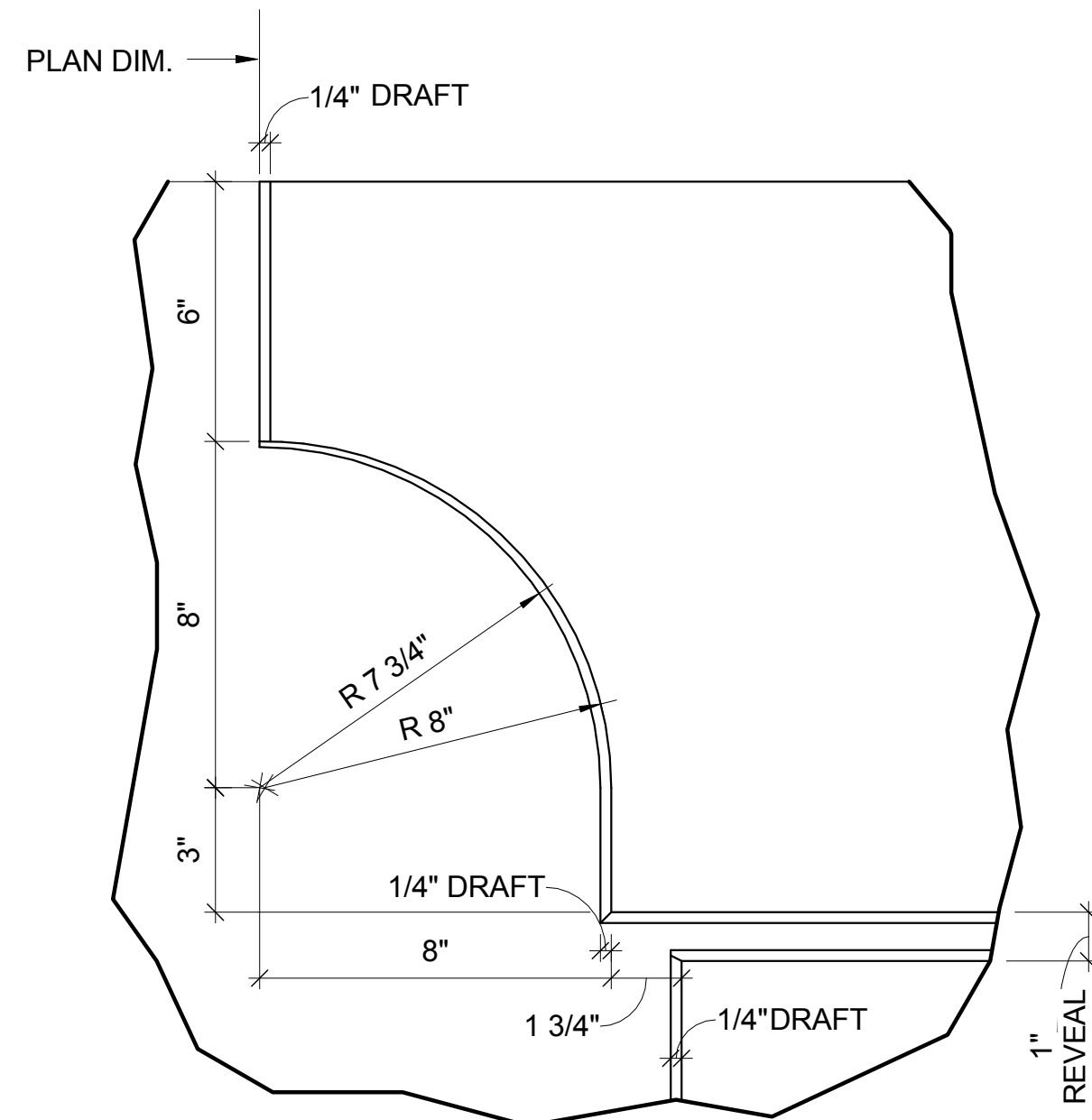


**208 SECTION**

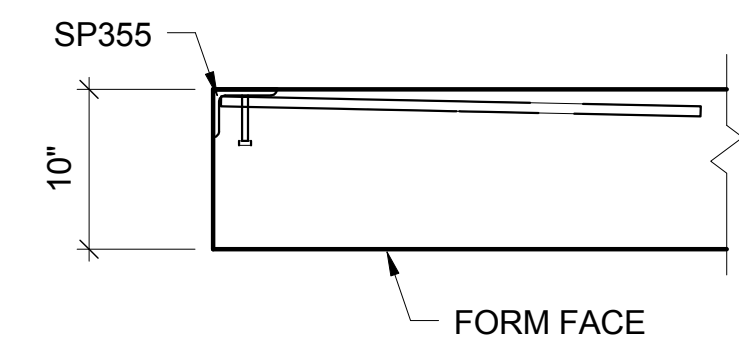


**REINFORCING PATTERN "303"**

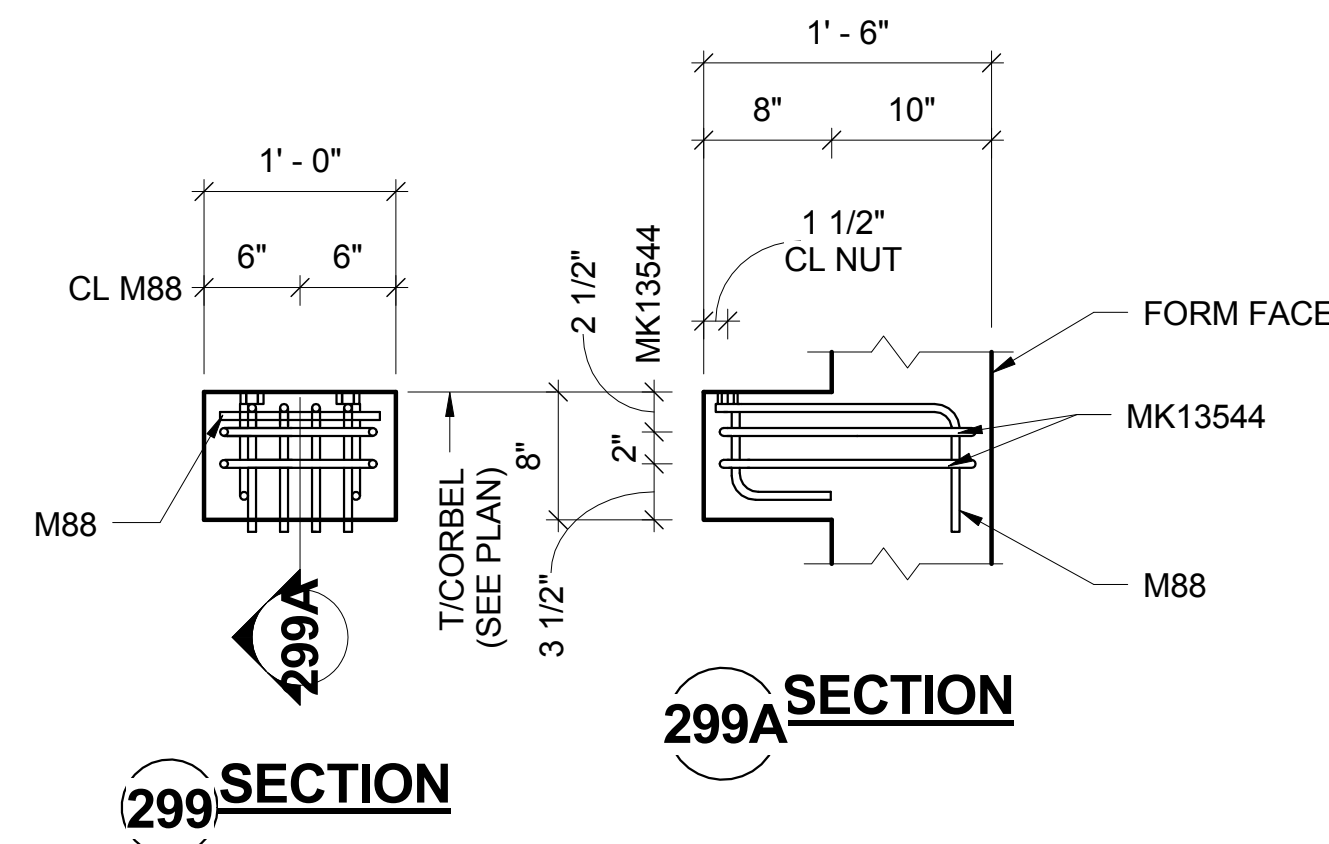
USE 60 KSI MILD REINFORCING  
 USE 6,000 PSI CONCRETE AT 28 DAYS MINIMUM  
 RELEASE AT 2,500 PSI CONCRETE MINIMUM  
 USE NORMAL WEIGHT 150 #C.F. MRA 11B "BUFF" ARCH. MIX  
 ALL REINFORCEMENT SHALL BE GRADE 420



**342 SECTION**

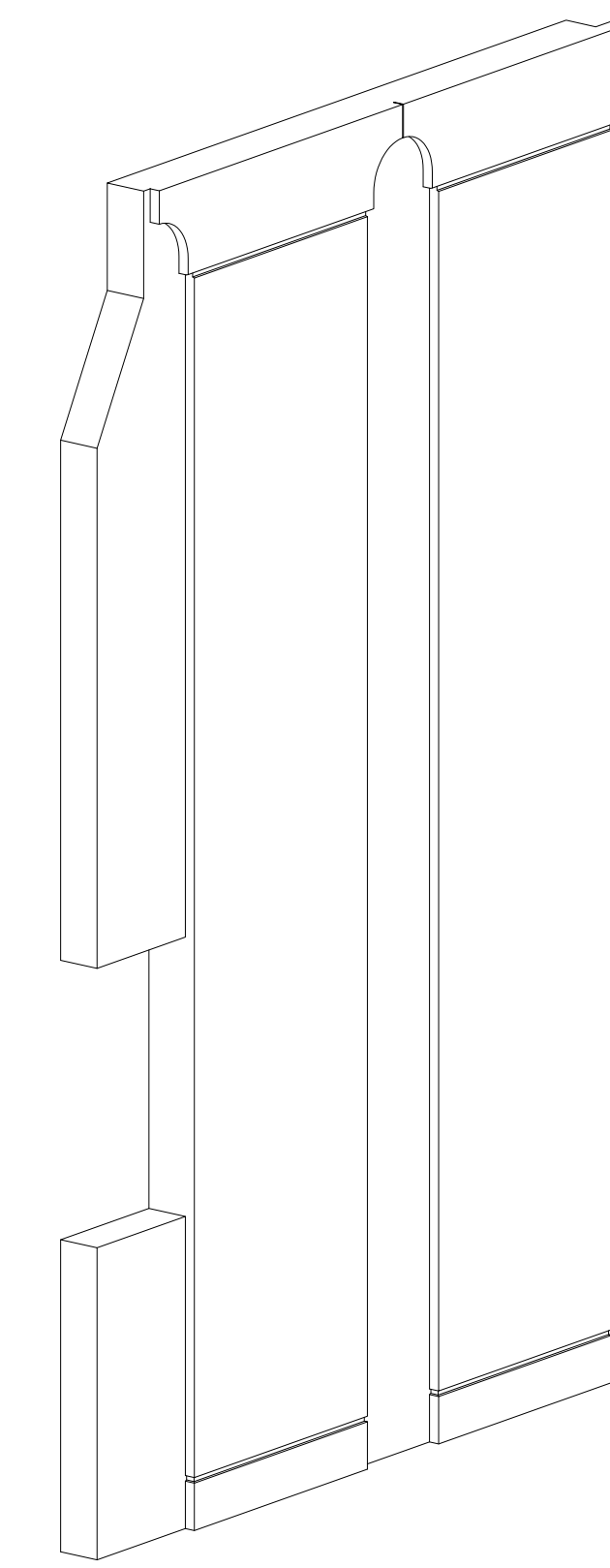


**300 SECTION**

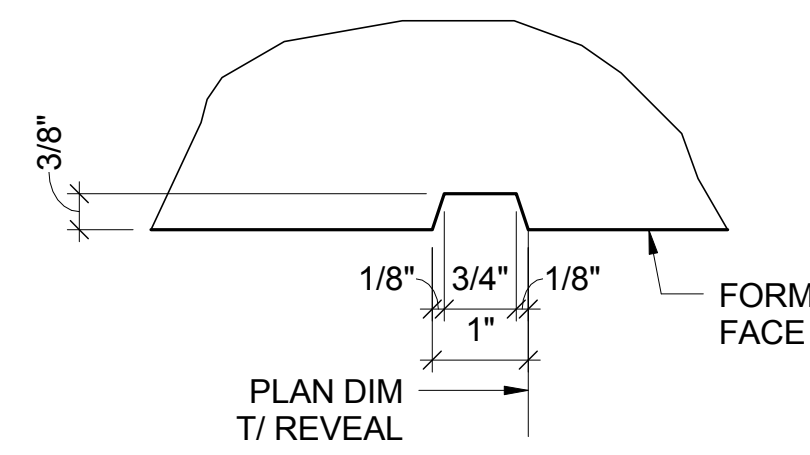


**299 SECTION**

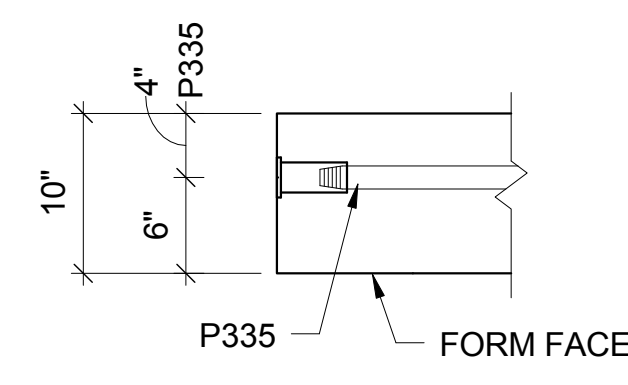
**299A SECTION**



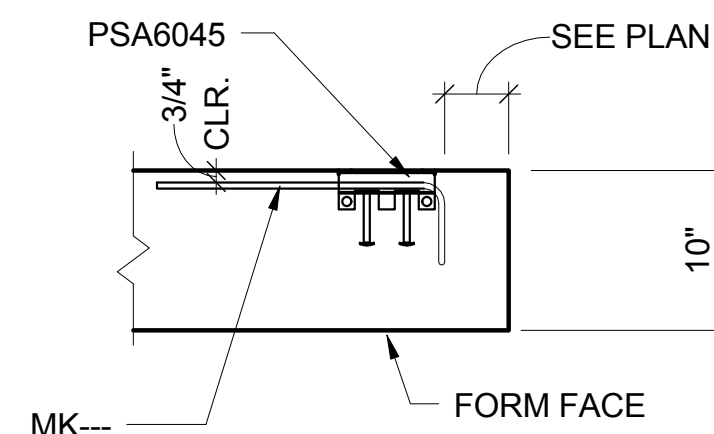
**ISO VIEW**



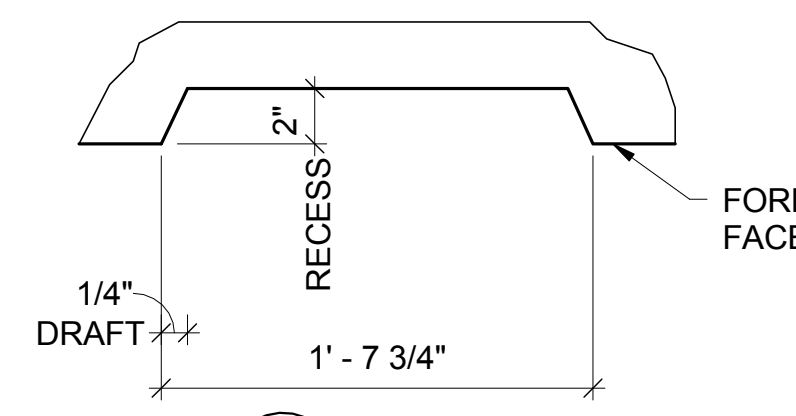
**2 SECTION**



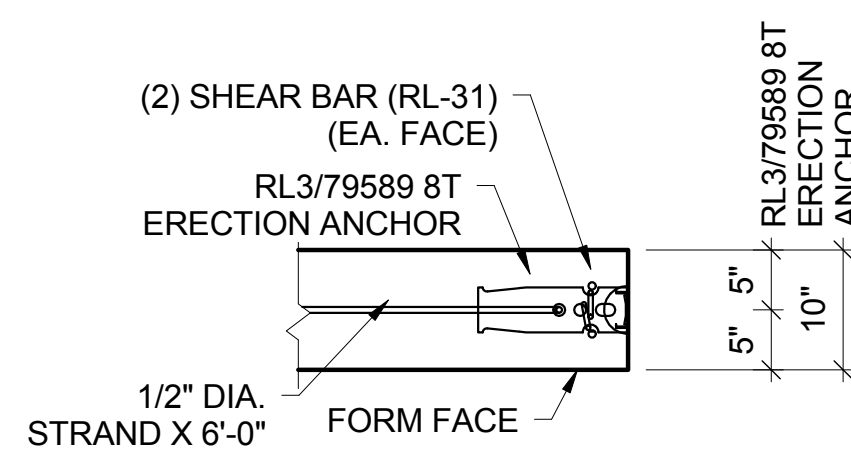
**165 SECTION**



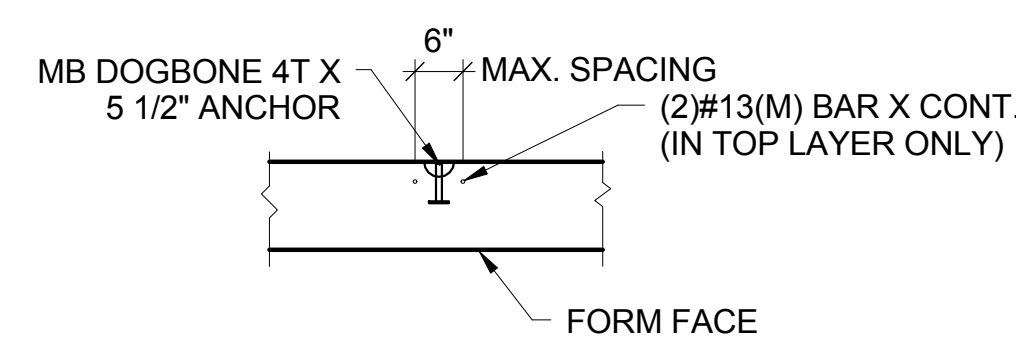
**284 SECTION**



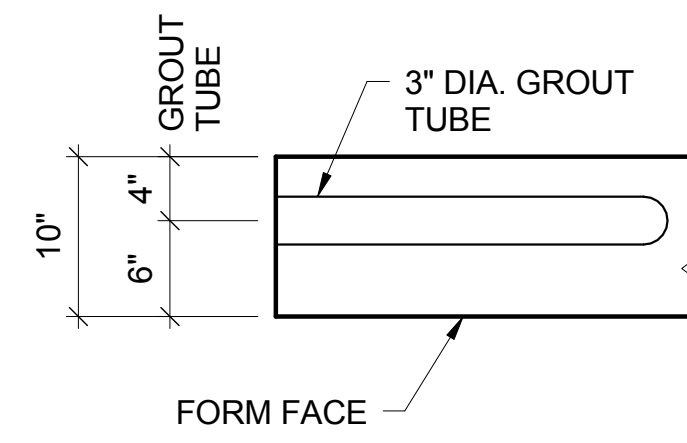
**302 SECTION**



**TYPICAL ERECTION ANCHOR**

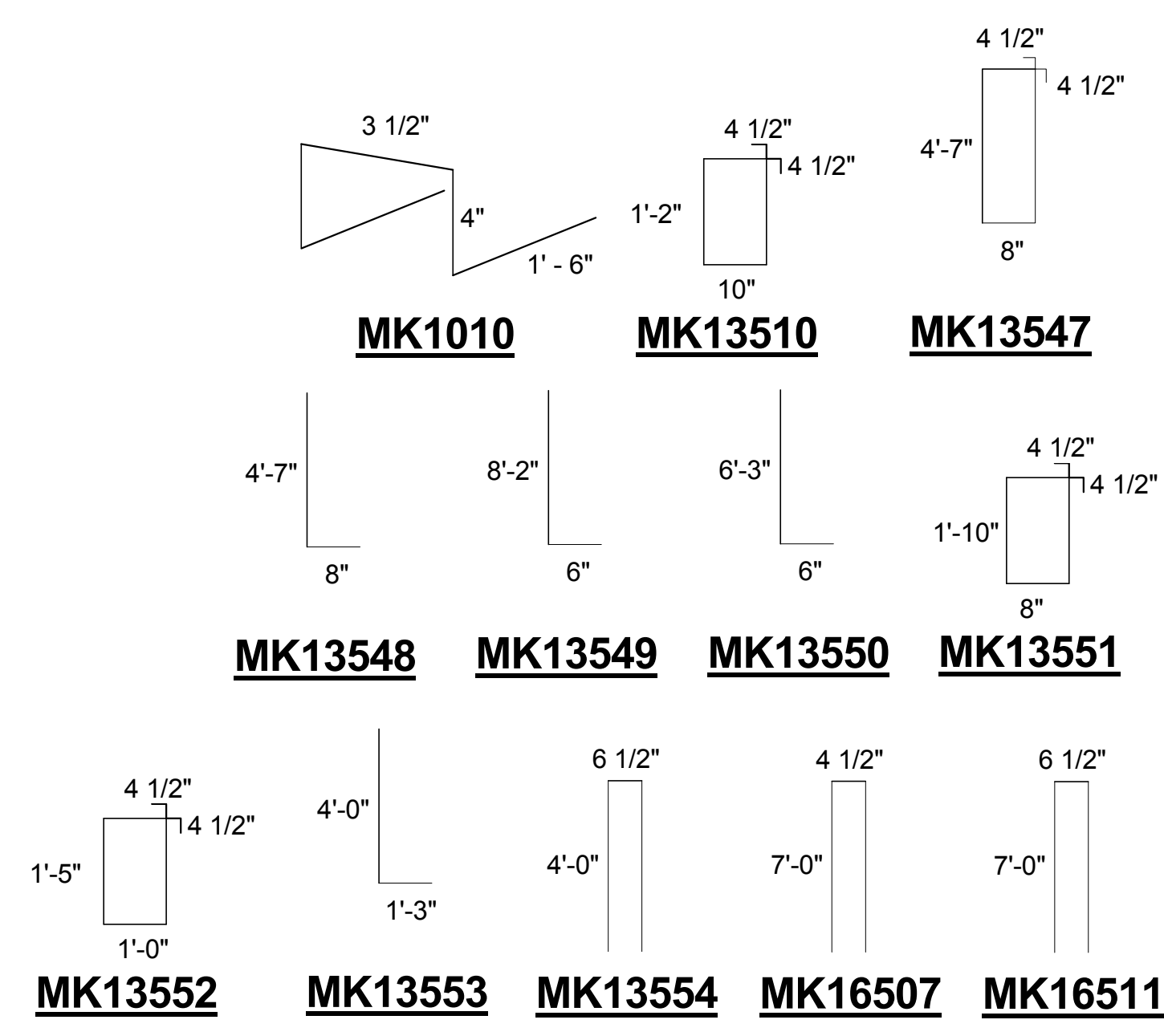
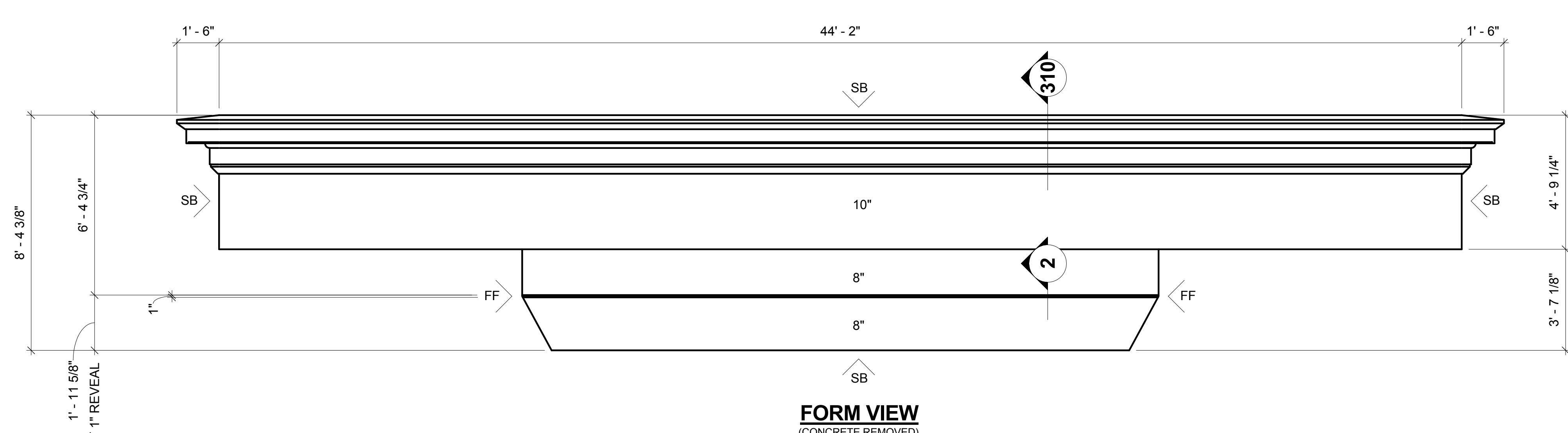
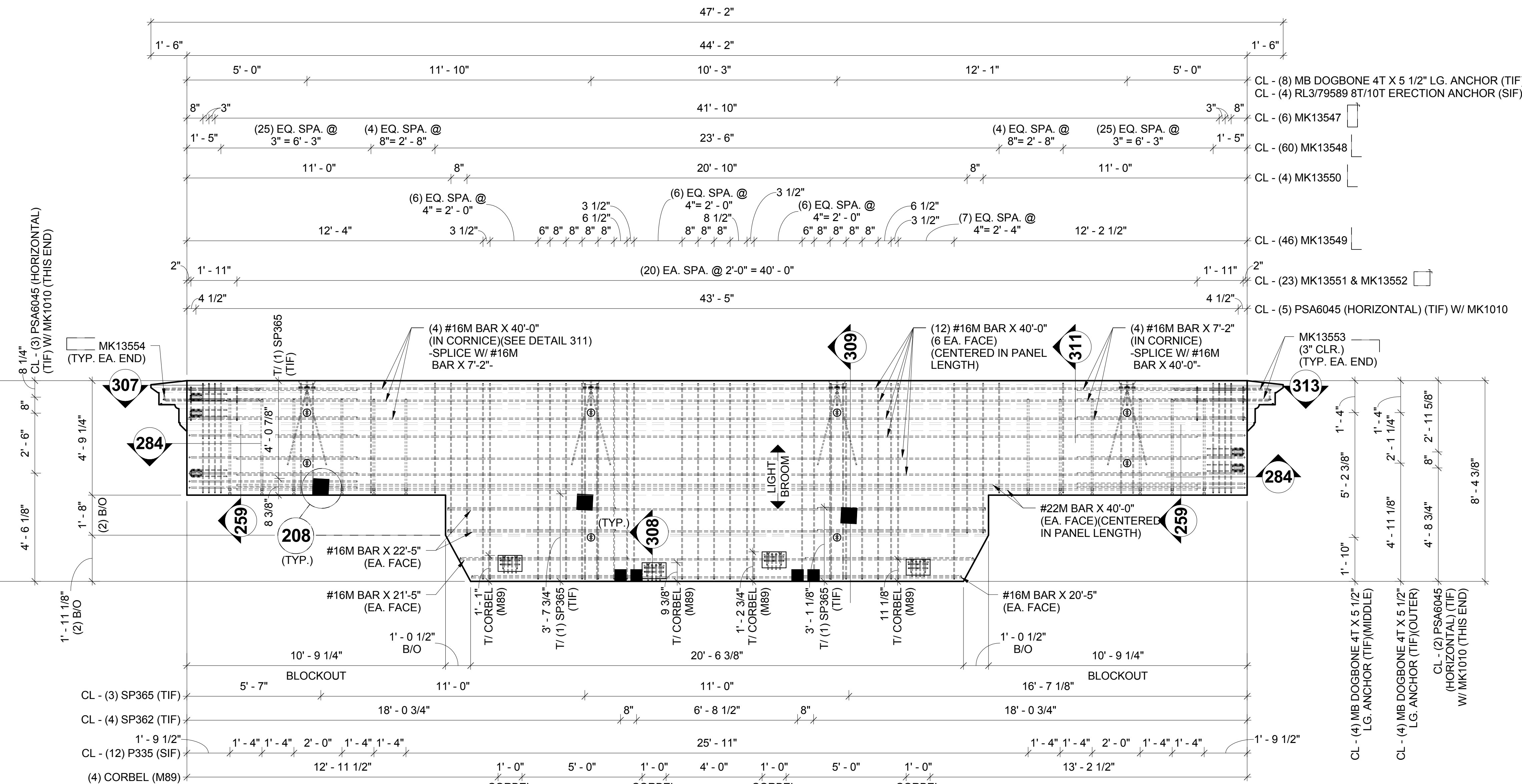


**TYPICAL STRIPPING INSERT**



**69 SECTION**

REQ'D	EMBED	DESCRIPTION	LENGTH
<b>MATERIAL LIST</b>			
CONTROL NUMBERS			
642			
LENGTH	WIDTH	ADD-ONS	WASH/BLAST
20' - 2 5/8"	12' - 6"	No	Yes
REQ'D	WEIGHT	FACE YDS.	BACK YDS.
1	26,897	6.64	N/A
		FINISH SF.	CODE
		224.97	R
APPROVED FOR PRODUCTION			
DATE	BY	ISSUE	DESCRIPTION
11/05/15	JAG	1	
DWG. COVERS 10" VERTICAL WALL PANEL			
PROJECT JAMES MADISON UNIV.			
DRAWN BY:	HAB	DATE:	10/27/15
JOB NUMBER	6084	DRAWING NUMBER	WPA121 (SHT. 2 OF 2)
CHK'D BY:	JAG	DATE:	11/05/15



REBAR SIZES SHOWN ARE METRIC			
3.8	WM-D	SHTS (D) 6 X 6 - W4.0 X W4.0 (8'-0" X 11'-10")	
4	RL3/79589	RL3/79589 X 12-1/2" 8T/10T TECH ERECTION ANCHOR ( GALVANIZED)	
8	RL-31	SHEAR BAR (79142)	
4	SL	1/2" DIA X 6'-0" STRAND LOOP	
12	P335	#22M X 3'-9 3/4" BAR W/ LENTON TAPERED THREAD ONE END & ERICO EL22SA FORMSAVER	4' - 0"
4	SP362	PL 1/4" X 6" X 0'-6" W/ (4) 3/8" DIA X 4 1/8" HCA (STAINLESS)	
3	SP365	PL 3/8" X 8" X 0'-8" W/ (4) 5/8" DIA X 4 1/8" HCA (STAINLESS)	
4	M89	REBAR HAUNCH ASSEMBLY W/ (4) #13M BARS	1' - 0 3/4"
5	PSA6045	SLOTTED INSERT (J-FINISH)	
8	MB DB-52 4T	MEADOW BURKE 5 1/2" X 4 TON DOG BONE	
5	MK1010	#10M BENT BAR (26A) X LENGTH SCHEDULED	3' - 11 1/2"
8	MK13510	#13M BENT BAR (T2) X LENGTH SCHEDULED	4' - 9"
6	MK13547	#13M BENT BAR (T2) X LENGTH SCHEDULED	11' - 3"
60	MK13548	#13M BENT BAR (17A)	5' - 3"
46	MK13549	#13M BENT BAR (17A)	8' - 8"
4	MK13550	#13M BENT BAR (17A)	6' - 9"
23	MK13551	#13M BENT BAR (T2) X LENGTH SCHEDULED	5' - 9"
23	MK13552	#13M BENT BAR (T2) X LENGTH SCHEDULED	5' - 7"
4	MK13553	#13M BENT BAR (17A)	5' - 3"
2	MK13554	#13M BENT BAR (17)	8' - 6 1/2"
8	MK16507	#16M BENT BAR (17)	14' - 4 1/2"
16	MK16511	#16M BENT BAR (17)	14' - 6 1/2"
4	S13M	#13M STRAIGHT BAR	4' - 7"
4	S13M	#13M STRAIGHT BAR	8' - 2"
4	S16M	#16M STRAIGHT BAR	7' - 2"
2	S16M	#16M STRAIGHT BAR	20' - 5"
2	S16M	#16M STRAIGHT BAR	21' - 5"
4	S16M	#16M STRAIGHT BAR	22' - 5"
16	S16M	#16M STRAIGHT BAR	40' - 0"
4	S22M	#22M STRAIGHT BAR	40' - 0"

REQ'D	EMBED	DESCRIPTION	LENGTH
-------	-------	-------------	--------

MATERIAL LIST					
METROMONT					
CONTROL NUMBERS					

LENGTH	WIDTH	ADD-ONS	WASH/BLAST	OTHER	
47' - 2"	8' - 4 3/8"	No	Yes	No	
REQ'D	WEIGHT	FACE YDS.	BACK YDS.	FINISH SF.	CODE
1	45.327	11.19	N/A	396	R

**SHOP NOTE:**  
SEE SHEET 2 FOR SECTIONS & DETAILS

**FINISH NOTE:**  
FF = FORM FINISH  
SB = MODERATE SANDBLAST

**PRODUCTION FINISH**

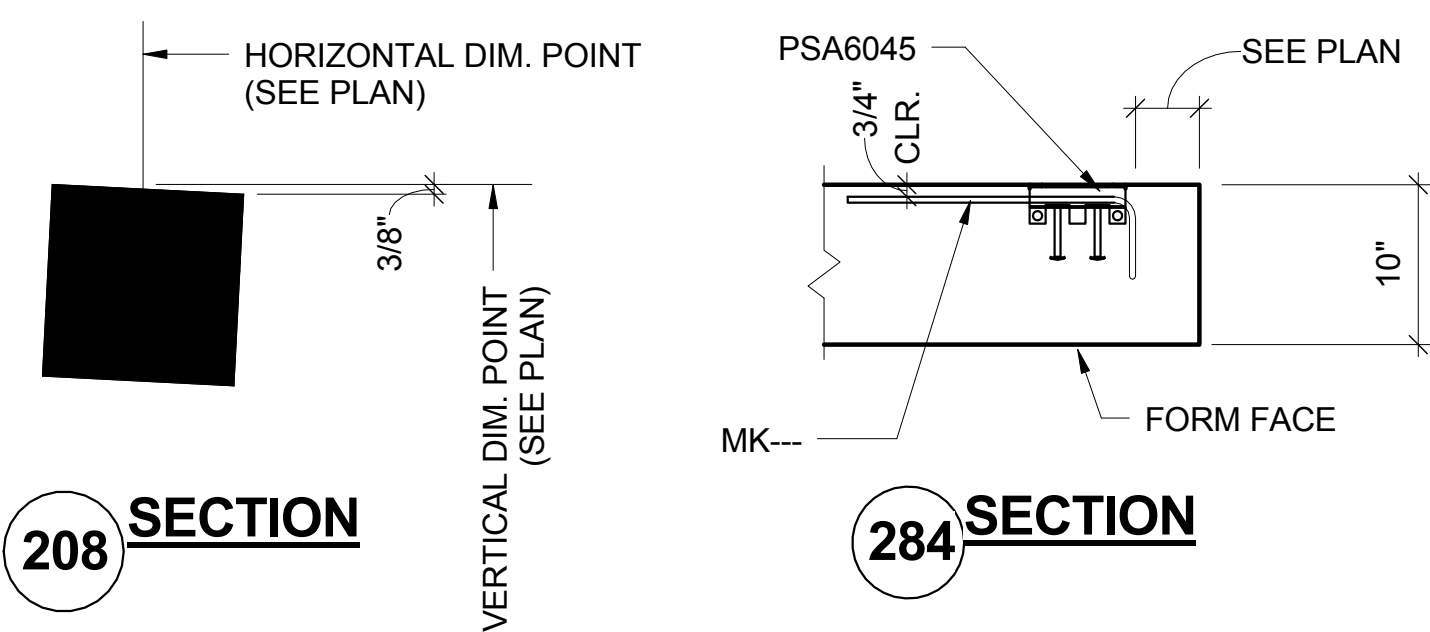
TOP SIDE..... LIGHT BROOM  
ENDS..... SEE PLAN  
SIDES..... SEE PLAN  
FORM SIDE..... MODERATE SANDBLAST

BLOCK AT STRIPPING POINTS FOR STORAGE & SHIPPING

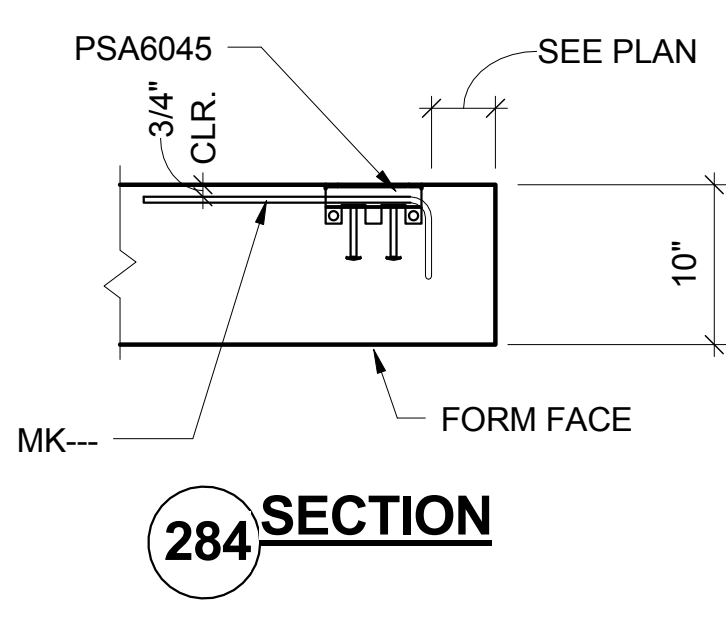
11/2/15 JAG 1 APPROVED FOR PRODUCTION  
DATE BY ISSUE DESCRIPTION

DWG. COVERS 8" / 10" SOLID SPANDREL  
PROJECT JAMES MADISON UNIV.

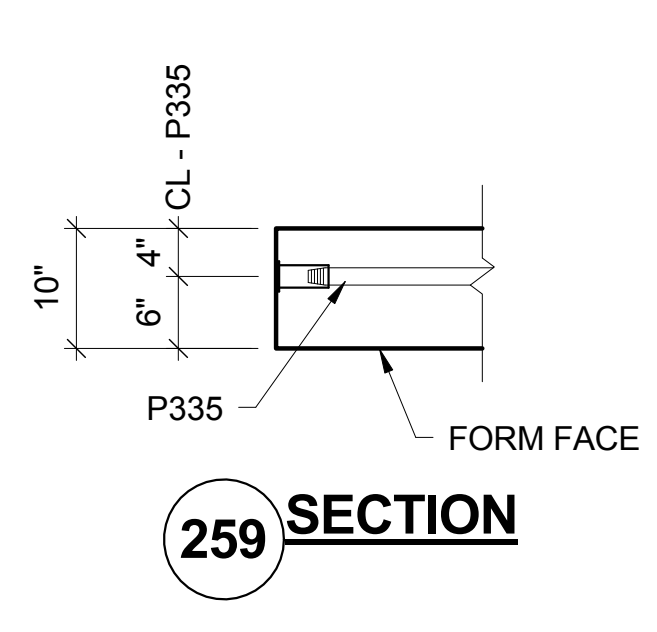
DRAWN BY: WVV	DATE: 10/29/15	JOB NUMBER: 6084	DRAWING NUMBER: SPA12 (1 OF 2)
CHK'D BY: JAG	DATE: 11/2/15		



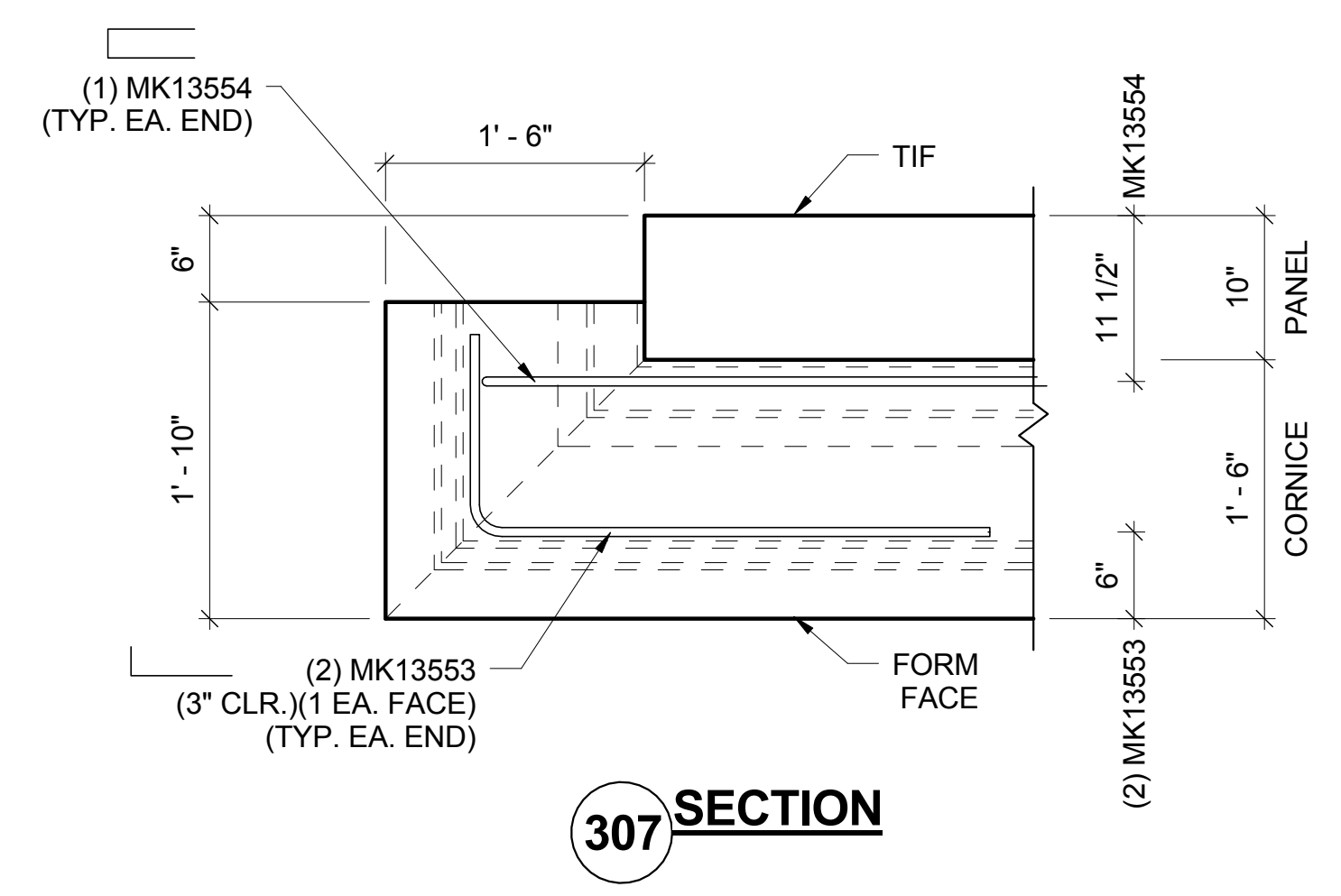
**208 SECTION**



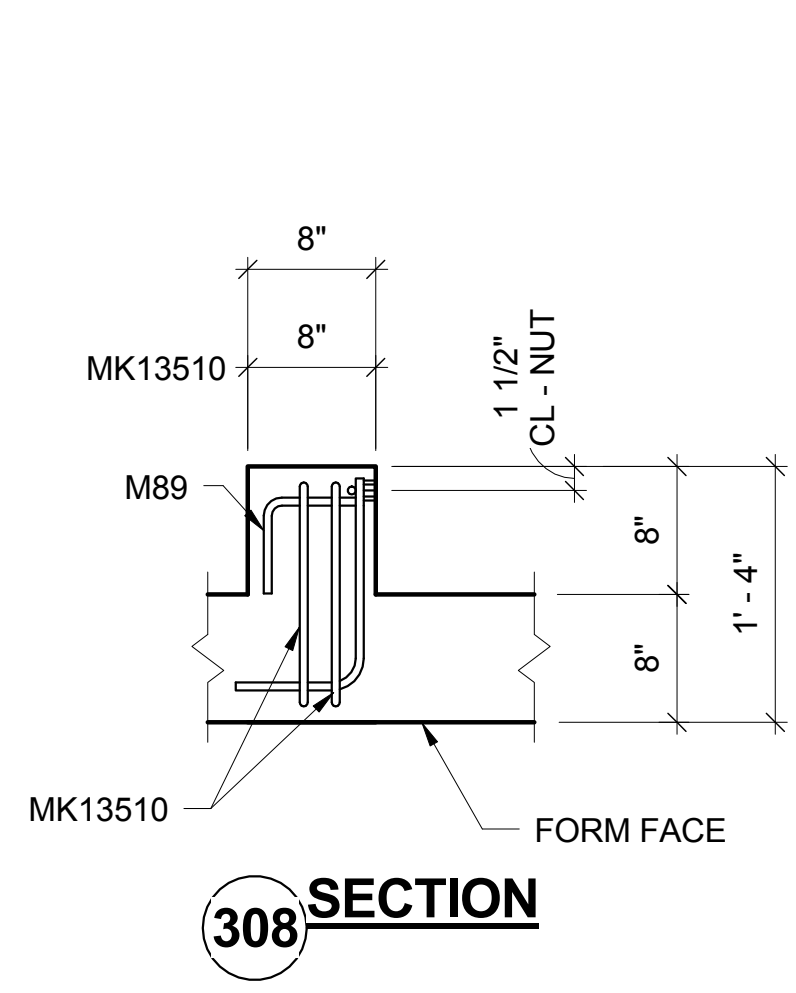
**284 SECTION**



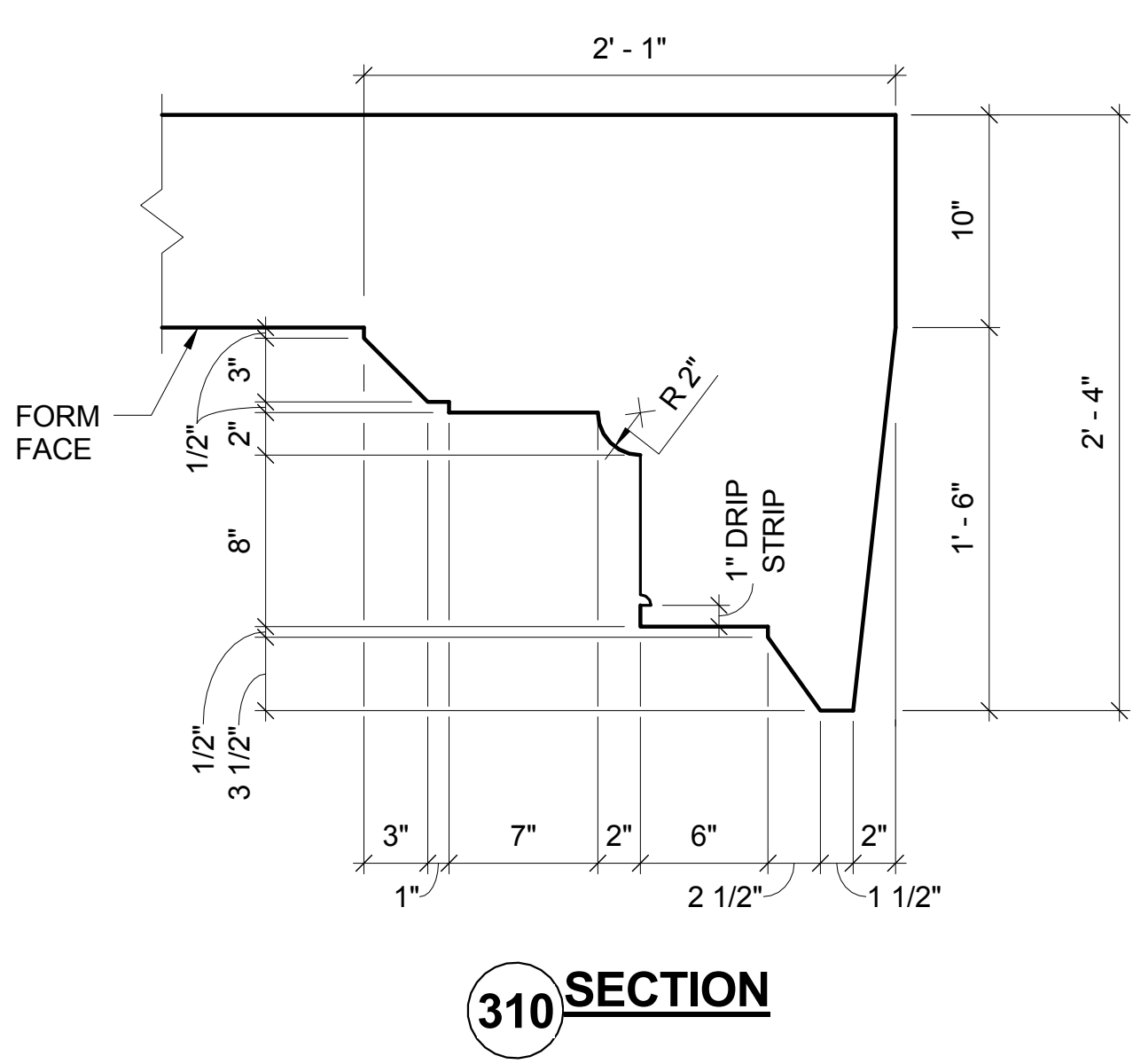
**259 SECTION**



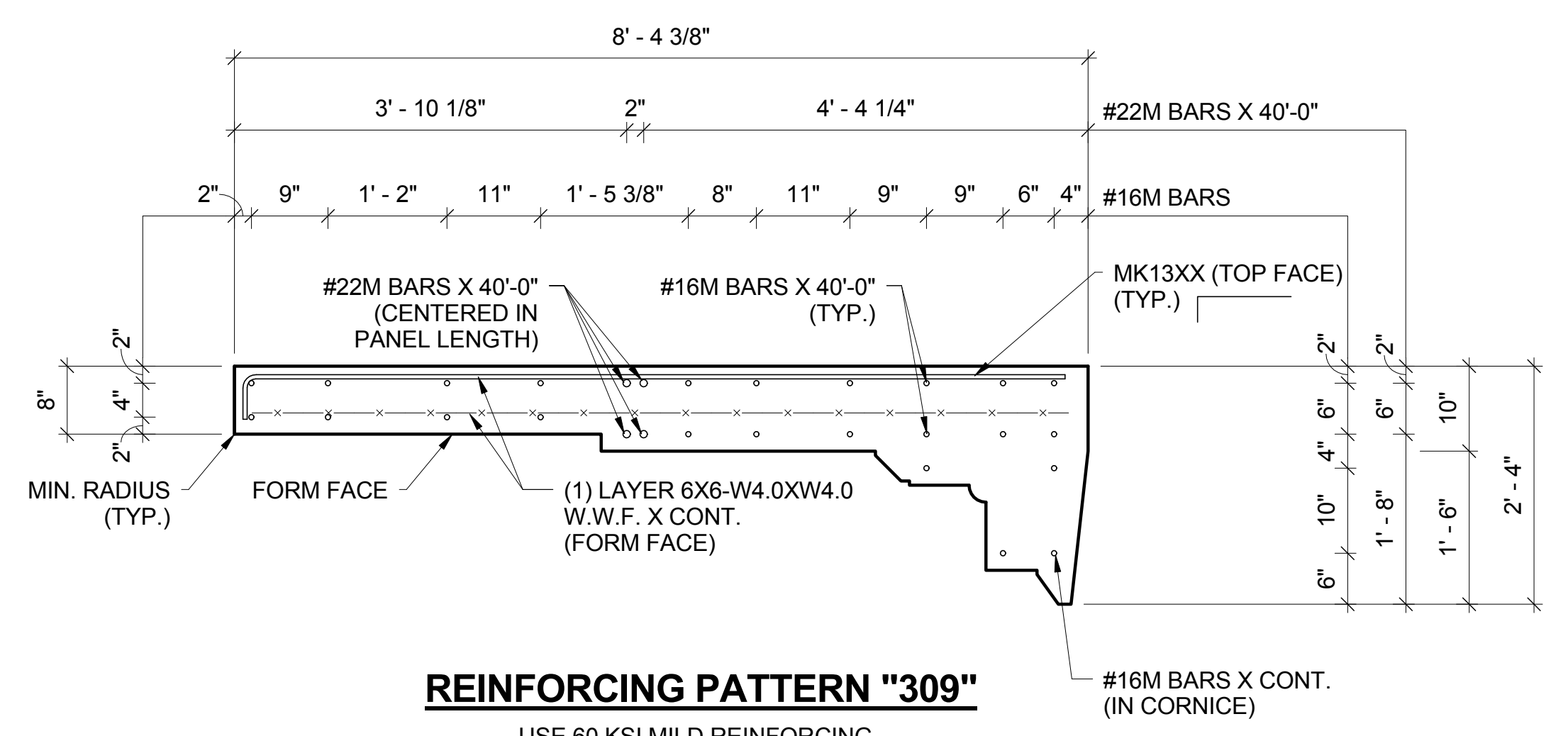
**307 SECTION**



**308 SECTION**

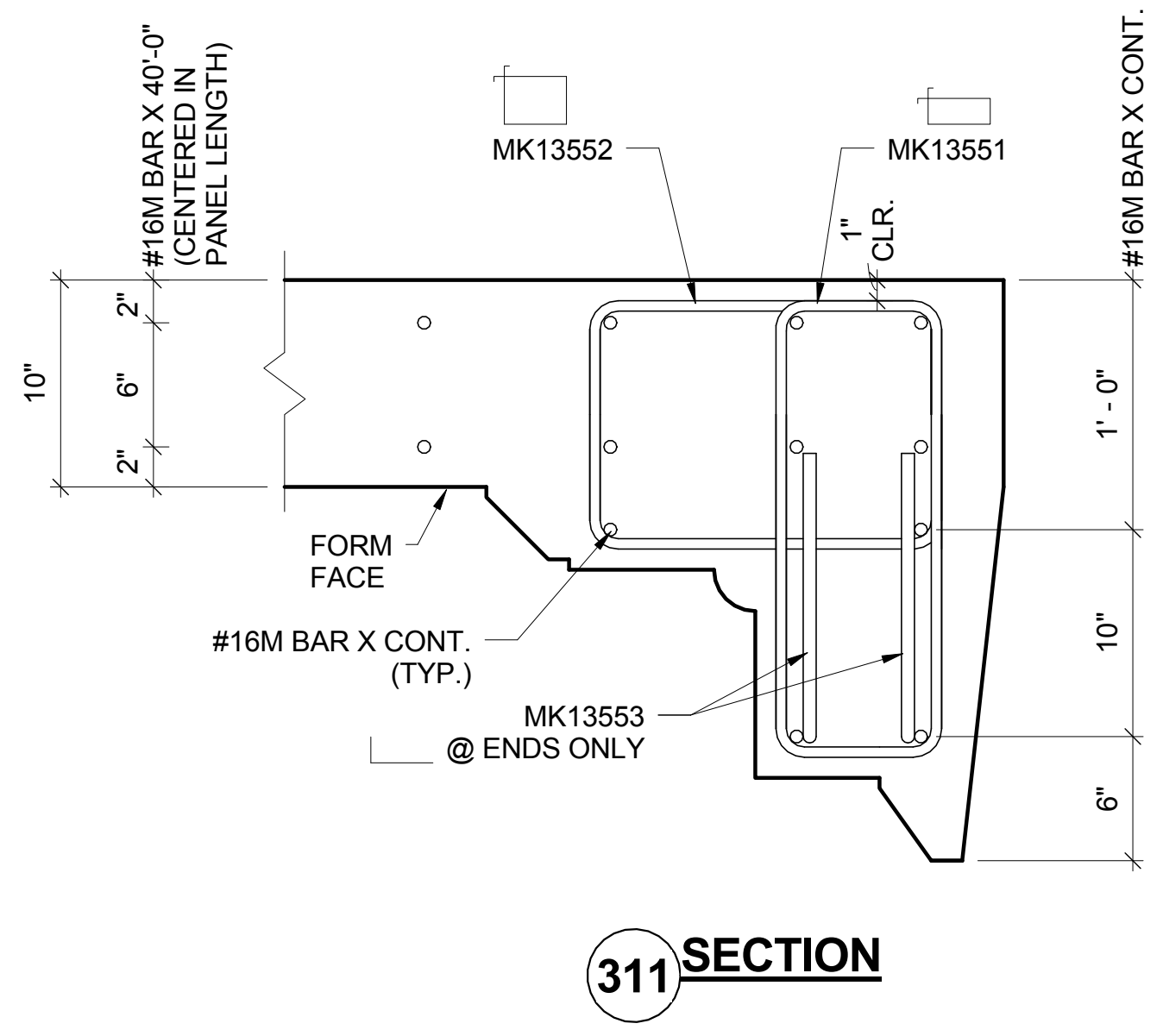


**310 SECTION**

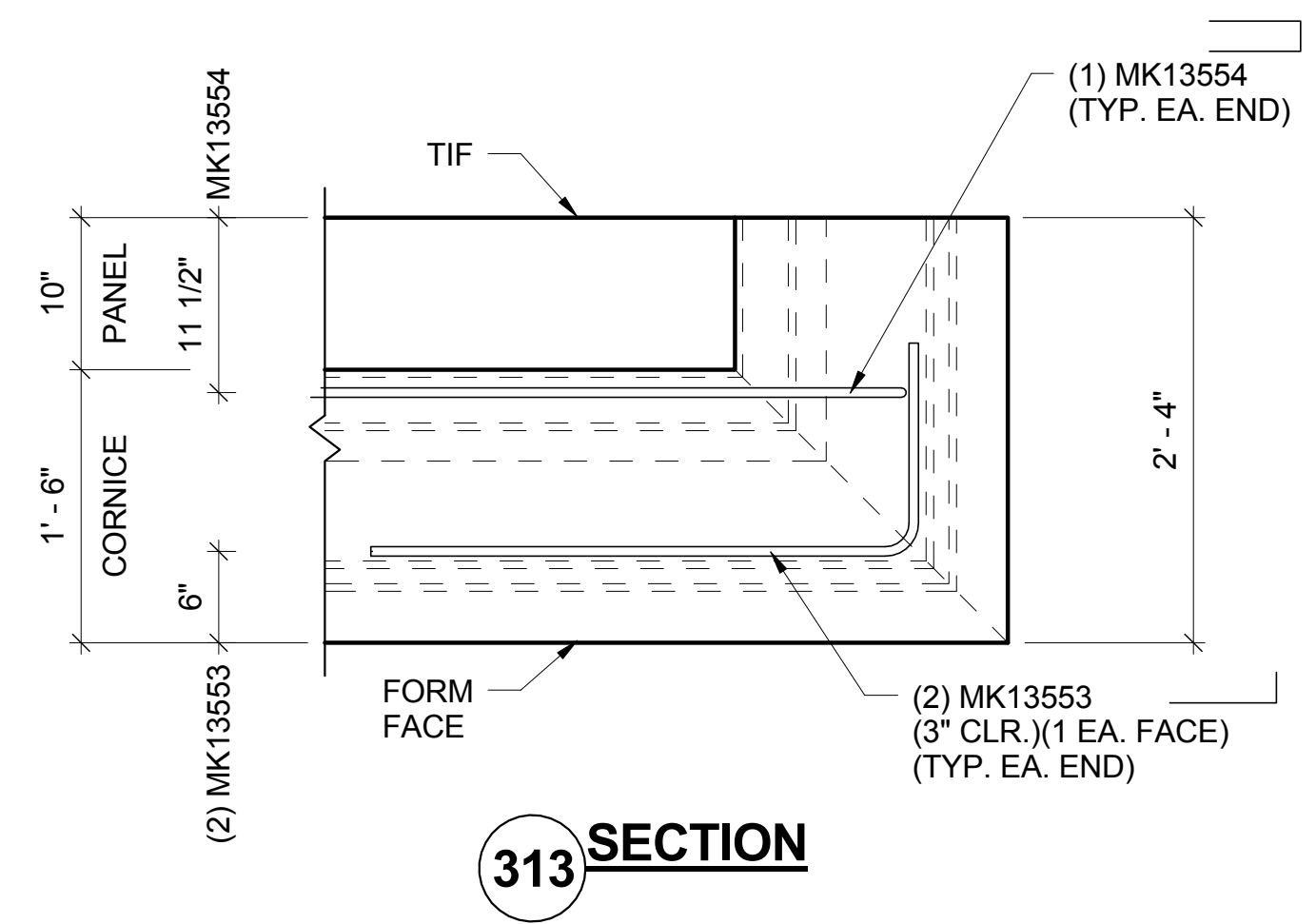


**REINFORCING PATTERN "309"**

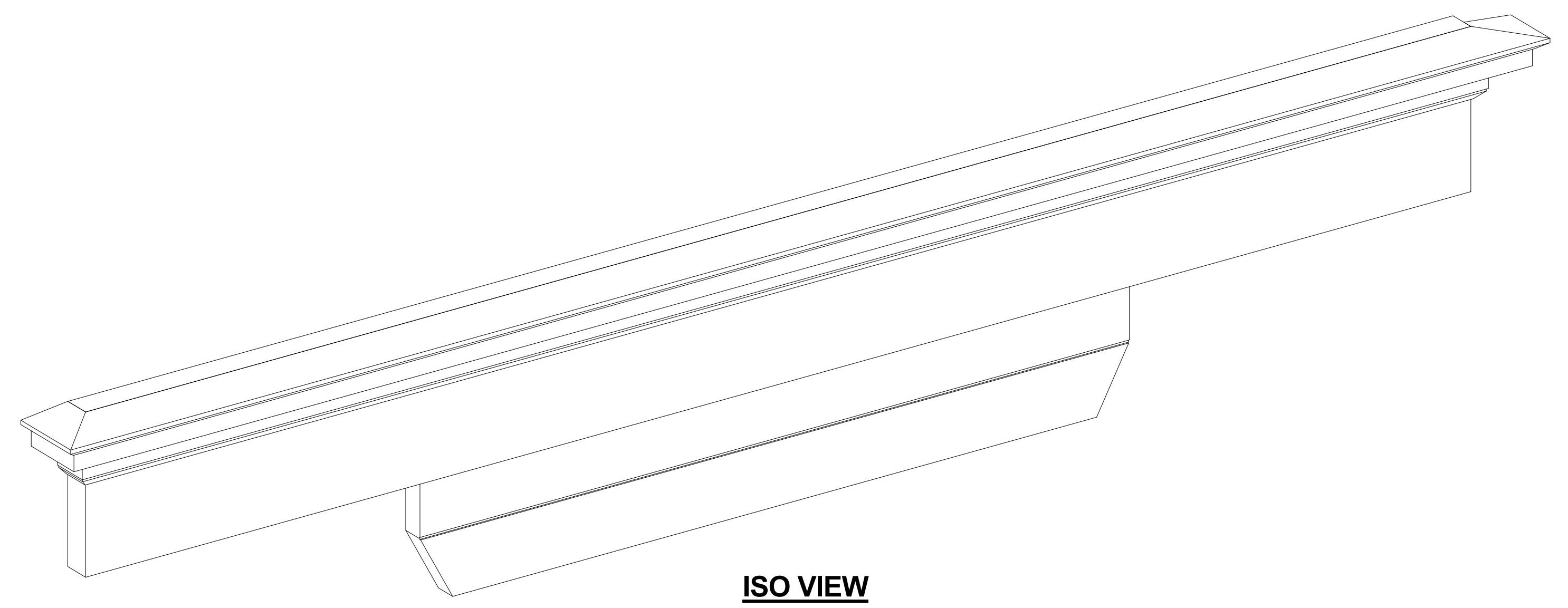
USE 60 KSI MILD REINFORCING  
 USE 5,500 PSI CONCRETE AT 28 DAYS MINIMUM  
 RELEASE AT 2,500 PSI CONCRETE MINIMUM  
 USE NORMAL WEIGHT 150 #C.F. MRA 11B "BUFF" ARCH. MIX CONCRETE  
 ALL REINFORCEMENT SHALL BE GRADE 420



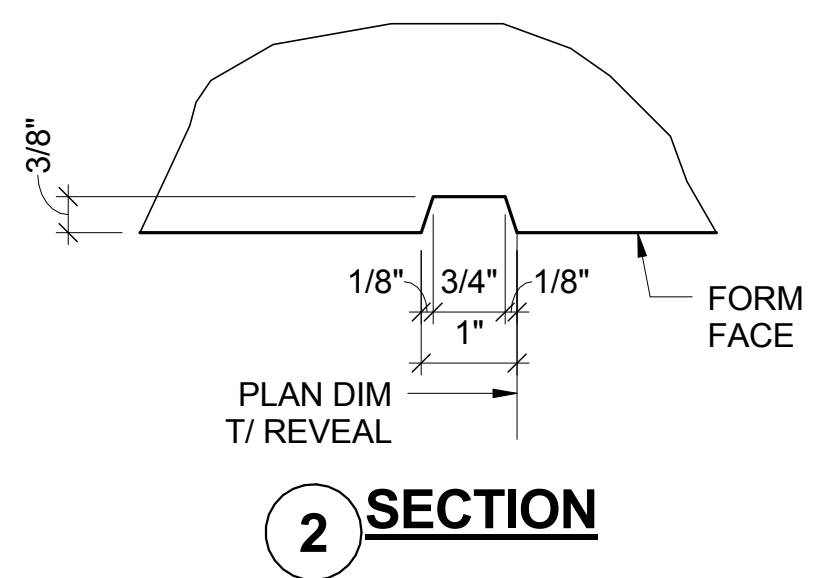
**311 SECTION**



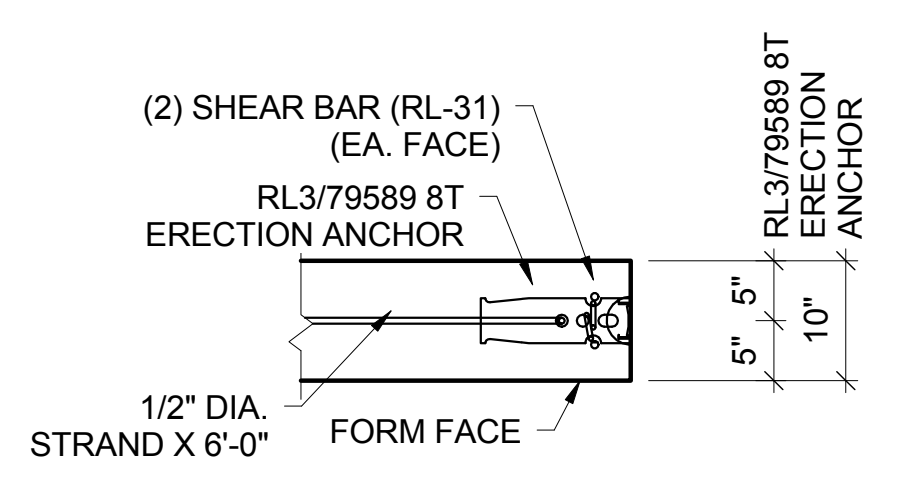
**313 SECTION**



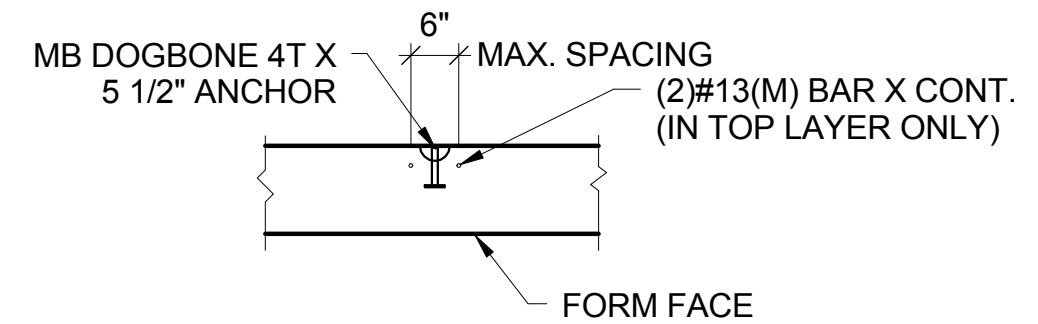
**ISO VIEW**



**2 SECTION**



**TYPICAL ERECTION ANCHOR**



**TYPICAL STRIPPING INSERT**

METROMONT						
CONTROL NUMBERS						
640						
LENGTH	WIDTH	ADD-ONS	WASH/BLAST	OTHER		
47' - 2"	8' - 4 3/8"	No	Yes	No		
REQ'D	WEIGHT	FACE YDS.	BACK YDS.	FINISH SF.	CODE	
1	45,327	11.19	N/A	396	R	
11/2/15	JAG	1	APPROVED FOR PRODUCTION			
DATE	BY	ISSUE	DESCRIPTION			
DWG. COVERS 8" / 10" SOLID SPANDREL						
PROJECT JAMES MADISON UNIV.						
DRAWN BY: WW	DATE: 10/29/15	JOB NUMBER	DRAWING NUMBER			
CHK'D BY: JAG	DATE: 11/2/15	6084	SPA12 (2 OF 2)			

1/2/2015 5:04:08 PM D:\\_Revit2015\Projects\James Madison Univ PG\_wright.rvt